

OCTOBER  
**2016**

Presidential Election

# Chartbook

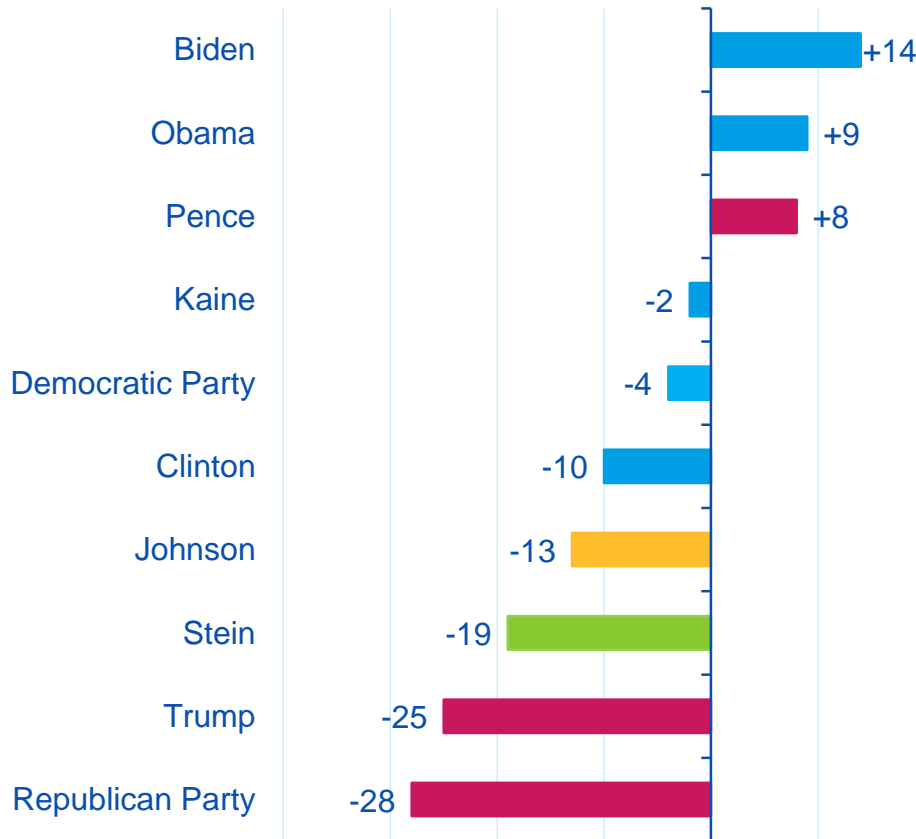
## Bottom Line

- Clinton increases lead in post-debate polls, including key swing states such as Florida, Colorado, Pennsylvania and Ohio
- Low number of undecided voters and disparate views on the candidates underlie growing polarization
- Our state-level vote-share model still projects a Democrat victory in Electoral College despite national estimates implying a tighter race
- Congress likely to be divided according to current projections
- Post-election zeitgeist unlikely to be conducive to major reforms and cooperation

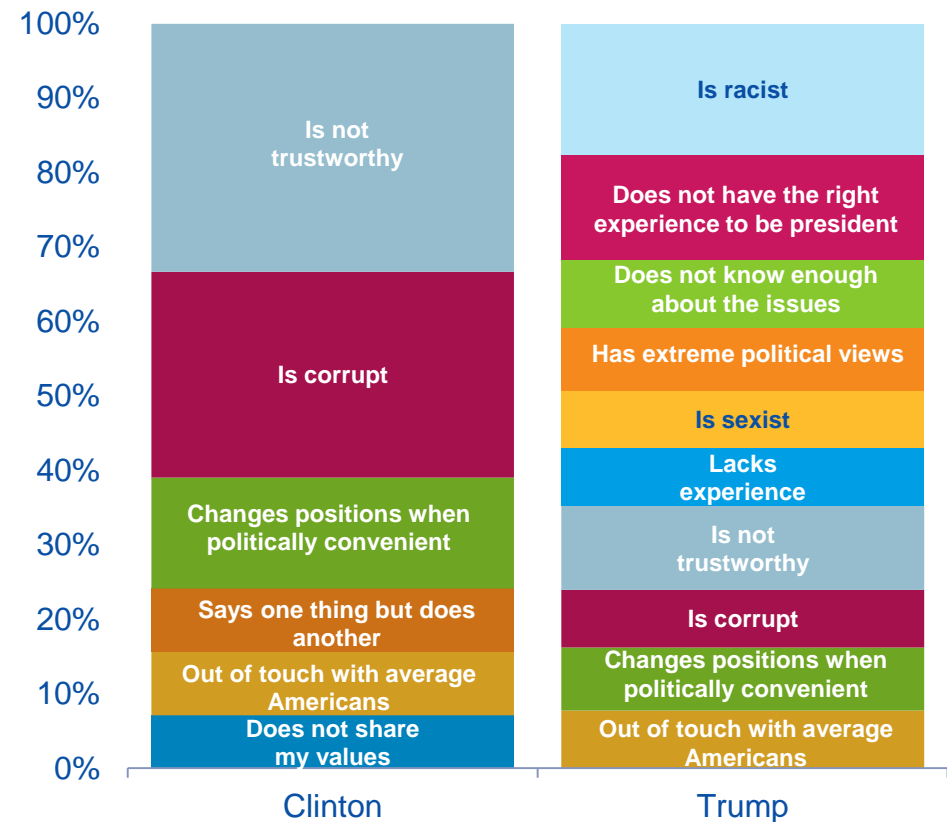
# Candidate perceptions

Voter doubts about candidates' personalities and qualifications have resulted in two highly unpopular candidates

Net Favorability, %



Why Voters Dislike the Candidates, %

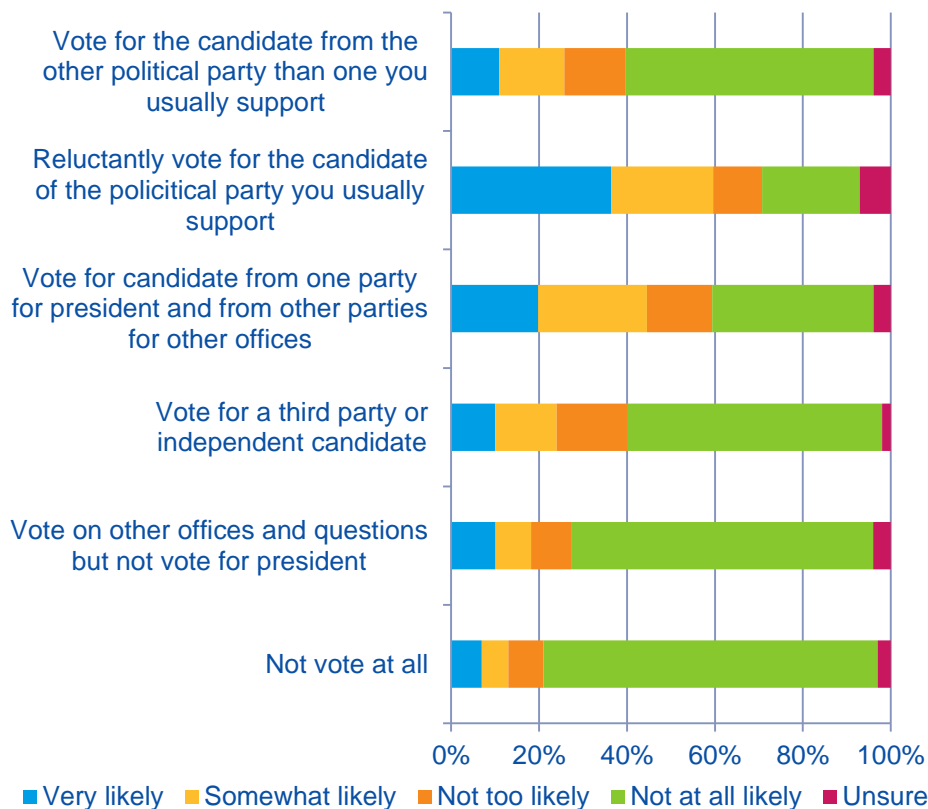


Sources: BBVA Research, HuffPost Pollster & Morning Consult

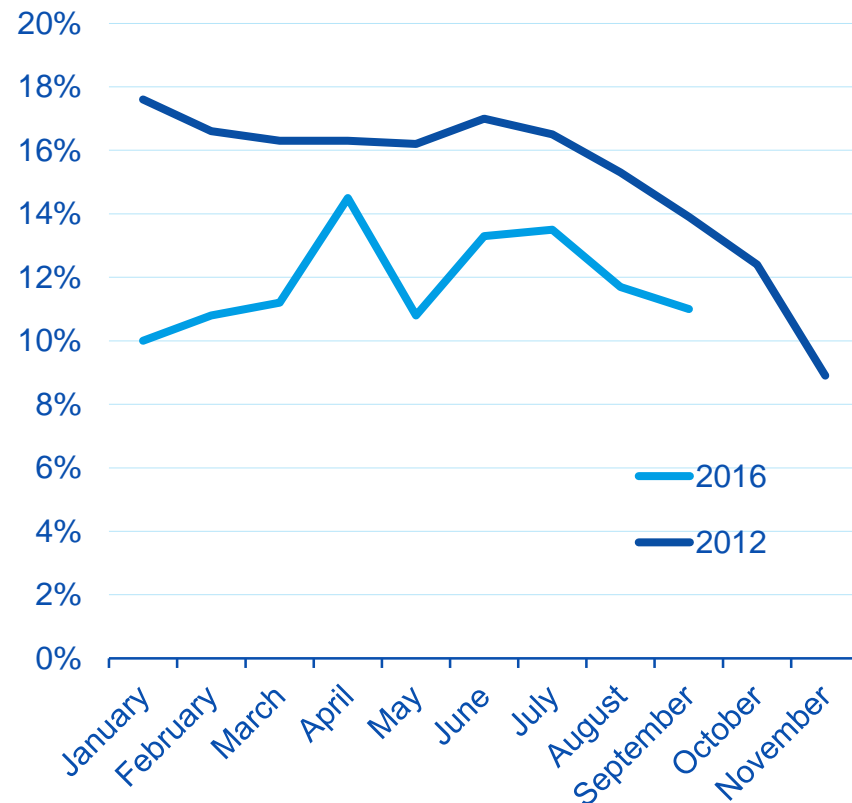
# A polarized time

Fewer swing voters and stronger candidate preference suggests growing polarization

Actions of Registered Voters on Election Day, %



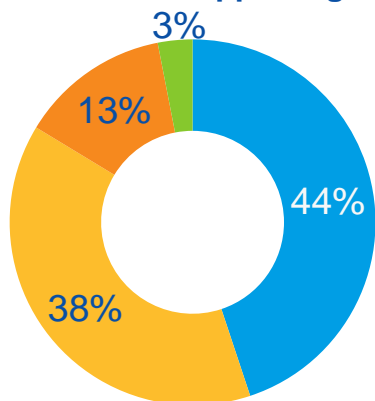
Undecided and Voting for Other Candidate, %



# Birds of a feather...

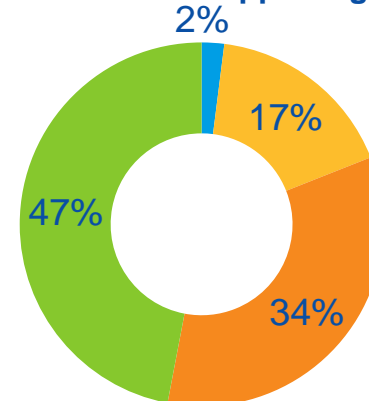
## Trump Supporters

Share of friends supporting Trump

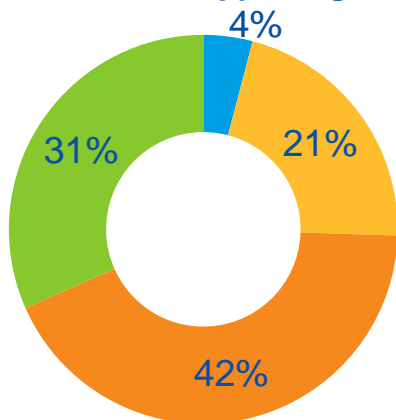


## Clinton Supporters

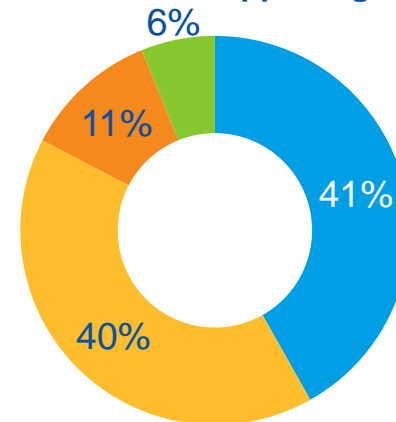
Share of friends supporting Trump



Share of friends supporting Clinton



Share of friends supporting Clinton



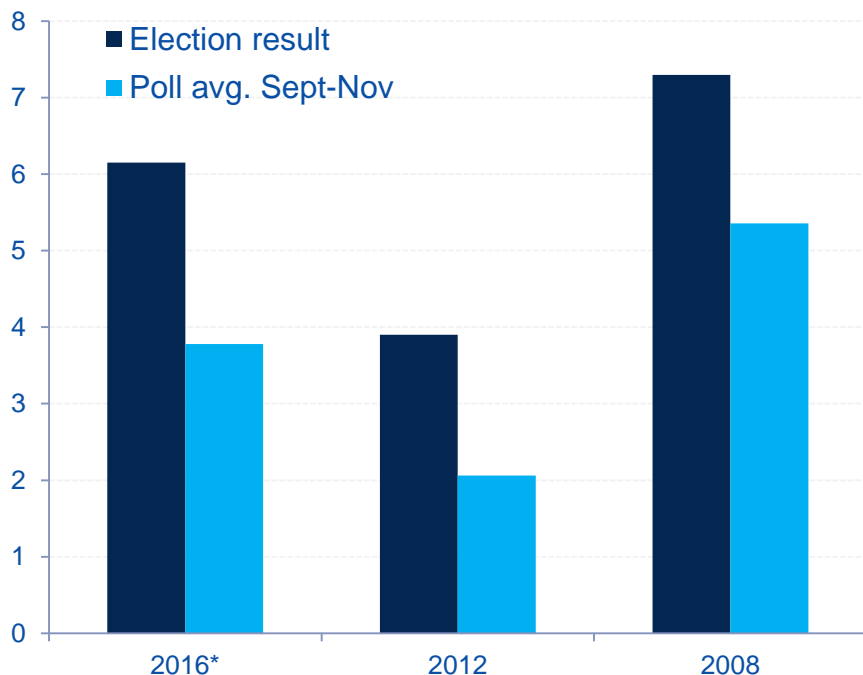
Sources: BBVA Research & Pew Research

\*Results based on % of registered voters saying how many of their close friends support either candidate

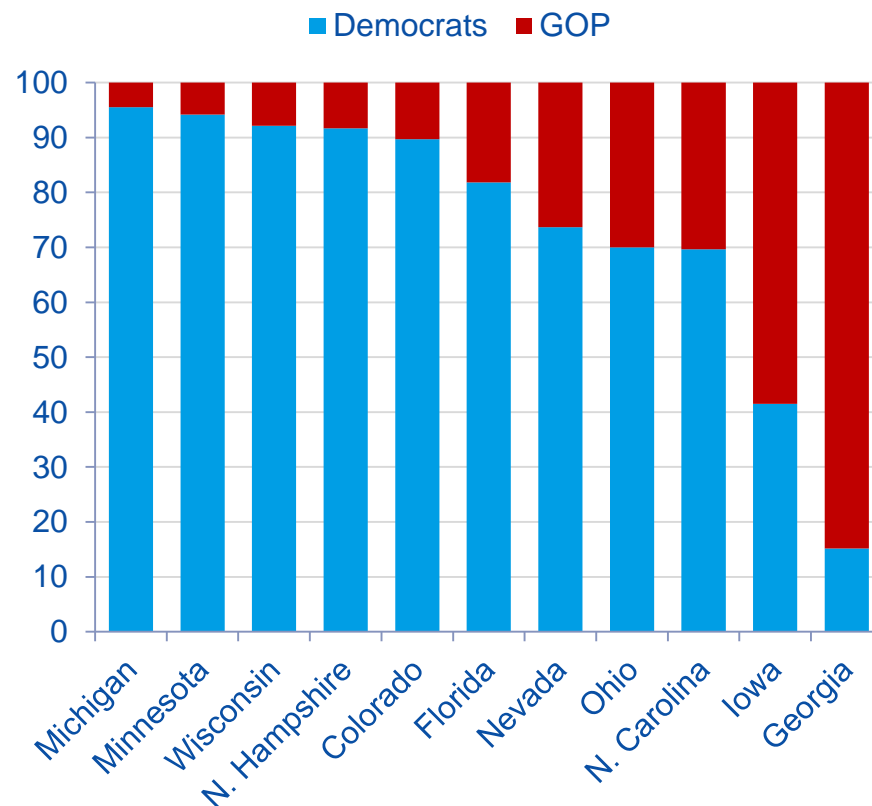
# Implied outcomes from polls

Post-debate polls show Clinton building a comfortable margin

Election Results vs. Polls, spread



Key States Voting Probabilities, %



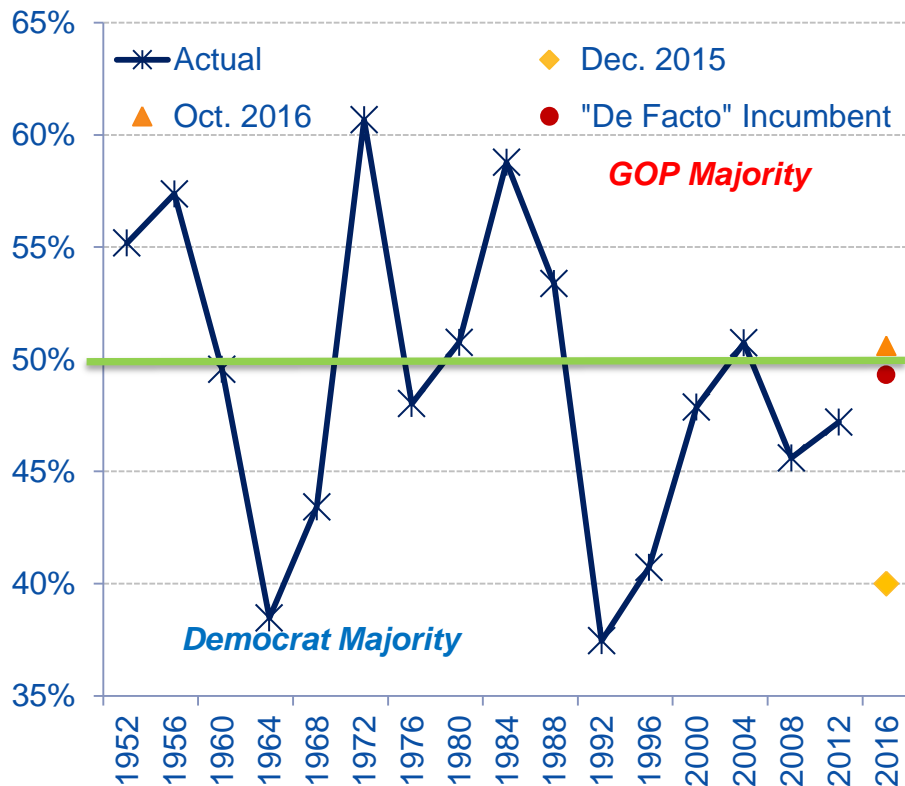
Sources: BBVA Research, RCP, NYT, PW, PEC, DK, FiveThirtyEight & HP

\*2016: implied results from polling average margins as of October in 2008 and 2012 elections

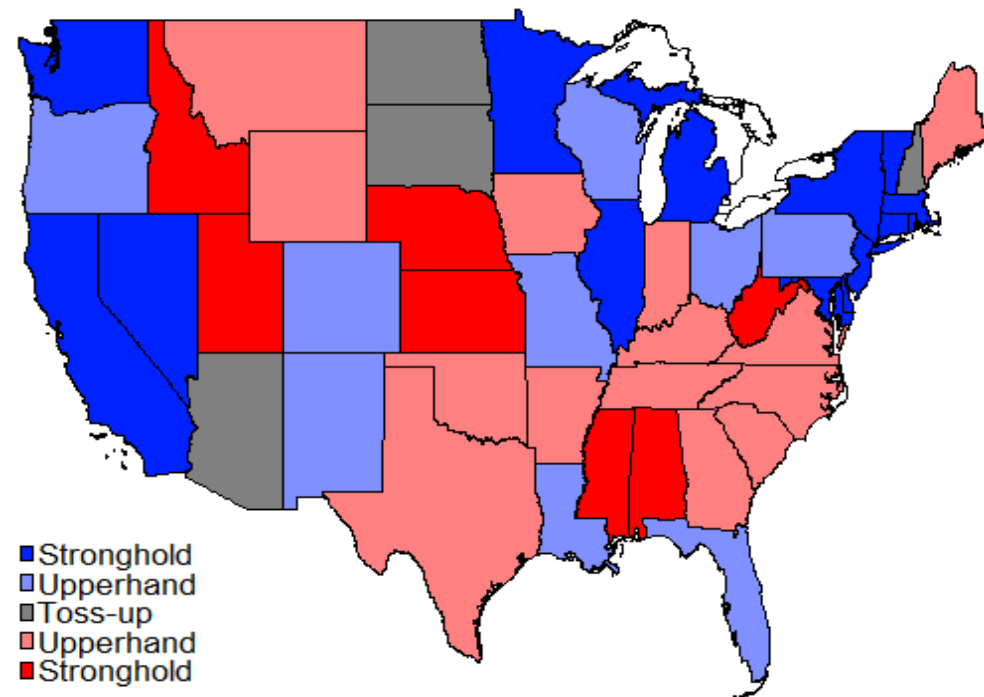
# Econometric projections

National projections imply tight race, but state-level projections still forecast Democrat victory (326 to 209 EV)

BBVA Research National Vote-Share Results\*



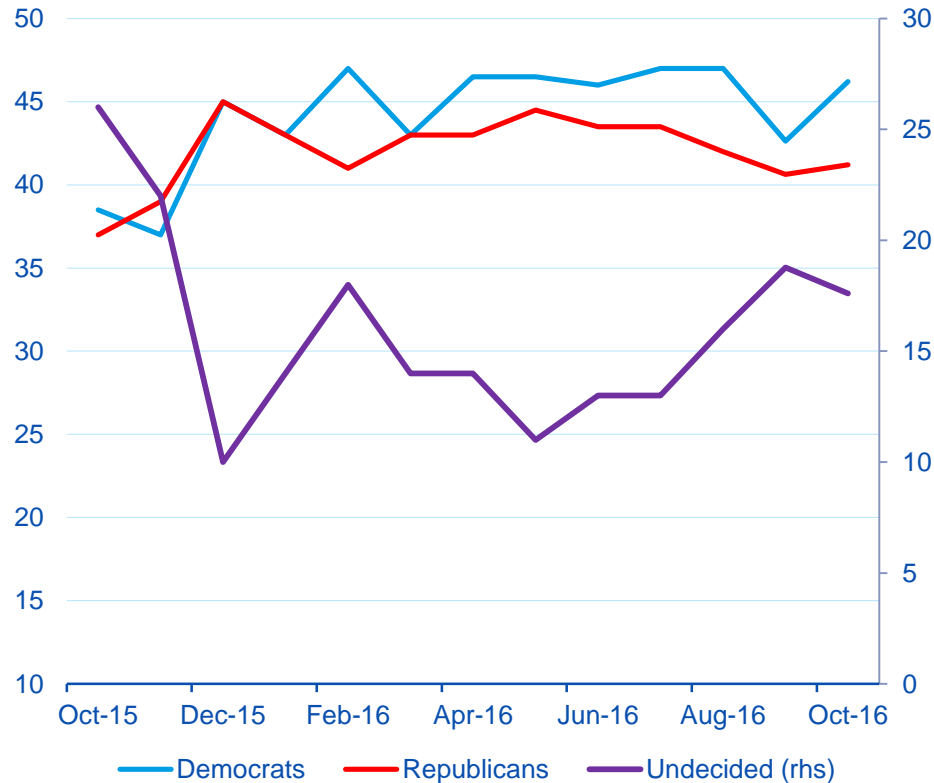
State-Level Vote Share Projection



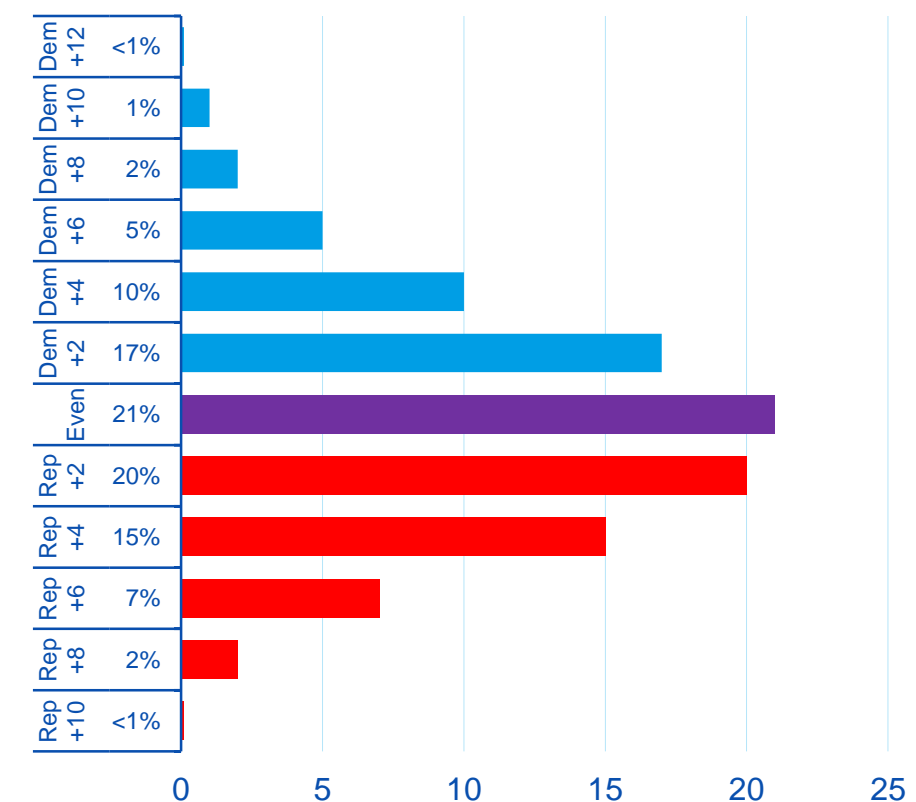
# Congressional elections

While electorate favors a Democratic Congress, most likely outcome is a divided Congress and White House

Generic Congressional Poll, %



Senate Election Probabilities, %

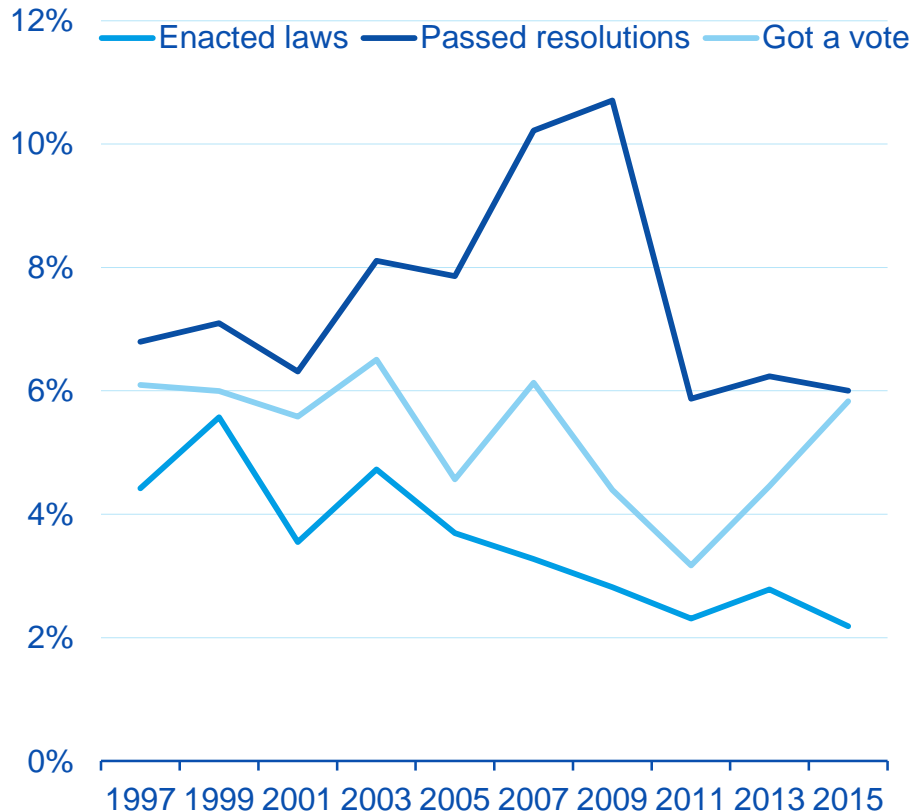




# Challenges for next presidential term

Post-election mood unlikely to be one ripe for compromise

Congressional Bills by Status, %\*



Outstanding Issues for 115<sup>th</sup> Session of Congress

115 <sup>th</sup> Session	
<b>Supreme Court nominee</b>	Vacancy on Supreme Court needs to be filled to restore voting majority
<b>U.S. Economic Competiveness</b>	Low productivity growth, inequality and inclusion, demographic shifts, weak investment, policy uncertainty, education, taxes
<b>Trans-Pacific Partnership</b>	Congressional authorization of the multi-lateral trade agreement likely to carry over from Obama's term
<b>Energy reform</b>	Bill to modernize the nation's electric grid and expand energy efficiency programs
<b>Immigration Reform</b>	Address DAPA/DACA, calls to providing naturalization/citizenship and upgrading visa system.
<b>Student Debt</b>	Lower the burden on the growing number of individuals unable to fulfill their current obligations

Sources: BBVA Research & GovTrack \*by first year of session

## Previous Presidential Election Chartbooks

[https://www.bbva.com/wp-content/uploads/2016/07/Election-Chartbook\\_July-2016\\_final.pdf](https://www.bbva.com/wp-content/uploads/2016/07/Election-Chartbook_July-2016_final.pdf)

[https://www.bbva.com/wp-content/uploads/2016/03/Election-Chartbook\\_March-2016\\_Final3.pdf](https://www.bbva.com/wp-content/uploads/2016/03/Election-Chartbook_March-2016_Final3.pdf)

[https://www.bbva.com/wp-content/uploads/2015/12/Election-Chartbook-December-2015\\_final.pdf](https://www.bbva.com/wp-content/uploads/2015/12/Election-Chartbook-December-2015_final.pdf)

## Connect with Us:



[researchusa@bbva.com](mailto:researchusa@bbva.com)



[www.bbvacompass.com/compass/research/](http://www.bbvacompass.com/compass/research/)



[@BBVAResearchUSA](https://twitter.com/BBVAResearchUSA) <https://twitter.com/BBVAResearchUSA>



BBVA ResearchUSA



<http://vimeo.com/bbvaresearchusa>



BBVA Research USA

### DISCLAIMER

This document was prepared by Banco Bilbao Vizcaya Argentaria's (BBVA) BBVA Research U.S. on behalf of itself and its affiliated companies (each BBVA Group Company) for distribution in the United States and the rest of the world and is provided for information purposes only. Within the US, BBVA operates primarily through its subsidiary Compass Bank. The information, opinions, estimates and forecasts contained herein refer to the specific date and are subject to changes without notice due to market fluctuations. The information, opinions, estimates and forecasts contained in this document have been gathered or obtained from public sources, believed to be correct by the Company concerning their accuracy, completeness, and/or correctness. This document is not an offer to sell or a solicitation to acquire or dispose of an interest in securities.