

Mexico

Weekly Watch

February 4, 2011

Next week...

Economic Analysis

Cecilia Posadas
c.posadas@bbva.bancomer.com

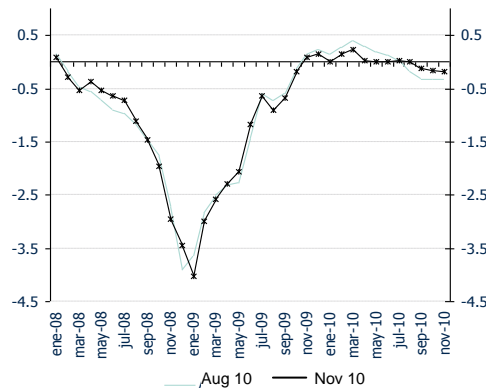
Iván Martínez
ivan.martinez.2@bbva.bancomer.com

Indicators of economic activity and prices will show moderate growth, with increasing contribution from domestic demand and lower inflation.

The coming week sees the publication of indicators relating to the close of last year: December industrial production and the National Survey of Occupancy and Employment (ENOE) for 4Q10 on the activity side; as well as the January inflation data and the Banxico report on inflation for the last quarter of last year, which is relevant for analysis of monetary policy. The minutes issued today, Friday the 4th, from the January meeting showed common elements in their structure to those of other central banks in developed countries. We consider that they clearly express they stress that inflationary expectations are a very important component of Banxico decision-making. Banxico highlights that the output gap is only one of the indicators taken into account in deciding-making, and that the rise in commodity prices is not a concern, as it does not affect inflationary expectations. There is no mention of replacing convergence towards the target inflation of 3% at the end of 2011 with "... convergence of inflation to its permanent target of 3 percent".

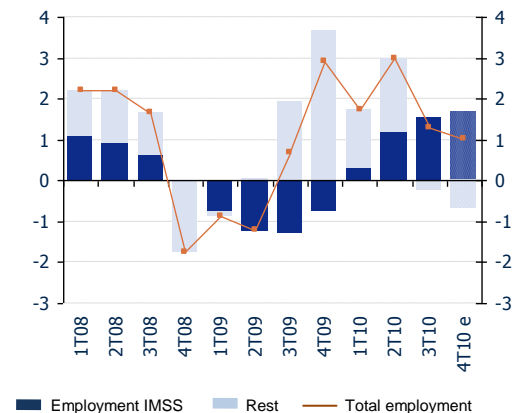
The information available so far suggests that at the end of 2010 the Mexican economy tended to stabilize its monthly growth. There was even a slight recovery by the components lagging behind most in the cycle, such as services and construction, in contrast with the sectors that were initially more dynamic, such as manufacturing industry. Average growth in the last two months of 2010 was 0.3% in the Economic Activity Index (IGAE) for services and (-)0.1% for industrial output. Both imports of capital goods, which are linked to investment, and imports of intermediate goods, linked to industrial output, tended to moderate towards the end of the year. A key factor in the domestic sector was the increase in employment, with stable rates of around 0.5% m/m. This is all consistent with the recovery being underway, although at a slower rate than in mid-2010. It is highly likely that Mexican GDP in 2010 will have grown slightly above 5%.

Chart 3
BBVA Synthetic Activity Indicator of activity for the Mexican economy



Source: Banxico

Chart 2
Employment (y/y % change)



Source: BBVA Research with Banxico data

Economic Analysis

Calendar: Indicators

Inflation

Friday, February 4

Friday 0.55% m/m (3.84% y/y); (previous: 0.5% m/m, 4.4% y/y)

The January inflation figures will be released on Wednesday. We expect a monthly increase of 0.55%, boosted mainly by the increase in the core component, which will grow by around 0.48% m/m. The main factor pushing core inflation up will be food prices, boosted by the higher price of cigarettes resulting from increased IEPS tax, and of tortillas, though these have slowed in recent fortnights. Non-core inflation will increase by 0.75%, boosted by energy prices and government-regulated tariffs. However, they will increase less than in January 2010, when there were major rises in tariffs such as the Metro of Mexico City. Annual inflation has begun to fall steeply. This is mainly due to the comparison base with 2010, when VAT increased from 15% to 16% and various public prices were unfrozen. We expect this trend to be maintained at least for the first quarter.

Cecilia Posadas
c.posadas@bbva.bancomer.com

Pedro Uriz
pedro.uriz2@bbva.bancomer.com

December Industrial Production Indicator

Friday, February 11: 0.3% m/m (3.4% y/y SA), (previous: 0.2% m/m, 4.2% y/y SA)

Given the recent movements in indicators such as U.S. industrial output, we expect that Mexican industrial output will have continued to grow moderately in December, slightly above the figure for the previous month. Sectors that had presented the biggest lag, such as construction, or branches of industry that are more linked to the domestic cycle, will show a slightly better recovery in monthly terms than those more closely linked to foreign demand.

Structural indicators of occupancy and employment, 4Q10 (ENOE); formal private employment, January 2011

ENOE: Friday 11

IMSS employment: this week, 0.4% m/m (5.3% y/y, SA) (previous: 0.5% m/m, 5.3% y/y, SA)

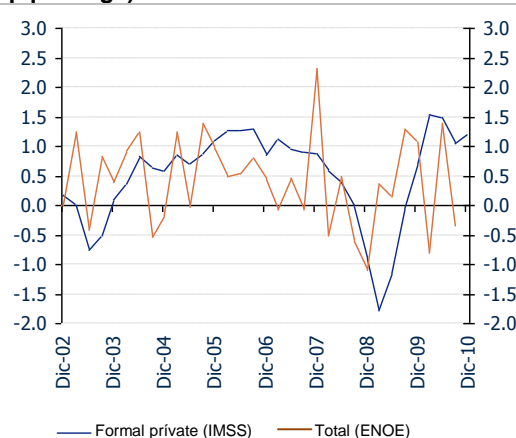
The figures for formal private employment (around a third of total employment) suggest that it will have continued to grow strongly in January. Of note are activities such as construction and manufacturing industry (0.8% m/m in each case, compared with an average of 0.7% and 0.5% respectively in the six previous months). As a result, around 748,000 net new jobs will have been created in the formal private sector of the economy since the same month the previous year. On Friday figures for the performance of the whole labor market will be released. In terms of employment this is more erratic, as can be seen in the accompanying chart, with the effect of an informal component which accumulates more volatile activities and occupations and which functions to a certain extent as a factor compensating movements in the formal market. In addition, although we already know the unemployment rates at the close of last year (5.3% with non-seasonally adjusted figures, 5.5% seasonally adjusted), it will be important to analyze the active population (PEA) and the structure by income, activity, type of economic unit, etc.

Table 1
Estimated inflation by component
(% y/y and m/m change)

	Weight (%)	Monthly change (%)						Annual change (%)		
		Average								
		2003-2009	Nov-10	Dic-10	Jan-11	Nov-10	Dic-10	Jan-11		
CPI-Mx	100.0	0.48	0.80	0.50	0.55	4.32	4.40	3.84		
Core-Mx	74.8	0.40	0.25	0.47	0.48	3.63	3.61	3.43		
Goods	37.0	0.41	0.35	0.48	0.90	3.69	3.82	3.76		
Food products	14.7	0.73	0.54	1.08	1.85	3.80	4.35	4.96		
Other Goods	22.4	0.17	0.19	-0.02	0.18	3.59	3.37	2.85		
Services	37.7	0.39	0.16	0.47	0.15	3.58	3.41	3.17		
Rent	17.9	0.19	0.13	0.17	0.25	2.75	2.64	2.36		
Education	5.2	0.01	0.00	0.00	0.24	4.65	4.64	4.55		
Other serv.	14.7	0.78	0.28	1.00	0.02	4.07	3.76	3.52		
Non Core-Mx	25.2	0.70	2.31	0.55	0.75	6.20	6.60	5.01		
Farm products	8.1	1.53	1.38	1.41	0.18	5.59	6.96	4.50		
Fruits/Vegetables	3.3	2.00	3.08	2.64	-0.42	10.15	14.00	7.93		
Meat/Eggs	4.8	1.28	0.23	0.55	0.64	2.64	2.46	2.24		
Public managed	17.2	0.30	2.80	0.11	1.08	6.52	6.41	5.30		
Energy	7.8	0.49	5.50	0.25	0.98	6.67	6.44	6.19		
Controlled prices	9.4	0.09	0.03	-0.04	1.16	6.37	6.37	4.35		

Source: BBVA Research and Banxico

Chart 4
Employment
(% q/q change)



Source: BBVA Research and Banxico

Market Analysis

Macro Latam Strategy

Chief Strategist
Octavio Gutiérrez Engelmann
o.gutierrez3@bbva.bancomer.com
+5255 5621 9245

Equity Latam

Chief Analyst
Rodrigo Ortega
r.ortega@bbva.bancomer.com
+52 55 5621 9701

FX Latam

Chief Strategist
Moises Junca, CFA, CMT
moises.junca@bbva.bancomer.com
+5255 5621 9380

Claudia Ceja

claudia.ceja@bbva.bancomer.com
+5255 5621 9715

Fixed Income Analysis Mexico

Chief Strategist
Ociel Hernández
o.hernandez@bbva.bancomer.com
+5255 5621 9616

Liliana Solis

liliana.solis@bbva.bancomer.com
+5255 5621 9877

Technical Analysis

Alejandro Fuentes
a.fuentes@bbva.bancomer.com
+52 55 5621 9975

Markets

Closing of short positions in USD in the face of political risks, accentuated by month-end adjustment. This has been transferred to emerging currencies

Last week was laden with economic information and events that impacted the region's currencies. The flow of U.S. economic data (personal spending, the ISM manufacturing index and the unemployment rate) resulted in a positive bias in the majority of crosses, though this was limited by the geopolitical conflicts in the Middle East. In addition, a less hawkish statement than expected by the ECB, coupled with the downgrade in Ireland's debt rating and the statement by Angela Merkel on the purchase of bonds from the European Stabilization Fund, led to profit-taking in EUR trading, which had only marginal and temporary effects on the MXN. Various factors have favored an extension in the trend towards appreciation: 1) Banxico's options had not been exercised at the close of Thursday (there was also a notable bid-to-cover ratio of 5.09 in the end-of-month auction); 2) the implied volatility corrected the rise in the previous month, and closed under 10%; 3) technical oscillating indicators point to a lower risk of correction; and 4) lower risk of exchange-rate intervention by Banxico. The risk to this outlook lies mainly in the Egypt factor, which would result in a consolidation under 12.10.

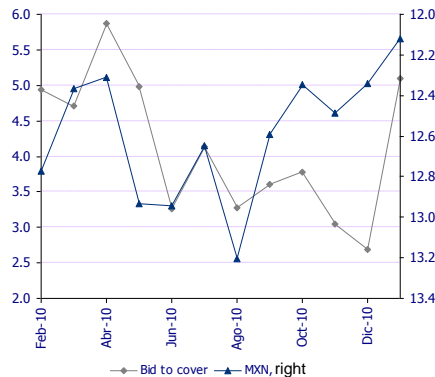
Lower risk aversion leads to a bias for the sale of sovereign bonds

An environment with favorable economic data in the U.S. leads to stronger economic growth. This has led investors to reduce their demand for safe-haven assets and liquidate their positions in Treasuries (e.g. the 10-years registered a correction of 30 bps last week). Given the high rate of correlation between Mexican and U.S. government bonds (3 months: 0.87), this effect is transferred to the domestic debt market, where the 10-year yield increased by around 25 bps. The behavior of the local debt market will be determined by the movement of Treasuries.

A weak start to the reporting season in Mexico will not mark the trend.

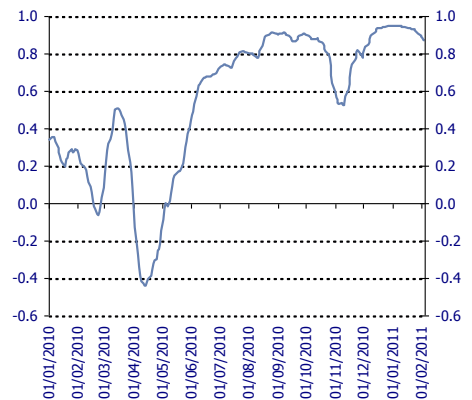
So far only 6 companies listed on the IPC index have reported, with the overall trend weak due to the bad results of Cemex and Telmex. Reporting companies showed a growth in sales from 7.7% to 12.3% in EBITDA and a fall of 31.6% in net profits. However, we believe that this trend will be reversed with the rest of the reports, as we expect them to maintain the trends observed in recent quarters, and despite the comparison base, the mining and industrial sector will continue to give good results. As an aggregate, we estimate growth rates of between 9% and 10% in revenues, EBITDA and Net Profit. There will be little activity during this week in terms of reports, as we only expect that of Amx.

Chart 5
Premium paid on Banxico options vs. MXN



Source: BBVA Research with Banxico data

Chart 6
3-month correlation: Treasury and 10-year bond



Source: BBVA Research with data from Bloomberg

Mexico City, February 4, 2011

Market Analysis
Equities

Technical Analysis

Alejandro Fuentes Pérez (*)
a.fuentes @bbva.bancomer.com
5255 5621 9705

(*) Writer(s) of the report

Technical Analysis

CPI Stock Market Index



Source: BBVA, Bancomer, Bloomberg

CPI: The upturn of just over 1,300 points in the first three sessions of the week moved the CPI index back to the 30-day moving average (around 38,000 points), after which it adjusted by around 400 points at the close of the week. At this time, this upturn can only be considered a pull-back to a resistance level. Only until it is exceeded can we consider a change in the short-term trend with a new target of 39,000 points. A return by the IPC to below the 10-day moving average (37,488 points) would put renewed pressure on the market over the coming days.

Previous recommendation: The differential between the CPI and the Dow leads us to believe that this floor (2% below the current level) may be respected.

MXN



Source: BBVA, Bancomer, Bloomberg

MXN: After unsuccessfully trying to break through the ceiling of the 30-day moving average, it has moved back down towards the MXN 12.00 zone, and has even traded at under this zone. Its trading range in the following days may be between MXN 11.95 and MXN 12.05 (10-day moving average), without ruling out a breakthrough below the support to the MXN 11.75 zone.

Previous recommendation: We consider that there is still a possibility of an upward breakthrough of this level to the next level at MXN 12.40.

3Y M BOND

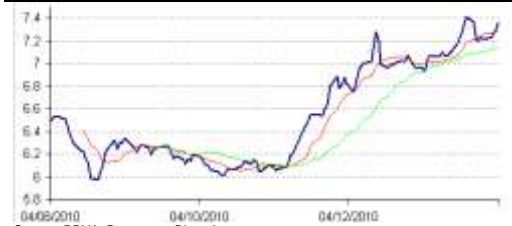


Source: BBVA, Bancomer, Bloomberg

3Y M BOND: (yield): A week of rises, but maintaining the major expansion of moving averages. We believe that the upturn may end at the earlier maximum 6%, with support at 5.7%.

Previous recommendation: The very wide dispersal between the 10 and 30-day moving averages suggests that it may return to the 5.55% zone.

10Y M BOND



Source: BBVA, Bancomer, Bloomberg

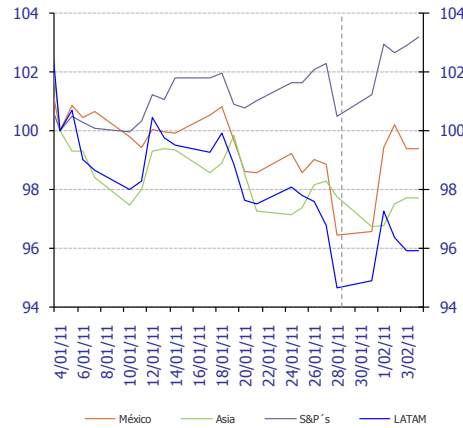
10Y M BOND (yield): Upturn in the week toward the previous maximum of 7.4%. We see a possible return to 7.1% before the upward resistance is broken.

Previous recommendation: At this moment we only consider a return to the support of 7.1%.

Markets

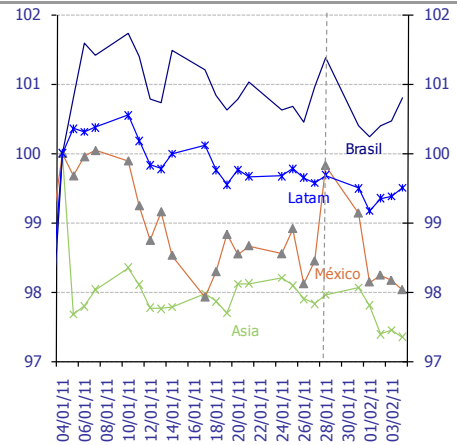
Overall rise in stock markets and appreciation in the peso, linked to a fall in geopolitical risk and better than expected figures from manufacturing industry in the U.S. and China

Chart 5
Stock markets: MSCI indices (Jan 4 2011 index = 100)



Source: Bloomberg & BBVA Research

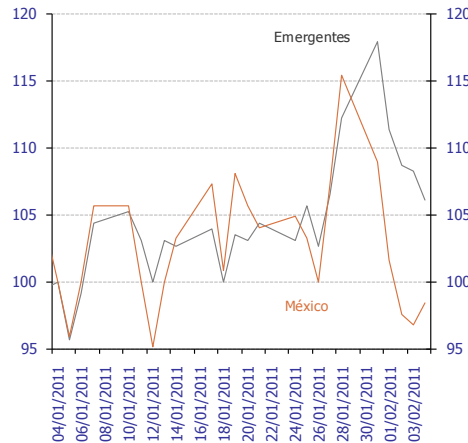
Chart 6
Foreign exchange: Dollar Exchange Rates (Jan 4 2011 index =100)



Source: Bloomberg and BBVA Research. Note: LATAM includes Argentina, Brazil, Chile, Colombia and Peru. Asia includes the Philippines, South Korea, Taiwan, Singapore, Indonesia and Thailand. Non-weighted averages.

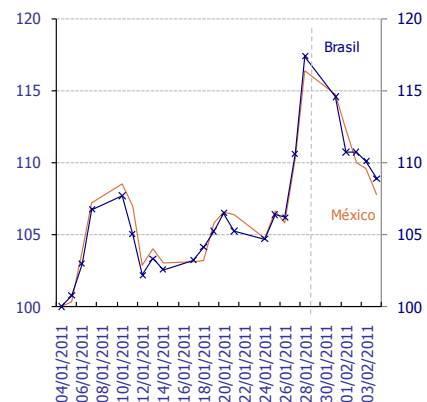
Fall in risk aversion at the end of the week due to a reduction in geopolitical risk

Chart 7
Risk: EMBI+ (January 4, 2011 index = 100)



Source: Bloomberg and BBVA Research.

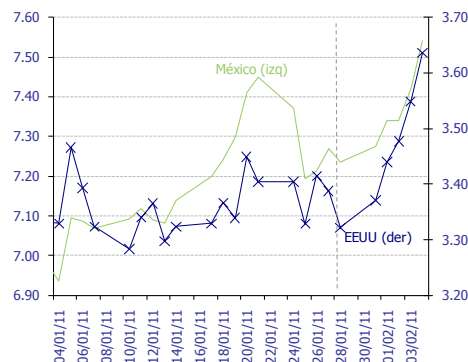
Chart 8
Risk: 5-year CDS (January 4 2011 index =100)



Source: Bloomberg and BBVA Research.

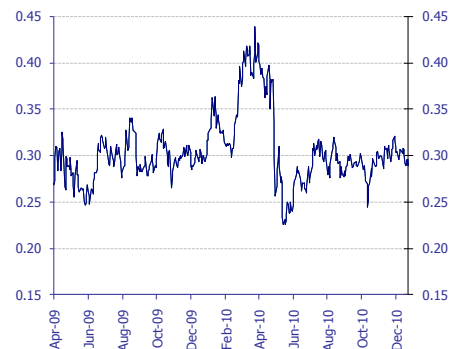
Rise in U.S. rates following data that strengthen the hypothesis of economic growth. Rates in Mexico move in line

Chart 9
10-year interest rates*, last month



Source: Bloomberg and BBVA Research

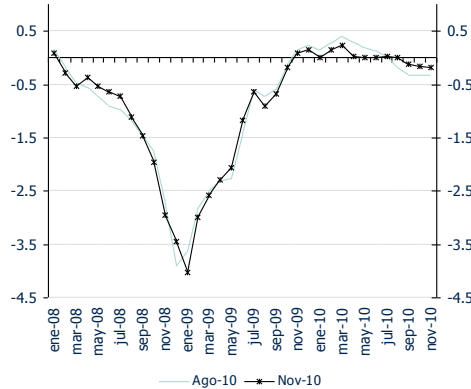
Chart 10
Carry-trade Mexico index (%)



Source: Bloomberg and BBVA Research

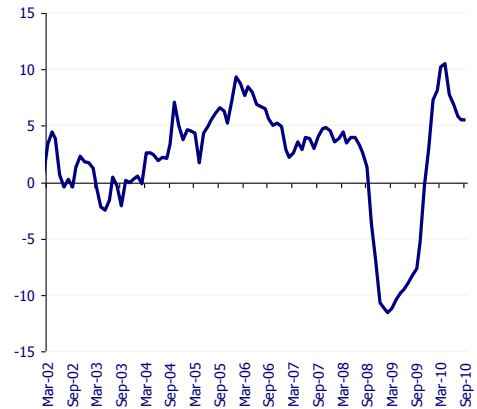
Economic activity, inflation, monetary conditions

Chart 11
Economic Cycle Indicator (Standardized)



Economic activity in Mexico has improved, but the speed of recovery appears to have moderated

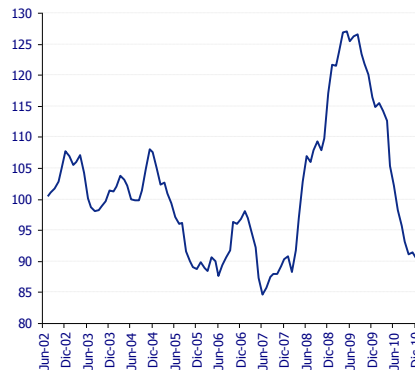
Chart 12
Advance Indicator of Activity (% y/y change)



Source: BBVA Research with data from INEGI, AMIA and BEA
Weighted sum of 21 different activity indicators, expenditure and expectations, based on trend series.

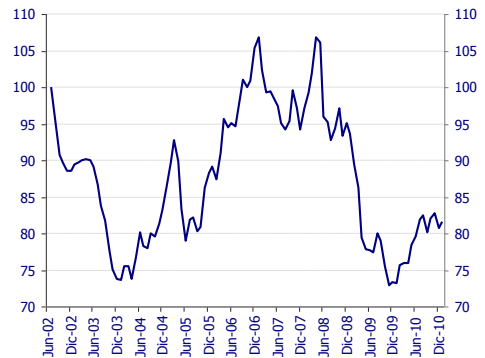
Source: INEGI

Chart 13
Inflation Surprise Index (July 2002=100)



Inflation surprises decreased throughout most of 2010, while activity surprises moderated.

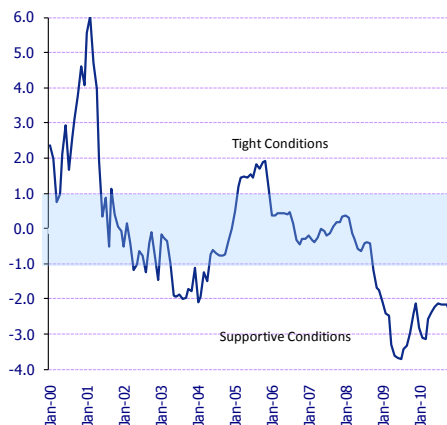
Chart 14
Activity Surprise Index (2002=100)



Source: BBVA Research with data from Banxico from the monthly surveys on the expectations of economic specialists in the private sector.

Source: BBVA Research with data from Bloomberg. Difference between recorded data and the Bloomberg consensus for seven activity variables in Mexico. Standardized index. Rises (falls): positive (negative) surprises.

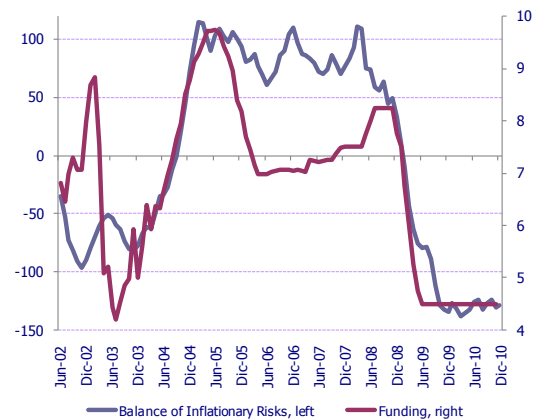
Chart 15
Monetary Conditions Index



The monetary conditions in which the economy is moving are accommodative. No upward movements are therefore expected to the reference rate in the short term

Source: BBVA Research

Chart 16
Balance of Inflationary Risks* and Funding (standardized and %; monthly averages)



Source: BBVA Research. *Standardized, weighted index (between inflation and economic growth); uses economic indicators for activity and inflation. A rise in the IBR signals greater weight of inflationary risk over those of growth and, therefore, more likelihood of monetary restriction

IMPORTANT DISCLOSURES**Analyst Certification**

I, Moisés Junca, Claudia Ceja, Ociel Hernández, Liliana Solís, Alejandro Fuentes, Edgar Cruz y Octavio Gutiérrez Engelmann, hereby certify that the views expressed in this research report accurately reflect my personal views about the mentioned corporation(s) and its (their) securities. I also certify that I have not been, am not, and will not be receiving direct or indirect compensation in exchange for any specific recommendation in this report.

Rating, target price and price history information for the companies that are the subject of this report are available at www.bancomer.com

Receipt of Compensation / Provision of Services current as of 1/18/11

Management or Co- Management of Public Offering. Within the past twelve months, BBVA Bancomer, S.A., Institución de Banca Múltiple, Grupo Financiero BBVA Bancomer ("BBVA Bancomer"), and/or its affiliates, have participated as manager or co-manager in public offerings, and received compensation for these services, of the company(ies), which is(are) the subject of this report: **Actinver, Banco Interacciones, Banco Inbursa, BNP, Bimbo, Cemex, Comisión Federal de Electricidad, Corporación Interamericana de Inversiones, Chedraui, Daimler, Embotelladoras Arca, El Puerto de Liverpool, Ferrocarril Mexicano, Fonacot, GE Capital Bank, General Electric, GMAC, Hipotecaria su Casita, Maxcom, Megacable, Nematik, NRF(Nissan), OHL, Paccar, Pemex, Posadas, Prudential Fiancial, Ruba, Telmex Internacional, Telefónica Móviles México, Toyota, Urbi, VWLease.**

Investment Banking Compensation. Within the past twelve months, BBVA Bancomer, and/or its affiliates, have received compensation for investment banking, common representation and credit related services from the Company/ies, which is(are) the subject of this report: **Acciona, Aeromexico, Agropecuaria Santa Genoveva, Alsea, América Móvil, Asur, Avicola Pilgrim's Pride de Mexico, Axtel, Bancomext, Banco de Credito e Inversiones, Banorte, BMV, Cemex, Cencosud, CIE, Cintra, Colbun, Comercial Mexicana, Comisión Federal de Electricidad, Concesionaria Mexiquense, Consorcio Comex, CAF, Controladora de Farmacias, Copamex, Coppel, Corporación Geo, Corporativo Arca, Corporación Moctezuma, Credito Inmobiliario, Daimler Chrysler de México, Dine, El puerto de Liverpool, El palacio de Hierro, Elementia, Empresas Cablevisión, Endesa (Chile), Facileasing, Factoring Corporativo, Farmacias Benavides, FCC, Femsa, Ferrosur, Filtrona, Fomento de Infraestructura Turistica Cancun, GEO, Gruma, Grupo Alfa, Grupo Ara, Grupo Brescia, Grupo Bimbo, Grupo Carso, Grupo Casa Saba, Grupo Cementos de Chihuahua (GCC), GAP, Grupo Comercial Chedraui, Grupo Collado, Grupo Comercial Gomo, Grupo Dermot, Grupo Elektra, Grupo Famsa, Grupo Femsa, Grupo Financiero Inbursa, Grupo R, Grupo Scotiabank, Grupo Herdez, Grupo ICA, Grupo La Moderna, GMAC, Grupo Maseca, Grupo México, Grupo Posadas, Grupo R, Grupo Sanborns, Grupo TMM, Grupo Videomax, Grupo Xignux, Hilasal Mexicana, Homex, HSBC, Holcim (Apasco), Hylsamex, Imsa/Tarida/Ternium, Industrias Bachoco, Hipotecaria Casa Mexicana, Hipotecaria su Casita, Industrias Aluprint, Industrias CH, Industrias Peñoles, Inmobiliaria Ruba, Inter ceramic, Kansas City Southern de México, Kaupthing Bank, Kimberly Clark México, Lamosa, Liverpool, Mabe, Manufacturas Kaltex, Medica Sur, Megacable, Mexichem, Minera los Pelambres, Molymet, Municipio de Aguascalientes, Nadro, Nafin, NRF México, Nematik, OHL, Paccar, Pasa, Pemex, Petrotemex, Pimsa, Plavicom, Prolec GE, Ruba, Sare, Sears, Sigma, Simec, Scotia Bank Inverlat, Techint, Telefónica CTC, Telefónica Móviles, Telint, Tenaris, Toyota, Urbi, Value, Volcan Cia Minera, VWLease.**

Expected Investment Banking and services Compensation. In the next three months, BBVA Bancomer, and/or any of its affiliates, expects to receive or intends to seek compensation for investment banking, common representation and credit related services from the company (ies) discussed in this report.

BBVA Bancomer acts as market maker/specialist in: **MexDer Contrato de Futuros (Dólar de Estados Unidos de América (DEUA), TIIE de 28 días (TE28), Swap de TIIE, CETES de 91 días (CE91)), Bonos M, Bonos M3, Bonos M10, Índice de Precios y Cotizaciones de la BMV (IPC), Contrato de Opciones (IPC, Acciones América Móvil, Cemex, CPO, Femsa UBD, Gcarso A1, Telmex L).**

BBVA acts as market maker/specialist in Latibex: **Alfa, AMX, Corporación Geo, Grupo Modelo, ICA, Sare, Telmex.**

BBVA Bancomer, is recognized by Mexico's Finance Ministry as a market improver and acts as a market maker/specialists in MEXDER, Mercado Mexicano de Derivados.

Ownership Positions

BBVA Bancomer, and/or its affiliates holds, directly or indirectly, at least 1 % of the equity capital of the following company/ies whose shares are open to negotiation in organized markets and which is(are) the subject of this report: **BOLSA, CEMEX VENEZUELA, GAP, GRUPO VIDEOVISA, MAXCOM TELECOMUNICACIONES, PASA, PROMOTORA Y OPERADORA DE INFRAESTRUCTURA.**

BBVA Bancomer, and/or its affiliates hold(s), directly or indirectly; as of the end of the last quarter, at least a 10 % of its investment portfolio, or 10% of the amount issued, of the securities or underlying investments issued by the companies which is(are) the subject of this report: **AXTEL.**

Other Disclosures

To the best of BBVA Bancomer's knowledge, a Member of its Board, its CEO or Senior Manager holding a direct reporting position to BBVA Bancomer's CEO holds a similar position in any of the following company/ies which is(are) the subject of this report: **Alfa, Asea, Amx, Asur, Bimbo, CMR, Dine, Femsa, GAP, Gmodelo, Grupo financiero Inbursa, Grupo Carso, Grupo Posadas, Hogar, Invex, Kof, Kuo, Liverpool, Maseca, Oma, Peñoles, Sanborns Hermanos, Sears Roebuck, Telecom, Telefónica Móviles México, Telmex, Tenaris, Tlevisa, Urbi, Vitro.**

Additional Information and Disclaimer

Ratings and Price Targets

As of December 31, 2010, for the whole universe of companies which BBVA Bancomer has under coverage there are **48%** Buy ratings (including "Buy" and "Outperform"), **0%** Neutral ratings and **52%** Sell ratings (including "Sell" and "Underperform"). BBVA Bancomer or any of its affiliates has rendered Investment Banking services or participated as manager and/or co-manager in public offerings in **57%** of the Buy ratings, **0%** of the Neutral ratings and in **43%** of the Sell ratings.

Ratings are set on a six-month or year-end basis against the relevant benchmark. BBVA Bancomer issues three equity recommendations: **Outperform:** Upside potential of more than 5% vs. the market. **Neutral:** Stock is expected to perform in line with the market (+/-5%). **Underperform:** Expected downside of at least 5% vs. the market:

Recommendations reflect the stock's expected performance vs the market, within a specified period. This performance may be explained by the fundamental stock valuation method and other factors. The fundamental stock valuation method used by BBVA Bancomer S.A., is based on a combination of one or more generally accepted financial analysis methodologies, which may include, multiples, discounted cash flows, sum of parts or any other methodology that applies to the particular case. Notwithstanding other factors include newsflows, benefit timing, M & A's and market's appetite in a given sector. These factors can lead to a recommendation contrary to that indicated by the simple fundamental valuation results and its comparison with direct quotations.

This document and the information, opinions, estimates and recommendations expressed herein, have been prepared by BBVA Global Markets Research an affiliate of Banco Bilbao Vizcaya Argentaria, S.A. (BBVA) and/or BBVA Bancomer, to provide their or its customers with general information as of the date of the report and are subject to changes without prior notice. BBVA Bancomer is not liable for giving notice of such changes or for updating the contents hereof. This document and its contents do not constitute an offer, invitation or solicitation to purchase or subscribe to any securities or other instruments, or to undertake or divest investments. Neither shall this document nor its contents form the basis of any contract, commitment or decision of any kind. For more information please contact the persons included in the directory of this document.

The determination of a price target does not imply any warranty that it will be attained. For a discussion of the risks associated with the attainment of price targets, which depend on intrinsic and extrinsic factors that affect both the performance and trends prevailing in the market on which the recommended securities is traded and/or offered, please refer to our recently published documents, which are available via e-mail, contact our analysts or visit our internet site www.bancomer.com.

Investors who have access to this document should be aware that the securities, instruments or investments to which it refers may not be appropriate for them due to their specific investment goal, financial position or risk profile, for these have not been taken into account in the preparation of this report. Therefore, investors should make their own investment decisions considering the said circumstances and obtaining such specialized advice as may be necessary. Investors should note that the past performance of securities or instruments or the historical results of investments do not guarantee future performance. The market prices of securities or instruments or the results of investments could fluctuate against the interests of investors. investors should be aware that they could even face a loss of their investment.

The contents of this document are based upon information available to the public that has been obtained from sources considered to be reliable. However, such information has not been independently verified by BBVA Bancomer, and therefore no warranty, either express or implicit, is given regarding its accuracy, integrity or correctness. BBVA Bancomer, accepts no liability of any type for any direct or indirect losses arising from the use of the document or its contents.

Investors should note that the past performance of securities or instruments or the historical results of investments do not guarantee future performance. The market prices of securities or instruments or the results of investments could fluctuate against the interests of investors. Investors should be aware that they could even face a loss of their investment.

Transactions in futures, options or high-yield securities can involve high risk and are not appropriate for every investor. Indeed, in the case of some investments, the potential losses may exceed the amount of the initial investment; in such circumstance, investors may be required to pay more money to support those losses. Thus, before undertaking any transaction with these instruments, investors should be aware of their characteristics, as well as the rights, liabilities and risks associated with these securities and their underlying investments. Investors should also be aware that secondary markets for the said instruments may be limited or may not exist.

BBVA Bancomer, or any of its affiliates, as well as their respective executives and employees, may have a position in any of the securities or instruments referred to, directly or indirectly, in this document, or in any other related thereto; they may trade for their own account or for third-party account in those securities, provide consulting or other services to the issuer of the aforementioned securities or instruments or to companies related thereto or to their shareholders, executives or employees, or may have interests or perform transactions in those securities or instruments or related investments before or after the publication of this report, to the extent permitted by the applicable law.

BBVA Bancomer BBVA Securities Inc., BBVA Brazil, BBVA Continental, BBVA Banco Frances, BBVA Chile or any affiliate of the BBVA Group, of its affiliates' salespeople, traders, and other professionals may provide oral or written market commentary or trading strategies to its clients that reflect opinions that are contrary to the opinions expressed herein. Furthermore, BBVA Bancomer or any of its affiliates' BBVA Securities Inc., BBVA Brazil, BBVA Continental, BBVA Banco Frances, BBVA Chile or any affiliate of the BBVA Group's proprietary trading and investment businesses may make investment decisions that are inconsistent with the recommendations expressed herein.

No part of this document may be (i) copied, photocopied or duplicated by any other form or means (ii); redistributed or forwarded; or (iii) quoted, without the prior written consent of BBVA Bancomer. No part of this report may be copied, conveyed, distributed or furnished to any person or entity in any country (or persons or entities in the same) in which its distribution is prohibited by law. Failure to comply with these restrictions may breach the laws of the relevant jurisdiction.

This document is provided in the United Kingdom solely to those persons to whom it may be addressed according to the Financial Services and Markets Act 2000 (Financial Promotion) Order 2001 and it is not to be directly or indirectly delivered to or distributed among any other type of persons or entities. In particular, this document is only aimed at and can be delivered to the following persons or entities (i) those outside the United Kingdom (ii) those with expertise regarding investments as mentioned under Section 19(5) of Order 2001, (iii) high net-worth entities; and (iv) any other person or entity under Section 49(1) of Order 2001 to whom the contents hereof can be legally revealed.

This document is being distributed for BBVA Bancomer in Singapore by Banco Bilbao Vizcaya Argentaria (BBVA), Singapore Branch purely as a resource and for general informational purposes only, and is intended for general circulation. Accordingly, this research document does not take into account the specific investment objectives, financial situation, or needs of any particular person and is exempted from the same by Regulation 34 of the Financial Advisers Regulations ("FAR") (as required under Section 27 of the Financial Advisers Act (Cap. 110) of Singapore ("FAA")).

Please note Banco Bilbao Vizcaya Argentaria (BBVA) is not an Authorised Deposit taking Institution within the meaning of the Banking Act 1959 nor is it regulated by the Australian Prudential Regulatory Authority (APRA).

The remuneration system concerning the analyst/s author/s of this report is based on multiple criteria, including the results obtained by BBVA Bancomer BBVA Securities Inc., BBVA Brazil, BBVA Continental, BBVA Banco Frances, BBVA Chile and by BBVA Group in the fiscal year, which, in turn, include the results generated by the investment banking business, common representation or credit related services; nevertheless, they do not receive any remuneration based on revenues from the mentioned areas or a specific transaction in investment banking, common representation or credit related services.

The information contained in this document should be taken only a general guide on matters that may be of interest. The application and impact of the laws may vary substantially depending on specific circumstances. Changes in regulations and the risks inherent in electronic communication may cause delays, omissions, or inaccuracy in the information contained in this site. Accordingly, the information contained in the site is supplied on the understanding that the authors and editors do not hereby intend to supply any form of consulting, legal, accounting or other advice. As such, it should not be considered a substitute for the direct advice provided by accounting and fiscal advisors or other competent consultants.

All images and texts and texts are the property of BBVA Bancomer and may not be downloaded from the Internet, distributed, stored, re-used, re-transmitted, modified or used in any way, except as specified in this document, without the express written consent of BBVA Bancomer. BBVA Bancomer reserves all intellectual property rights to the fullest extent of the law. None of the information contained herein may be interpreted as a concession by implication, exclusion or any other means, of any patent or brand of BBVA Bancomer or of any third party. Nothing established herein should be interpreted as a concession of any license or right under any BBVA Bancomer copyright.

BBVA Bancomer, as well as its executives and employees have adopted the Código de Conducta de Grupo Financiero BBVA Bancomer, which is available in our internet site www.bancomer.com.

BBVA Bancomer, BBVA and the entities of the BBVA Group, including BBVA Global Markets Research, are subject to BBVA Group Policy on Conduct in the Securities Markets. In each entity where the Group Conducts Businesses in the Security Markets, the Policy is supplemented with the Internal Standards of Conduct which, among other regulations, include rules to prevent and avoid conflicts of interests with the ratings given, including information barriers. The BBVA Group Code of Conduct for Security Market Operations is available for reference at the following web site: www.bbva.com / Corporate Governance / Conduct in the Securities Markets.

BBVA Bancomer is regulated by the Comisión Nacional Bancaria y de Valores.

“Banco Bilbao Vizcaya Argentaria S.A. (CE number AFR194) is regulated by the Hong Kong Monetary Authority and the Securities and Futures Commission in Hong Kong”

BBVA Bancomer BBVA Brazil, BBVA Continental, BBVA Banco Frances, BBVA Chile as well as other entities in the BBVA Group that are not members of the FINRA (Financial Industry Regulatory Authority), are not subject to the rules of disclosure affecting such members.

This material is being distributed into the United States in reliance on an exemption from broker-dealer registration under Rule 15a-6 of the Rules under the Securities Exchange Act of 1934. Any trades in the securities discussed in this report must be effected through a U.S. registered broker/dealer as we are not authorized to accept any order to effect trades in any security discussed in this report within the U.S.