

Weekly Watch

Mexico

May 13, 2011

Economic Analysis

J. Julián Cubero
 juan.cubero@bbva.bancomer.com

Cecilia Posadas
 c.posadas@bbva.bancomer.com

Market Analysis

Octavio Gutiérrez Engelmann
 ogutierrez3@bbva.bancomer.com

Next week...

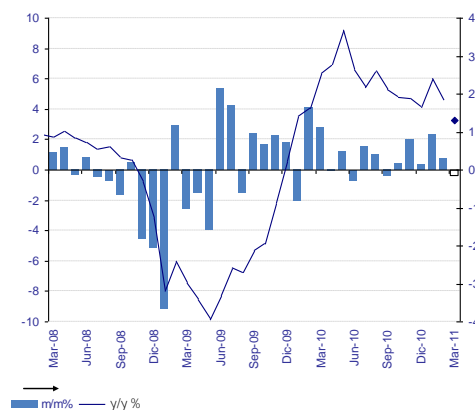
The past takes center stage

This week brings the first official GDP estimate for 1Q11 when pointers for how 2Q11 is going with April data on confidence, employment and automotive output. We expect INEGI to confirm that the Mexican economy continued to expand in the 1Q11 at a rate of nearly 1% (our forecast is 1.1% and Banxico's, published last Wednesday, is 0.6%). Therefore, for now, it seems to be a quarter with higher growth than 2Q11. Most recent data on domestic and US formal employment, industrial output and forecasts are in line with a GDP slowdown in the current quarter. In any case, the first half of 2011 would see growth shown in a change in the composition from higher contributions from overseas and domestic demand where the conditions for growth (an improvement in available household income, favorable financing conditions) continue.

The balance for the last week shows a wide operating range for the MXN and an increase in government bond curves

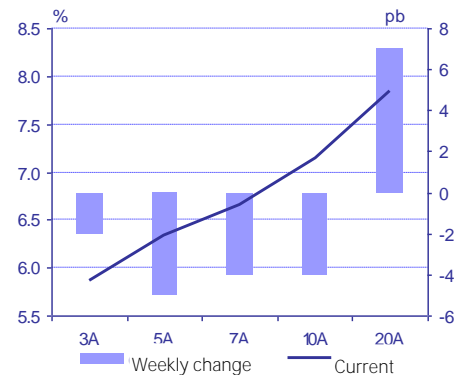
External determining factors continue to dominate movement on financial markets in Mexico where the MXN saw a wide fluctuation range (11.54-11.74) according to the flow of cyclical, sovereign and international monetary news. Nonetheless, liquidity factors remain whereby parity could reach floors of 11.55 if risk premiums ease. On bond markets, the downward move and increased slope is in line with what was seen in the US. The reduction in risk premiums for some corporations also stood out over the week after the Supreme Court's ruling on the telecoms sector.

Chart 1
 IGAE Total (% change y/y and m/m)



Source: BBVA Research

Chart 2
 Bond Yield Curve (% and bp)



Source: BBVA Research and Bloomberg

Calendar: Indicators

IGAE in March

GDP in 1Q11

IGAE: Thursday, May 19. -0.1% m/m, 3.3% y/y (previous: 0.3% m/m, 4.6% y/y)

GDP: Thursday, May 19. 1.1% q/q, 5.6% y/y (previous: 1.3% q/q, 4.4% y/y)

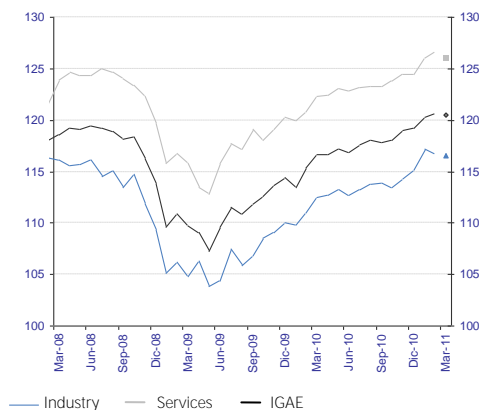
Economic Analysis

Cecilia Posadas
c.posadas@bbva.bancomer.com

This Thursday sees the release of first quarter GDP figures on the supply side. We believe it will come in positive, perhaps even better than expected at the start of the year, although recent data point to some weakness. Industrial output continued to improve largely due to the good performance in key areas such as the automotive industry, machinery and equipment, and basic metals. In this way, the average monthly variation in the first three months of the year for industry was 0.2%, somewhat below the 0.9% average growth in the last quarter of last year. In turn, the average change in the first two months of the year was 0.9% (0.2% in 4Q10) in the service sector. However, given industrial performance in March seeing a contraction for the second month in a row, we should expect some slowdown in services, especially in those linked to manufacturing. In all and in contract with the start of the recovery, up-to-date data point to growth driving output is now more balanced and service components linked to domestic demand tending to maintain more decided growth.

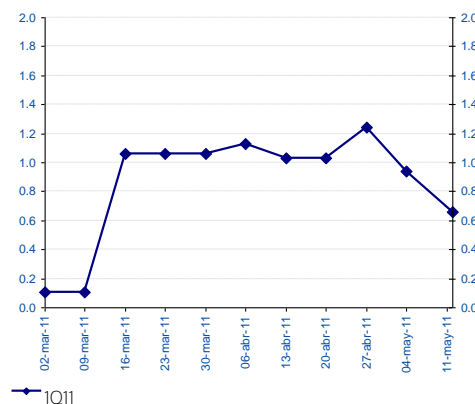
We forecast the March IGAE could have slightly slid back (-0.1% m/m), with changes of (-)4% m/m in services and a primary sector which could somewhat recover from the negative production in the previous three months (e. 7.6% m/m). W forecast growth of around 1.1% q/q in GDP for 1Q11, although with March output data known and April confidence and employment, we cannot rule out output adjustment having to a negative bias leading to a lower performance.

Chart 3
IGAE, SA
(Indices, 2003=100)



Source: BBVA Research and INEGI

Chart 4
GDP 1Q11: % change q/q, estimate



Source: BBVA Research and INEGI. Estimate based on current output indicators model.

Markets

MXN see a wide operating range but the liquidity factor is maintained meaning support could come at 11.55 based on US news

Last week, the MXN was in a wide operating range of 11.54-11.74 due to different external factors. On the one hand, most LatAm currencies were weaker in the face of greater monetary restrictions in other countries (China and the UK) and a slowdown in the global cycle. In turn, this led to a general fall in commodities prices. On the other, the European risk premium and news on another possible rescue package for Greece led to pressure on most risk assets. Nonetheless, the liquidity factor remained and, therefore, any news from the US would lead to support levels being sought on the market (11.55). We expect this to continue in the short-term. In this sense, and given the global outlook continues without clear directional dynamic, we forecast volatility to remain high in the near future.

Market Analysis

Macro LatAm Strategy
Chief Strategist
Octavio Gutiérrez Engelmann
ogutierrez3@bbva.bancomer.com
+5255 5621 9245

Fixed Income Analysis
Mexico/Brazil
Chief Strategist
Ociel Hernández
ohernandez@bbva.bancomer.com
+5255 5621 9616

Liliana Solís
liliana.solis@bbva.bancomer.com
+5255 5621 9877

FX Mexico // Brazil
Claudia Ceja
claudia.ceja@bbva.bancomer.com
+52 55 5621 9715

Credit Mexico
Chief Analyst
Edgar Cruz
edgar.cruz@bbva.bancomer.com
52 55 5621 9774

Technical Analysis
Alejandro Fuentes
afuentes@bbva.bancomer.com
+52 55 5621 9975

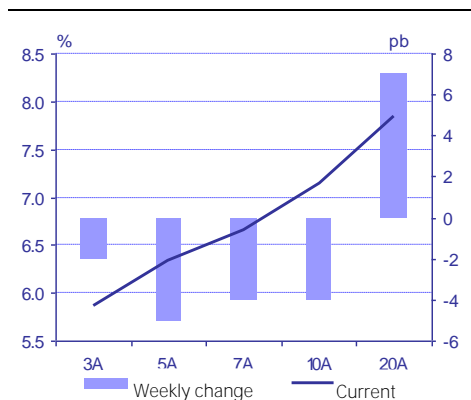
Downward move in the curve and increased curvature

The balance last week in the bond market showed an average 2bp downward move in the curve with higher movement in the medium part (see chart the 5-year bill saw a 5bp rally), although a sell bias remained in the long parts (see chart, 20-year increased 7bp). In turn, the curvature increased: the slope between 20/10 years came in at 11bp. The move is in line with US T-Bills, where the curve rose 2bp.

Reduction in risk premiums for some corporations after the Supreme Court's ruling on the telecoms sector

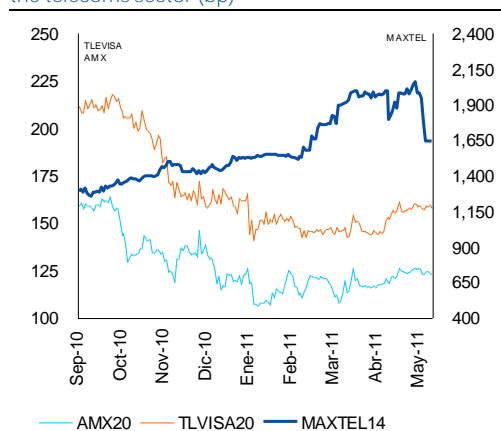
The risk premiums for some Mexican companies in the telecoms sector reduced after the Supreme Court refused the suspension of Cofetel actions. This means all interconnection resolutions this Commission sets when operators fail to reach an agreement will be applicable. This decision could directly lead to a higher operating cashflow for some companies in the sector which use the interconnection service of the large Mexican telcos.

Chart 5
Bond Yield Curve (% and bp)



Source: BBVA Research with data from Bloomberg

Chart 6
Corporate spreads in dollar-denominated bonds in the telecoms sector (bp)



Source: BBVA Research with data from Bloomberg

Market Analysis
Equities

Technical Analysis
Alejandro Fuentes Pérez (*)
afuentes@bbva.bancomer.com
+ 5255 5621 9705

(*) Writer(s) of the report

Technical Analysis

IPC Stock Market Index



IPC: The IPC ended the week around the psychological support level of 35,000 pts, while Amx operated slightly below P\$30.00. We continue to believe that a technical upswing could be seen from these levels in line with the lessons on overselling. If the market is not able to respect this support, the following floor would come in around 34,200 pts. This week's movement led to the spread between 10 and 30 day rolling averages on the IPC running to 1,000 pts. In the last 24 months, this spread level was only reached twice before. Both occasions saw major bounces.

Previous rec.: Although we cannot rule out a movement in the IPC towards 34,700/34,500 pts, we recommend taking positions that try to anticipate this upturn in the short term.

Source: BBVA, Bancomer, Bloomberg

MXN



Over the week it again came close to the P\$11.50 floor from where it bounced and managed to close above the 30-day rolling average (P\$11.66). This break leads to the possibility of a move toward P\$11.90 levels, while the support area comes in at P\$11.60, where the 10 and 30-day rolling averages converge.

Previous rec.: With the oscillators giving buy signals, we could expect an appreciation in the peso towards levels of MXN 11.50, where the new floor should be.

Source: BBVA, Bancomer, Bloomberg

3Y M BOND



3Y M BOND: (yield): Maintains its downward trend and is under its initial 5.6% support. In order to consider a technical bounce, it needs to break 5.7% and head toward 5.9%.

Previous rec.: The spread between the 10-day and 30-day rolling averages is still not so strong, so it may maintain its downward movement.

Source: BBVA, Bancomer, Bloomberg

10Y M BOND



10Y M BOND (yield): Reaches 7.2% and lateralizes move. Significant resistance comes in at 7.3% and only breaking this level would lead us to consider a trend change. Meanwhile, the following floor holds at 7%.

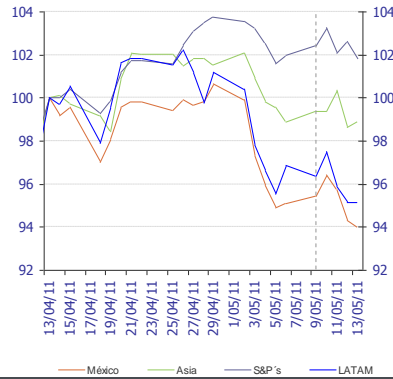
Previous rec.: We maintain short-term objectives at 7.2% and 7%.

Source: BBVA, Bancomer, Bloomberg

Markets

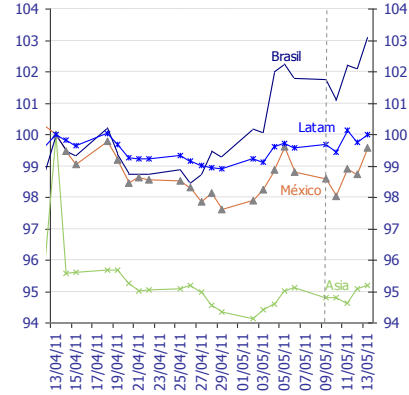
Stock markets saw falls in the face of speculation on a cooling in emerging nations' economies. The IPC was also influenced by the fall in América Móvil. LatAm currencies saw losses due to this speculation.

Chart 7
Stock Markets: MSCI Indices
(Apr 13, 2011 index = 100)



Source: Bloomberg & BBVA Research

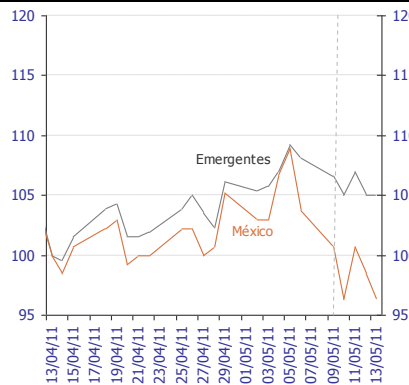
Chart 8
Foreign exchange: dollar exchange rates
(Apr 13, 2011 index = 100)



Source: Bloomberg and BBVA Research. Note: LATAM includes Argentina, Brazil, Chile, Colombia and Peru. Asia includes the Philippines, South Korea, Taiwan, Singapore, Indonesia and Thailand. Non-weighted averages

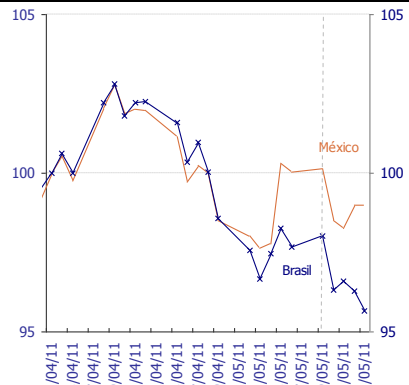
Marginal fall in risk aversion after the rumor of a Greek exit from the EU.

Chart 9
Risk: EMBI+ (Apr 13, 2011 index = 100)



Source: Bloomberg & BBVA Research

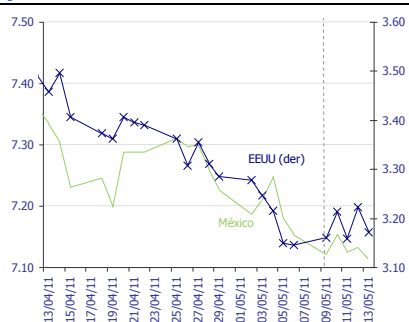
Chart 10
Risk: 5-year CDS (Apr 13, 2011 index=100)



Source: Bloomberg & BBVA Research

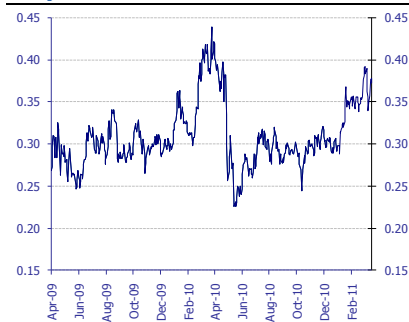
US and Mexican interest rates fell due to the possibility of global growth coming in lower.

Chart 11
10-year interest rates*, last month



Source: Bloomberg & BBVA Research

Chart 12
Carry-trade Mexico index (%)

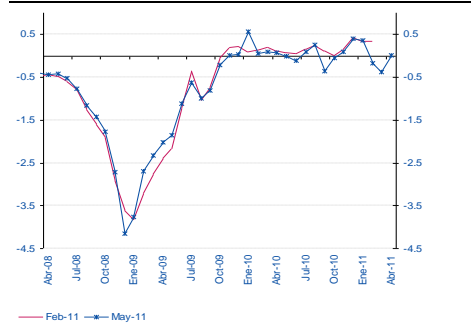


Source: BBVA Research with data from Bloomberg

Activity, inflation, monetary conditions

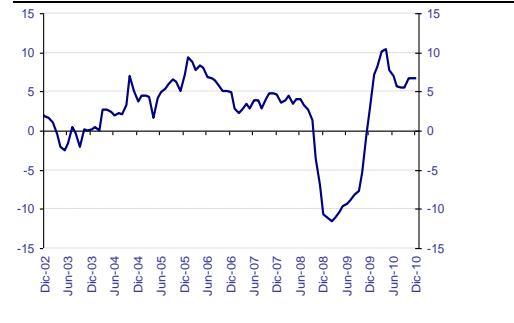
Activity continues to recover moderately, headed by industrial output and followed more slowly by the service sector

Chart 13
BBVA Research Synthetic Activity Indicator for the Mexican economy



Source: BBVA Research with data from INEGI, AMIA and BEA
Weighted sum of 21 different indicators of activity, expenditure and expectation, based on trend series.

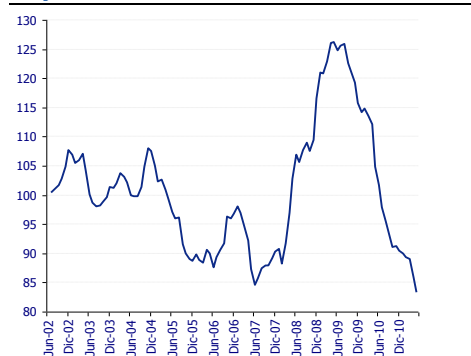
Chart 14
Advance Indicator of Activity (% y/y change)



Source: INEGI

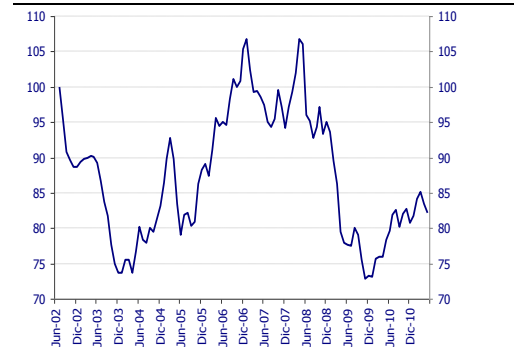
Surprises in inflation are biased downwards, while in activity, they are mildly upwards.

Chart 15
Inflation Surprise Index (July 2002=100)



Source: BBVA Research with data from Banxico from the monthly surveys on the expectations of economic specialists in the private sector.

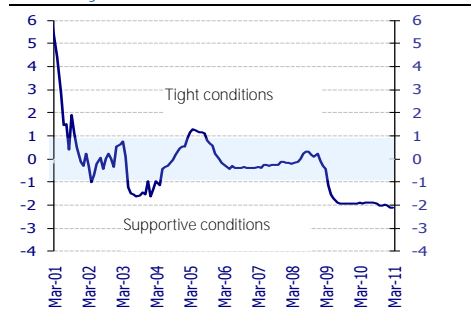
Chart 16
Activity Surprise Index (2002=100)



Source: BBVA Research with Bloomberg data. Difference between recorded data and the Bloomberg consensus for seven activity variables in Mexico. Standardized index. Rises (falls): positive (negative) surprises.

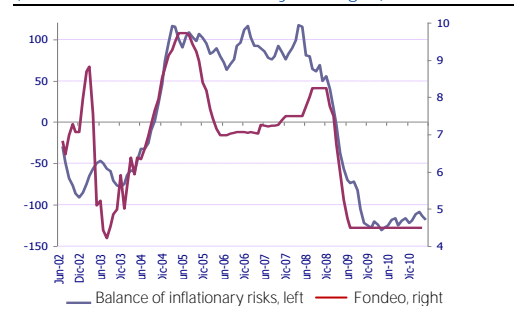
The monetary conditions have not changes and continue to be loose, although with a very slight deterioration in the balance of inflationary risks

Chart 17
Monetary Conditions Index



Source: BBVA Research

Chart 18
Balance of Inflationary Risks* and Lending Rate (standardized and %; monthly averages)



Source: BBVA Research. *Standardized, weighted index (between inflation and economic growth); uses economic indicators for activity and inflation. A rise in the index points to a greater weight of inflationary risks over growth risks and thus a greater possibility of monetary restriction

Important Disclosures

Analyst Certification

I, Moisés Junca, Claudia Ceja, Ociel Hernández, Liliana Solís, Alejandro Fuentes, Edgar Cruz y Octavio Gutiérrez Engelmann Perez, hereby certify that the views expressed in this research report accurately reflect my personal views about the mentioned corporation(s) and its (their) securities. I also certify that I have not been, am not, and will not be receiving direct or indirect compensation in exchange for any specific recommendation in this report.

Rating, target price and price history information for the companies that are the subject of this report are available at www.bancomer.com

Receipt of Compensation / Provision of Services current as of 4/19/11

Management or Co- Management of Public Offering. Within the past twelve months, BBVA Bancomer, S.A., Institución de Banca Múltiple, Grupo Financiero BBVA Bancomer ("BBVA Bancomer"), and/or its affiliates, have participated as manager or co-manager in public offerings, and received compensation for these services, of the company(ies), which is(are) the subject of this report: **Actinver, Banco Interacciones, Banco Inbursa, BNP, Bimbo, Cemex, Comisión Federal de Electricidad, Corporación Interamericana de Inversiones, Chedraui, Daimler, Embotelladoras Arca, El Puerto de Liverpool, Ferrocarril Mexicano, Fonacot, GE Capital Bank, General Electric, GMAC, Hipotecaria su Casita, Maxcom, Megacable, Nematik, NRF(Nissan), OHL, Paccar, Pemex, Posadas, Prudential Fiancial, Ruba, Telmex Internacional, Telefónica Móviles México, Toyota, Urbi, VWLease.**

Investment Banking Compensation. Within the past twelve months, BBVA Bancomer, and/or its affiliates, have received compensation for investment banking, common representation and credit related services from the Company/ies, which is(are) the subject of this report: **Acciona, Aeromexico, Agropecuaria Santa Genoveva, Asea, América Móvil, Asur, Avicola Pilgrim´s Pride de Mexico, Axtel, Bancomext, Banco de Credito e Inversiones, Banorte, BMV, Cemex, Cencosud, CIE, Cintra, Colbun, Comercial Mexicana, Comisión Federal de Electricidad, Concesionaria Mexiquense, Consorcio Comex, CAF, Controladora de Farmacias, Copamex, Coppel, Corporación Geo, Corporativo Arca, Corporación Moctezuma, Credito Inmobiliario, Daimler Chrysler de México, Dine, El palacio de Hierro, Elementia, Empresas Cablevisión, Endesa (Chile), Facileasing, Factoring Corporativo, Farmacias Benavides, FCC, Femsa, Ferrosur, Fomento de Infraestructura Turística Cancun, GEO, Gruma, Grupo Alfa, Grupo Ara, Grupo Brescia, Grupo Bimbo, Grupo Carso, Grupo Casa Saba, Grupo Cementos de Chihuahua (GCC), GAP, Grupo Comercial Chedraui, Grupo Collado, Grupo Comercial Gomo, Grupo Dermet, Grupo Elektra, Grupo Famsa, Grupo Femsa, Grupo Financiero Inbursa, Grupo R, Grupo Scotiabank, Grupo Herdez, Grupo ICA, Grupo La Moderna, GMAC, Grupo Maseca, Grupo México, Grupo Posadas, Grupo R, Grupo Sanborns, Grupo TMM, Grupo Videomax, Grupo Xignux, Hilasal Mexicana, Homex, HSBC, Holcim (Apasco), Hylsamex, Imsa/Tarida/Ternium, Industrias Bachoco, Hipotecaria Casa Mexicana, Hipotecaria su Casita, Industrias Aluprint, Industrias CH, Industrias Peñoles, Inmobiliaria Ruba, Interceramic, Kansas City Southern de México, Kaupthing Bank, Kimberly Clark México, Lamosa, Liverpool, Mabe, Manufacturas Kaltex, Medica Sur, Megacable, Mexichem, Minera los Pelambres, Molymet, Municipio de Aguascalientes, Nadro, Nafin, NRF México, Nematik, OHL, Paccar, Pasa, Pemex, Petrotemex, Pimsa, Plavicom, Prolec GE, Ruba, Sare, Sears, Sigma, Simec, Scotia Bank Inverlat, Techint, Telefónica CTC, Telefónica Móviles, Telint, Tenaris, Toyota, Urbi, Value, Volcan Cía Minera, VWLease.**

Expected Investment Banking and services Compensation. In the next three months, BBVA Bancomer, and/or any of its affiliates, expects to receive or intends to seek compensation for investment banking, common representation and credit related services from the company (ies) discussed in this report.

BBVA Bancomer acts as market maker/specialist in: **MexDer Contrato de Futuros (Dólar de Estados Unidos de América (DEUA), TIIE de 28 días (TE28), Swap de TIIE, CETES de 91 días (CE91)), Bonos M, Bonos M3, Bonos M10, Índice de Precios y Cotizaciones de la BMV (IPC), Contrato de Opciones (IPC, Acciones América Móvil, Cemex, CPO, Femsa UBD, Gcarso A1, Telmex L), Udibonos.**

BBVA acts as market maker/specialist in Latibex: **Alfa, AMX, Corporación Geo, Grupo Modelo, ICA, Sare, Telmex.**

BBVA Bancomer, is recognized by Mexico´s Finance Ministry as a market improver and acts as a market maker/specialists in MEXDER, Mercado Mexicano de Derivados.

Ownership Positions

BBVA Bancomer, and/or its affiliates holds, directly or indirectly, at least 1 % of the equity capital of the following company/ies whose shares are open to negotiation in organized markets and which is(are) the subject of this report: **BOLSA, CEMEX VENEZUELA, GAP, GRUPO TELEVISIA, GRUPO VIDEOVISA, MAXCOM TELECOMUNICACIONES, PASA.**

BBVA Bancomer, and/or its affiliates hold(s), directly or indirectly; as of the end of the last quarter, at least a 10 % of it´s investment portfolio, or 10% of the amount issued, of the securities or underlying investments issued by the companies which is(are) the subject of this report: **AXTEL.**

Other Disclosures

To the best of BBVA Bancomer´s knowledge, a Member of it´s Board, it´s CEO or Senior Manager holding a direct reporting position to BBVA Bancomer´s CEO holds a similar position in any of the following company/ies which is(are) the subject of this report: **Alfa, Alesa, Amx, Asur, Bimbo, CMR, Dine, Femsa, GAP, Gmodelo, Grupo financiero Inbursa, Grupo Carso, Grupo Posadas, Hogar, Invex, Kof, Kuo, Liverpool, Maseca, Oma, Peñoles, Sanborns Hermanos, Sears Roebuck, Telecom, Telefónica Móviles México, Telmex, Tenaris, Tlevisa, Urbi, Vitro.**

Additional Information and Disclaimer

Ratings and Price Targets

As of March 31, 2011, for the whole universe of companies which BBVA Bancomer, has under coverage there are **53%** Buy ratings (including "Buy" and "Outperform"), **4%** Neutral ratings and **43%** Sell ratings (including "Sell" and "Underperform"). BBVA Bancomer or any of its affiliates has rendered Investment Banking services or participated as manager and/or co-manager in public offerings in **57%** of the Buy ratings, **14%** of the Neutral ratings and in **29%** of the Sell ratings.

Ratings are set on a six-month or year-end basis against the relevant benchmark. BBVA Bancomer issues three equity recommendations: **Outperform:** Upside potential of more than 5% vs. the market. **Neutral:** Stock is expected to perform in line with the market (+/-5%). **Underperform:** Expected downside of at least 5% vs. the market.

Recommendations reflect the stock´s expected performance vs the market, within a specified period. This performance may be explained by the fundamental stock valuation method and other factors. The fundamental stock valuation method used by BBVA Bancomer S.A., is based on a combination of one or more generally accepted financial analysis methodologies, which may include, multiples, discounted cash flows, sum of parts or any other methodology that applies to the particular case. Notwithstanding other factors include newsflows, benefit timing, M & A´s and market´s appetite in a given sector. These factors can lead to a recommendation contrary to that indicated by the simple fundamental valuation results and its comparison with direct quotations.

This document and the information, opinions, estimates and recommendations expressed herein, have been prepared by BBVA Global Markets Research an affiliate of Banco Bilbao Vizcaya Argentaria, S.A. (BBVA) and/or BBVA Bancomer, to provide their or its customers with general information as of the date of the report and are subject to changes without prior notice. BBVA Bancomer is not liable for giving notice of such changes or for updating the contents hereof. This document and its contents do not constitute an offer, invitation or solicitation to purchase or subscribe to any securities or other instruments, or to undertake or divest investments. Neither shall this document nor its contents form the basis of any contract, commitment or decision of any kind. For more information please contact the persons included in the directory of this document.

The determination of a price target does not imply any warranty that it will be attained. For a discussion of the risks associated with the attainment of price targets, which depend on intrinsic and extrinsic factors that affect both the performance and trends prevailing in the market on which the recommended securities is traded and/or offered, please refer to our recently published documents, which are available via e-mail, contact our analysts or visit our internet site www.bancomer.com.

Investors who have access to this document should be aware that the securities, instruments or investments to which it refers may not be appropriate for them due to their specific investment goal, financial position or risk profile, for these have not been taken into account in the preparation of this report. Therefore, investors should make their own investment decisions considering the said circumstances and obtaining such specialized advice as may be necessary. Investors should note that the past performance of securities or instruments or the historical results of investments do not guarantee future performance. The market prices of securities or instruments or the results of investments could fluctuate against the interests of investors. Investors should be aware that they could even face a loss of their investment.

The contents of this document are based upon information available to the public that has been obtained from sources considered to be reliable. However, such information has not been independently verified by BBVA Bancomer, and therefore no warranty, either express or implicit, is given regarding its accuracy, integrity or correctness. BBVA Bancomer, accepts no liability of any type for any direct or indirect losses arising from the use of the document or its contents.

Investors should note that the past performance of securities or instruments or the historical results of investments do not guarantee future performance. The market prices of securities or instruments or the results of investments could fluctuate against the interests of investors. Investors should be aware that they could even face a loss of their investment.

Transactions in futures, options or high-yield securities can involve high risk and are not appropriate for every investor. Indeed, in the case of some investments, the potential losses may exceed the amount of the initial investment; in such circumstance, investors may be required to pay more money to support those losses. Thus, before undertaking any transaction with these instruments, investors should be aware of their characteristics, as well as the rights, liabilities and risks associated with these securities and their underlying investments. Investors should also be aware that secondary markets for the said instruments may be limited or may not exist.

BBVA Bancomer, or any of its affiliates, as well as their respective executives and employees, may have a position in any of the securities or instruments referred to, directly or indirectly, in this document, or in any other related thereto; they may trade for their own account or for third-party account in those securities, provide consulting or other services to the issuer of the aforementioned securities or instruments or to companies related thereto or to their shareholders, executives or employees, or may have interests or perform transactions in those securities or instruments or related investments before or after the publication of this report, to the extent permitted by the applicable law.

BBVA Bancomer BBVA Securities Inc., BBVA Brazil, BBVA Continental, BBVA Banco Frances, BBVA Chile or any affiliate of the BBVA Group, of its affiliates' salespeople, traders, and other professionals may provide oral or written market commentary or trading strategies to its clients that reflect opinions that are contrary to the opinions expressed herein. Furthermore, BBVA Bancomer or any of its affiliates' BBVA Securities Inc., BBVA Brazil, BBVA Continental, BBVA Banco Frances, BBVA Chile or any affiliate of the BBVA Group's proprietary trading and investment businesses may make investment decisions that are inconsistent with the recommendations expressed herein.

No part of this document may be (i) copied, photocopied or duplicated by any other form or means (ii); redistributed or forwarded; or (iii) quoted, without the prior written consent of BBVA Bancomer. No part of this report may be copied, conveyed, distributed or furnished to any person or entity in any country (or persons or entities in the same) in which its distribution is prohibited by law. Failure to comply with these restrictions may breach the laws of the relevant jurisdiction.

This document is provided in the United Kingdom solely to those persons to whom it may be addressed according to the Financial Services and Markets Act 2000 (Financial Promotion) Order 2001 and it is not to be directly or indirectly delivered to or distributed among any other type of persons or entities. In particular, this document is only aimed at and can be delivered to the following persons or entities (i) those outside the United Kingdom (ii) those with expertise regarding investments as mentioned under Section 19(5) of Order 2001, (iii) high net-worth entities; and (iv) any other person or entity under Section 49(1) of Order 2001 to whom the contents hereof can be legally revealed.

This document is being distributed for BBVA Bancomer in Singapore by Banco Bilbao Vizcaya Argentaria (BBVA), Singapore Branch purely as a resource and for general informational purposes only, and is intended for general circulation. Accordingly, this research document does not take into account the specific investment objectives, financial situation, or needs of any particular person and is exempted from the same by Regulation 34 of the Financial Advisers Regulations ("FAR") (as required under Section 27 of the Financial Advisers Act (Cap. 110) of Singapore ("FAA")).

Please note Banco Bilbao Vizcaya Argentaria (BBVA) is not an Authorised Deposit taking Institution within the meaning of the Banking Act 1959 nor is it regulated by the Australian Prudential Regulatory Authority (APRA).

The remuneration system concerning the analyst/s author/s of this report is based on multiple criteria, including the results obtained by BBVA Bancomer BBVA Securities Inc., BBVA Brazil, BBVA Continental, BBVA Banco Frances, BBVA Chile and by BBVA Group in the fiscal year, which, in turn, include the results generated by the investment banking business, common representation or credit related services; nevertheless, they do not receive any remuneration based on revenues from the mentioned areas or a specific transaction in investment banking, common representation or credit related services.

The information contained in this document should be taken only a general guide on matters that may be of interest. The application and impact of the laws may vary substantially depending on specific circumstances. Changes in regulations and the risks inherent in electronic communication may cause delays, omissions, or inaccuracy in the information contained in this site. Accordingly, the information contained in the site is supplied on the understanding that the authors and editors do not hereby intend to supply any form of consulting, legal, accounting or other advice. As such, it should not be considered a substitute for the direct advice provided by accounting and fiscal advisors or other competent consultants.

All images and texts and texts are the property of BBVA Bancomer and may not be downloaded from the Internet, distributed, stored, re-used, re-transmitted, modified or used in any way, except as specified in this document, without the express written consent of BBVA Bancomer. BBVA Bancomer reserves all intellectual property rights to the fullest extent of the law. None of the information contained herein may be interpreted as a concession by implication, exclusion or any other means, of any patent or brand of BBVA Bancomer or of any third party. Nothing established herein should be interpreted as a concession of any license or right under any BBVA Bancomer copyright.

BBVA Bancomer, as well as its executives and employees have adopted the Código de Conducta de Grupo Financiero BBVA Bancomer, which is available in our internet site www.bancomer.com.

BBVA Bancomer, BBVA and the entities of the BBVA Group, including BBVA Global Markets Research, are subject to BBVA Group Policy on Conduct in the Securities Markets. In each entity where the Group Conducts Businesses in the Security Markets, the Policy is supplemented with the Internal Standards of Conduct which, among other regulations, include rules to prevent and avoid conflicts of interests with the ratings given, including information barriers. The BBVA Group Code of Conduct for Security Market Operations is available for reference at the following web site: www.bbva.com / Corporate Governance / Conduct in the Securities Markets.

BBVA Bancomer is regulated by the Comisión Nacional Bancaria y de Valores.

"Banco Bilbao Vizcaya Argentaria S.A. (CE number AFR194) is regulated by the Hong Kong Monetary Authority and the Securities and Futures Commission in Hong Kong"

BBVA Bancomer BBVA Brazil, BBVA Continental, BBVA Banco Frances, BBVA Chile as well as other entities in the BBVA Group that are not members of the *FINRA* (Financial Industry Regulatory Authority), are not subject to the rules of disclosure affecting such members.

This material is being distributed into the United States in reliance on an exemption from broker-dealer registration under Rule 15a-6 of the Rules under the Securities Exchange Act of 1934. Any trades in the securities discussed in this report must be effected through a U.S. registered broker/dealer as we are not authorized to accept any order to effect trades in any security discussed in this report within the U.S.