

# Weekly Watch

Mexico

May 27, 2011

**Economic Analysis**

Ivan Martínez Urquijo  
ivan.martinez.2@bbva.bancomer.com

Arnoldo López Marmolejo  
arnoldo.lopez@bbva.bancomer.com

**Market Analysis**

Octavio Gutiérrez Engelmann  
o.gutierrez3@bbva.bancomer.com

## Next week...

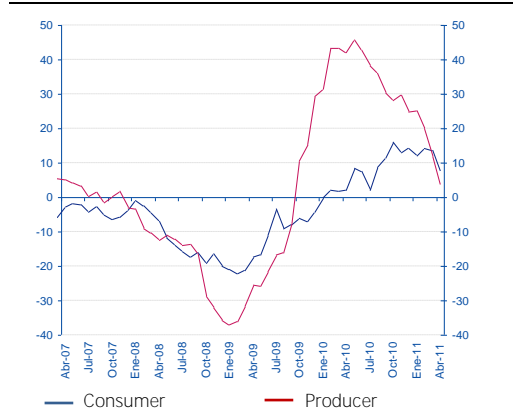
### Awaiting pointers on output performance in 2Q11

Information on producer and consumer confidence indicators for May is to be released this week. It will be especially important due to the negative surprise in both seen in April, particularly consumer confidence. We believe the moderation in private formal employment in April (0.2% m/m after seeing average growth rates of 0.4% m/m over the last 18 months) is a key factor providing pointers on the current moderation. In this sense, indicators such as the opportunity to purchase a durable good as well as the expected domestic and foreign demand level for products by companies will be variables to monitor closely. It should be stated that in April we should have seen some negative effect due to the tsunami in Japan on the Mexican automotive industry and employment which, added to the moderation in foreign demand indicators, mark a temporary downward bias in output in 2Q11, without going further than that.

### Greater risk aversion in the face of global uncertainty on the sustainability of the U.S. cycle and sovereign risk performance in Europe

In a week of concern about the economic cycle and sovereign debt, there was a bigger bias to risk aversion in markets and increased volatility. In an international context, there was softer language in the Banxico release which led to a strong rally in local bonds and a flattening out of the curve. On the exchange market, the USDMXN rate reversed losses at the end of the week and saw greater currency sensitivity to global factors on local events. Over the week, parity could fluctuate between 11.65 and 11.70.

Chart 1  
Confidence: consumer and producer (% change y/y)



Source: BBVA Research and INEGI

Chart 2  
MXN: FX and Implicit Volatility (ppd and 1%)



Source: BBVA Research and Bloomberg

## Calendar: Indicators

### Public Finances in April

On Monday, the SHCP will release the April Public Finance report, important information to see if there is a speeding up in budget revenue recovery which only grew a real 1.6% in the 1Q11. Factors more affecting income include the incipient growth in tax collection of barely 0.9% y/y in the 1Q11. This result was mainly due to a 3.5% y/y fall in VAT collection. Spending also slowed, increasing 2.7% y/y (3.6% y/y 2010), with the low growth in physical investment of 0.9% y/y standing out due to a -3.7% y/y decrease in direct investment. Decreased spending also had positive sides such as the -17.3% y/y reduction in public sector financing costs. Equity holdings continued to increase, albeit at a moderate rate of 3.7% (vs. 11.8% y/y in 2010). The incipient recovery in tax revenue meant total revenue is yet to reach pre-crisis levels. This year, however, will see benefits from higher oil revenue due to higher crude prices and platform stabilization. Despite this, there is concern that economic growth is not based more on increased tax income.

### National Construction Companies Survey

According to the National Construction Companies Survey (ENEC), the start of the year has seen mixed signals in construction: although in aggregate the negative trend running from mid-2008 to mid-2010 has reversed, there are still residuals and ups-and-downs in the components. On the building side, which contributes nearly 50% of industry output value, there was some move in housing and other private sector buildings (offices and industrial plants) but, in contrast, there was a slow start to the year in public works which put a stop to projects such as hospitals and transport works. In this way, a negative reading of the ENEC results for March (Monday 30) would not necessarily be a bad sign for the future. In a setting of economy recovery, surpluses in oil revenue and a coming election, spending on public works is likely to start to stabilize in the second quarter.

### Consumer Confidence in May

Forecast: 89.0	Consensus: 90.2	Previous: 89.3
----------------	-----------------	----------------

### Producer Confidence in May

Forecast: 54.8	Consensus: N.A.	Previous: 55.1
----------------	-----------------	----------------

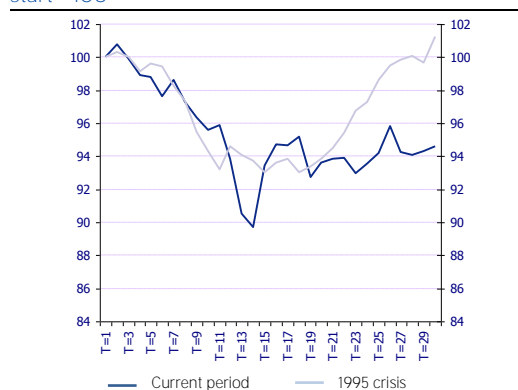
#### Economic Analysis

Pedro Uriz  
pedro.uriz@bbva.bancomer.com

Cecilia Posadas  
c.posadas@bbva.bancomer.com

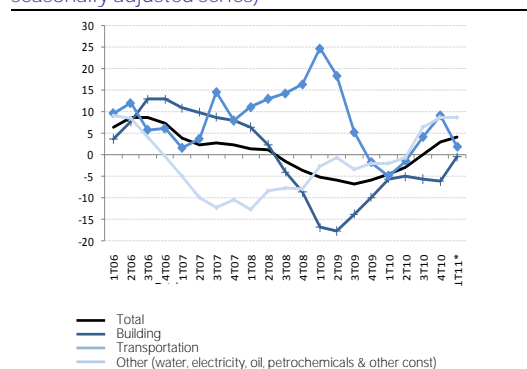
Eduardo Torres  
e.torres@bbva.bancomer.com

Chart 3  
Public revenue in a Crisis (1995 and 2008) recession start = 100



Source: BBVA Research with Banxico data and SHCP

Chart 4  
Construction: amount of output (annual % change seasonally adjusted series)



Source: BBVA Research and INEGI.

## Markets

The MXN closed the week with a slight gain, correctly losses from previous days and showing sensitivity to external risks

After starting last week with falls, the MXN closed the week with a slight strengthening and traded at levels near 11.61. This performance saw greater currency sensitivity to global factors on local events. Specifically, performance was set by by the sovereign risk premium in the Eurozone and by cyclical risk, mainly in the U.S. Despite the measures announced in Greece (budget cuts and privatizations), uncertainty remained about the possibility of a debt restructuring. In turn, there was a surprising fall in economic indicators in the U.S., so concerns remained regarding the global economic cycle which moderated at the end of the week after G-8 statements. In this context, US data on the non-farm payroll and the ISM could lead to a weakening in the MXN to the 11.65-11.70 range.

Gains in local bonds extended due to global factors and the possibility of a longer monetary pause.

The week was marked by higher cyclical risk premiums (with the release of weak US data) and sovereign debt in the Eurozone. This led to an increase in refuge asset demand. This was seen in the solid results for US T-Bill auctions and German Bunds, whose 10-year yields came in close to 3.05% and 3% respectively. Added to this in the international context was the announced inflation containment in the first fortnight of May, as well as a more *dovish* tone in the Banxico release (improved inflationary risk balance and moderate economic growth). This led to an increased likelihood of Banxico increasing its rate in the 1Q12 (93% in February 2012). The above led to a strong rally in local bonds and a flattening out of the curve over the week with higher movement in the long part over the short part of the curve. We continue to see a space for a rally in bonds.

### Market Analysis

Macro LatAm Strategy  
Chief Strategist  
Octavio Gutiérrez Engelmann  
ogutierrez3@bbva.bancomer.com  
+5255 5621 9245

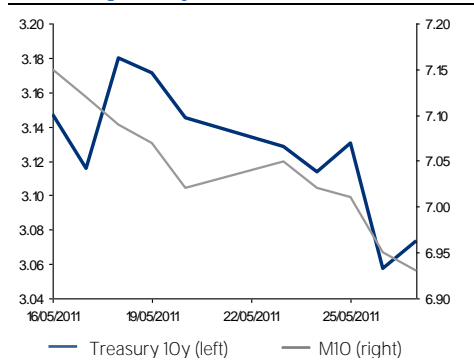
Fixed Income Analysis  
Mexico/Brazil  
Chief Strategist  
Ociel Hernández  
ohernandez@bbva.bancomer.com  
+5255 5621 9616

Liliana Solís  
liliana.solis@bbva.bancomer.com  
+5255 5621 9877

FX Mexico // Brazil  
Claudia Ceja  
claudia.ceja@bbva.bancomer.com  
+5255 5621 9715

Technical Analysis  
Alejandro Fuentes  
afuentes@bbva.bancomer.com  
+52 55 5621 9975

Chart 5  
Yield change in 10-year bonds: MX vs. U.S. (%)



Source: BBVA Research with data from Bloomberg

Chart 6  
MXN: FX and Implied Volatility (ppd and 1%)



Source: BBVA Research with data from Bloomberg

Market Analysis  
Equities

Technical Analysis  
Alejandro Fuentes Pérez (\*)  
afuentes@bbva.bancomer.com  
+ 5255 5621 9705

(\*) Writer(s) of the report

## Technical Analysis

### CPI Stock Market Index



CPI: This weekly gain sees the CPI return to levels near 36,000pts. There is major resistance in this zone with the 30 and 200-day rolling averages coming in there, as well as the short-term negative trend line under which the CPI has been trading since it started its fall at 38,000pts. Although the CPI could stop the bounce right at this level, especially if we take into account the US public holiday at the start of the week, we believe the market has a good chance of restarting the upward bounce in the coming week and trying to come in above this resistance level.

Previous rec.: The technical readings we commented on last week (high oversell, opening of over 1,000pts between 10 and 30-day rolling averages) remain present and the perspective of a short-term bull bounce remains valid.

Source: BBVA, Bancomer, Bloomberg

### MXN



For the second week in a row, the trading range came in at P\$11.60 / P\$11.80. This meant the over-purchased oscillating indicators slowly came close to the oversell zone. We believe that it should remain in this trading range in coming session with chances of moving downward and hitting P\$11.50.

Previous rec.: We believe it could again come close to the P\$11.50 zone to again try this floor.

Source: BBVA, Bancomer, Bloomberg

### 3Y M BOND

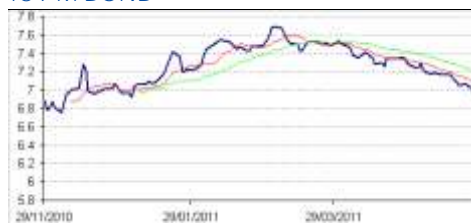


3 YEAR M BOND: (performance): Side move over the week but not enough to come in above short-term rolling averages. Support remains at 5.5%. A close above 5.75% would mean a change to an upward trend.

Previous re.: It may try floors at 5.55% and 5.51% - the 200-day rolling average level.

Source: BBVA, Bancomer, Bloomberg

### 10Y M BOND



10 YEAR M BOND: (performance): The downward move accentuates over the week, reaching the 6.9% support level. It would have to come in at least above 7.15%, the 10-day rolling average, to be able to consider an upward bounce.

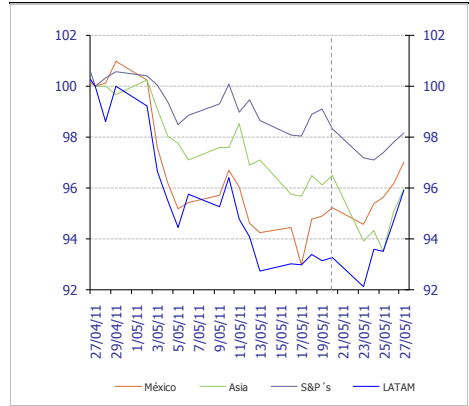
Previous rec.: A downward move remains with supports at 6.9% and 6.85% where the 200-day rolling average sits.

Source: BBVA, Bancomer, Bloomberg

Markets

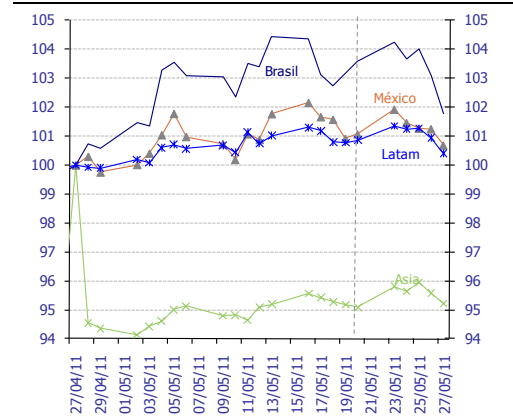
Higher recovery forecasts announced by the G8 and higher-than-expected consumer confidence data in the US generate upswings on share markets at the end of the week. As a consequence, the peso strengthens.

Chart 7  
Stock Markets: MSCI Indices  
(Apr 27, 2011 index = 100)



Source: Bloomberg & BBVA Research

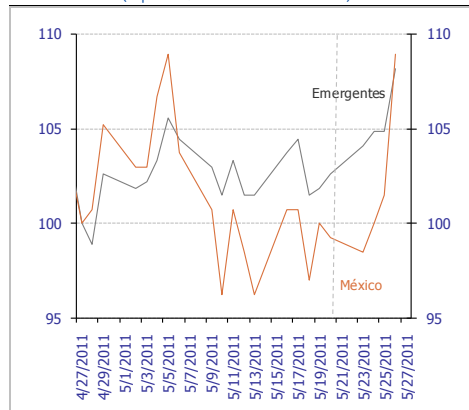
Chart 8  
Foreign exchange: dollar exchange rates  
(Apr 27, 2011 index = 100)



Source: Bloomberg and BBVA Research. Note: LATAM includes Argentina, Brazil, Chile, Colombia and Peru. Asia includes the Philippines, South Korea, Taiwan, Singapore, Indonesia and Thailand. Non-weighted averages

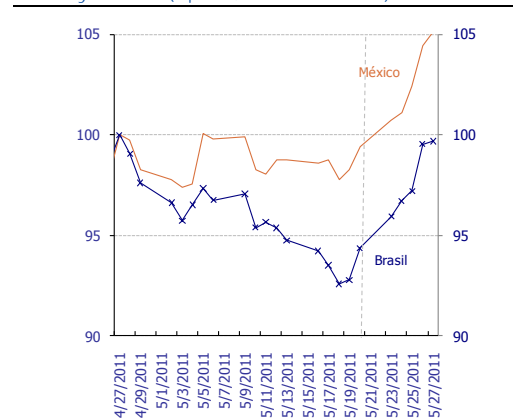
Risk indicators in Mexico were affected over the week by the Greek crisis and the fall in existing home sales and durable goods orders in the US to well-below forecasts.

Chart 9  
Risk: EMBI+ (Apr 27, 2011 index = 100)



Source: Bloomberg & BBVA Research

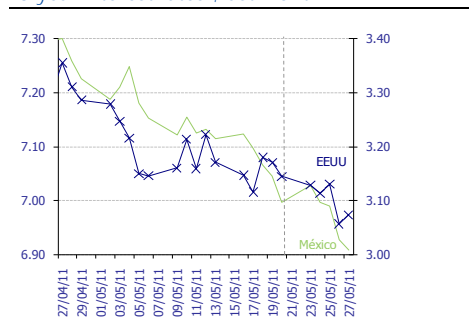
Chart 10  
Risk: 5-year CDS (Apr 27, 2011 index=100)



Source: Bloomberg & BBVA Research

US interest rates fall over the week due to an expected worsening of the situation in Greece. Rates in Mexico fall due to a perception that Banxico is set to maintain its monetary pause throughout 2011

Chart 11  
10-year interest rates\*, last month



Source: Bloomberg & BBVA Research

Chart 12  
Carry-trade Mexico index (%)



Source: BBVA Research with data from Bloomberg

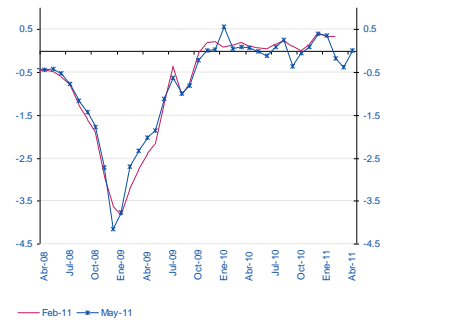
## Activity, inflation, monetary conditions

Output showed a moderation trend since the end of the 1Q11 linked to the negative effects of the tsunami in Japan and moderate foreign demand

There was a surprise downward move in latest inflation and output data. This means economic growth is still not causing price pressures.

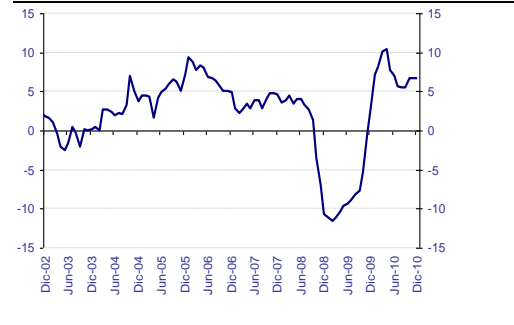
The monetary conditions have not changed and continue to be loose, with this loosening in fact increasing slightly in recent days.

Chart 13  
BBVA Research Synthetic Activity Indicator for the Mexican economy



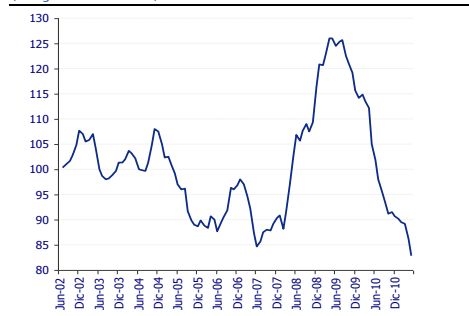
Source: BBVA Research with data from INEGI, AMIA and BEA  
Weighted sum of 21 different indicators of activity, expenditure and expectation, based on trend series.

Chart 14  
Advance Indicator of Activity (% y/y change)



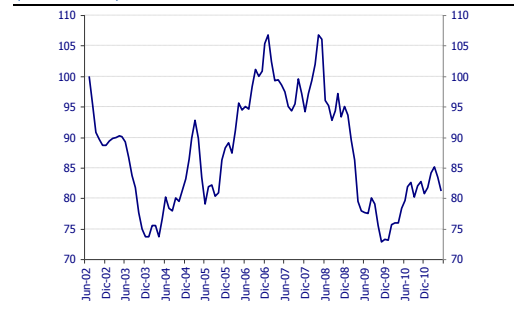
Source: INEGI

Chart 15  
Inflation Surprise Index (July 2002=100)



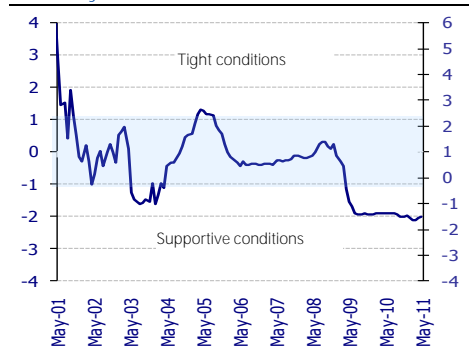
Source: BBVA Research with data from Banxico from the monthly surveys on the expectations of economic specialists in the private sector.

Chart 16  
Activity Surprise Index (2002=100)



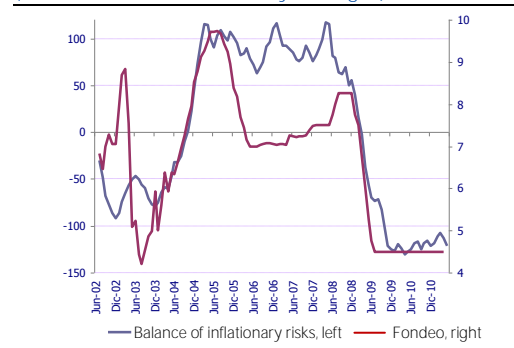
Source: BBVA Research with Bloomberg data. Difference between recorded data and the Bloomberg consensus for seven activity variables in Mexico. Standardized index. Rises (falls): positive (negative) surprises.

Chart 17  
Monetary Conditions Index



Source: BBVA Research

Chart 18  
Balance of Inflationary Risks\* and Lending Rate (standardized and %: monthly averages)



Source: BBVA Research. \*Standardized, weighted index (between inflation and economic growth); uses economic indicators for activity and inflation. A rise in the index points to a greater weight of inflationary risks over growth risks and thus a greater possibility of monetary restriction

## IMPORTANT DISCLOSURES

**Analysts' Certification**

I, Octavio Gutiérrez, Claudia Ceja, Ociel Hernández, Liliana Solis and Alejandro Fuentes Pérez: certify that the opinions expressed in this report reflect my own point of view regarding the issuers and their securities referred to. I also certify that I have not received, nor shall I receive, any direct or indirect compensation in exchange for a specific recommendation in this report.

Rating, target price and price history information for the companies that are the subject of this report are available at [www.bancomer.com](http://www.bancomer.com)

**Receipt of Compensation / Provision of Services current as of 5/16/11**

Management or Co- Management of Public Offering. Within the past twelve months, BBVA Bancomer, S.A., Institución de Banca Múltiple, Grupo Financiero BBVA Bancomer ("BBVA Bancomer"), and/or its affiliates, have participated as manager or co-manager in public offerings, and received compensation for these services, of the company(ies), which is(are) the subject of this report: Actinver, Banco Interacciones, Banco Inbursa, BNP, Bimbo, Cemex, Comisión Federal de Electricidad, Corporación Interamericana de Inversiones, Chedraui, Daimler, Embotelladoras Arca, El Puerto de Liverpool, Ferrocarril Mexicano, Fonacot, GE Capital Bank, General Electric, GMAC, Hipotecaria su Casita, Maxcom, Megacable, Nemak, NRF (Nissan), OHL, Paccar, Pemex, Posadas, Prudential Fiancial, Ruba, Telmex Internacional, Telefónica Móviles México, Toyota, Urbi, VWLease.

Investment Banking Compensation. Within the past twelve months, BBVA Bancomer, and/or its affiliates, have received compensation for investment banking, common representation and credit related services from the Company/ies, which is(are) the subject of this report: Acciona, Aeromexico, Agropecuaria Santa Genoveva, Alsea, América Móvil, Asur, Avicola Pilgrim's Pride de Mexico, Axtel, Bancomext, Banco de Credito e Inversiones, Banorte, BMV, Cemex, Cencosud, CIE, Cintra, Colbun, Comercial Mexicana, Comisión Federal de Electricidad, Concesionaria Mexiquense, Consorcio Comex, CAF, Controladora de Farmacias, Copamex, Coppel, Corporación Geo, Corporativo Arca, Corporación Moctezuma, Credito Inmobiliario, Daimler Chrysler de México, Dine, El palacio de Hierro, Elementia, Empresas Cablevisión, Endesa (Chile), Facileasing, Factoring Corporativo, Farmacias Benavides, FCC, Femsa, Ferrosur, Fomento de Infraestructura Turistica Cancun, GEO, Gruma, Grupo Alfa, Grupo Ara, Grupo Brescia, Grupo Bimbo, Grupo Carso, Grupo Casa Saba, Grupo Cementos de Chihuahua (GCC), GAP, Grupo Comercial Chedraui, Grupo Collado, Grupo Comercial Gomo, Grupo Dermat, Grupo Elektra, Grupo Famsa, Grupo Femsa, Grupo Financiero Inbursa, Grupo R, Grupo Scotiabank, Grupo Herdez, Grupo ICA, Grupo La Moderna, GMAC, Grupo Maseca, Grupo México, Grupo Posadas, Grupo R, Grupo Sanborns, Grupo TMM, Grupo Videomax, Grupo Xignux, Hilasal Mexicana, Homex, HSBC, Holcim (Apasco), Hylsamex, Imsa/Tarida/Ternium, Industrias Bachoco, Hipotecaria Casa Mexicana, Hipotecaria su Casita, ICA, Industrias Aluprint, Industrias CH, Industrias Peñoles, Inmobiliaria Ruba, Interceramic, Kansas City Southern de México, Kaupthing Bank, Kimberly Clark México, Lamosa, Liverpool, Mabe, Manufacturas Kaltex, Medica Sur, Megacable, Mexichem, Minera los Pelambres, Molytmet, Municipio de Aguascalientes, Nadro, Nafin, NRF México, Nemak, OHL, Paccar, Pasa, Pemex, Petrotemex, Pimsa, Plavicom, Prolec GE, Ruba, Sare, Sears, Sigma, Simec, Scotia Bank Inverlat, Techint, Telefónica CTC, Telefónica Móviles, Telint, Tenaris, Toyota, Urbi, Value, Volcan Cia Minera, VWLease.

Expected Investment Banking and services Compensation. In the next three months, BBVA Bancomer, and/or any of its affiliates, expects to receive or intends to seek compensation for investment banking, common representation and credit related services from the company (ies) discussed in this report.

BBVA Bancomer acts as market maker/specialist in: MexDer Contrato de Futuros (Dólar de Estados Unidos de América (DEUA), TIIE de 28 días (TE28), Swap de TIIE, CETES de 91 días (CE91)), Bonos M, Bonos M3, Bonos M10, Índice de Precios y Cotizaciones de la BMV (IPC), Contrato de Opciones (IPC, Acciones América Móvil, Cemex, CPO, Femsa UBD, Gcarso A1, Telmex L), Udibonos.

BBVA acts as market maker/specialist in Latibex: Alfa, AMX, Corporación Geo, Grupo Modelo, ICA, Sare, Telmex.

BBVA Bancomer, is recognized by Mexico's Finance Ministry as a market improver and acts as a market maker/specialists in MEXDER, Mercado Mexicano de Derivados.

## Ownership Positions

---

BBVA Bancomer, and/or its affiliates holds, directly or indirectly, at least 1 % of the equity capital of the following company/ies whose shares are open to negotiation in organized markets and which is(are) the subject of this report: BOLSA, CEMEX VENEZUELA, GAP, GRUPO TELEVISIA, GRUPO VIDEOVISA, MAXCOM TELECOMUNICACIONES, PASA.

BBVA Bancomer, and/or its affiliates hold(s), directly or indirectly; as of the end of the last quarter, at least a 10 % of it´s investment portfolio, or 10% of the amount issued, of the securities or underlying investments issued by the companies which is(are) the subject of this report: AXTEL.

## Other Disclosures

---

To the best of BBVA Bancomer´s knowledge, a Member of it´s Board, it´s CEO or Senior Manager holding a direct reporting position to BBVA Bancomer´s CEO holds a similar position in any of the following company/ies which is(are) the subject of this report: Alfa, Asea, Amx, Asur, Bimbo, CMR, Dine, Femsa, GAP, Gmodelo, Grupo financiero Inbursa, Grupo Carso, Grupo Posadas, Hogar, Invex, Kof, Kuo, Liverpool, Maseca, Oma, Peñoles, Sanborns Hermanos, Sears Roebuck, Telecom, Telefónica Móviles México, Telmex, Tenaris, Tlevisa, Urbi, Vitro.

## Additional Information and Disclaimer

---

### Ratings and Price Targets

As of March 31, 2011, for the whole universe of companies which BBVA Bancomer, has under coverage there are 53% Buy ratings (including "Buy" and "Outperform"), 4% Neutral ratings and 43% Sell ratings (including "Sell" and "Underperform"). BBVA Bancomer or any of its affiliates has rendered Investment Banking services or participated as manager and/or co-manager in public offerings in 57% of the Buy ratings, 14% of the Neutral ratings and in 29% of the Sell ratings.

Ratings are set on a six-month or year-end basis against the relevant benchmark. BBVA Bancomer issues three equity recommendations: Outperform: Upside potential of more than 5% vs. the market. Neutral: Stock is expected to perform in line with the market (+/-5%). Underperform: Expected downside of at least 5% vs. the market:

Recommendations reflect the stock´s expected performance vs the market, within a specified period. This performance may be explained by the fundamental stock valuation method and other factors. The fundamental stock valuation method used by BBVA Bancomer S.A., is based on a combination of one or more generally accepted financial analysis methodologies, which may include, multiples, discounted cash flows, sum of parts or any other methodology that applies to the particular case. Notwithstanding other factors include newsflows, benefit timing, M & A´s and market´s appetite in a given sector. These factors can lead to a recommendation contrary to that indicated by the simple fundamental valuation results and its comparison with direct quotations.

This document and the information, opinions, estimates and recommendations expressed herein, have been prepared by BBVA Global Markets Research an affiliate of Banco Bilbao Vizcaya Argentaria, S.A. (BBVA) and/or BBVA Bancomer, to provide their or its customers with general information as of the date of the report and are subject to changes without prior notice. BBVA Bancomer is not liable for giving notice of such changes or for updating the contents hereof. This document and its contents do not constitute an offer, invitation or solicitation to purchase or subscribe to any securities or other instruments, or to undertake or divest investments. Neither shall this document nor its contents form the basis of any contract, commitment or decision of any kind. For more information please contact the persons included in the directory of this document.

The determination of a price target does not imply any warranty that it will be attained. For a discussion of the risks associated with the attainment of price targets, which depend on intrinsic and extrinsic factors that affect both the performance and trends prevailing in the market on which the recommended securities is traded and/or offered, please refer to our recently published documents, which are available via e-mail, contact our analysts or visit our internet site [www.bancomer.com](http://www.bancomer.com).

Investors who have access to this document should be aware that the securities, instruments or investments to which it refers may not be appropriate for them due to their specific investment goal, financial position or risk profile, for these have not been taken into account in the preparation of this report. Therefore, investors should make their own investment decisions considering the said circumstances and obtaining such specialized advice as may be necessary. Investors should note that the past performance of securities or instruments or the historical results of investments do not guarantee future performance. The market prices of securities or instruments or the results of investments could fluctuate against the interests of investors. Investors should be aware that they could even face a loss of their investment.



The contents of this document are based upon information available to the public that has been obtained from sources considered to be reliable. However, such information has not been independently verified by BBVA Bancomer, and therefore no warranty, either express or implicit, is given regarding its accuracy, integrity or correctness. BBVA Bancomer, accepts no liability of any type for any direct or indirect losses arising from the use of the document or its contents.

Investors should note that the past performance of securities or instruments or the historical results of investments do not guarantee future performance. The market prices of securities or instruments or the results of investments could fluctuate against the interests of investors. Investors should be aware that they could even face a loss of their investment.

Transactions in futures, options or high-yield securities can involve high risk and are not appropriate for every investor. Indeed, in the case of some investments, the potential losses may exceed the amount of the initial investment; in such circumstance, investors may be required to pay more money to support those losses. Thus, before undertaking any transaction with these instruments, investors should be aware of their characteristics, as well as the rights, liabilities and risks associated with these securities and their underlying investments. Investors should also be aware that secondary markets for the said instruments may be limited or may not exist.

BBVA Bancomer, or any of its affiliates, as well as their respective executives and employees, may have a position in any of the securities or instruments referred to, directly or indirectly, in this document, or in any other related thereto; they may trade for their own account or for third-party account in those securities, provide consulting or other services to the issuer of the aforementioned securities or instruments or to companies related thereto or to their shareholders, executives or employees, or may have interests or perform transactions in those securities or instruments or related investments before or after the publication of this report, to the extent permitted by the applicable law.

BBVA Bancomer BBVA Securities Inc., BBVA Brazil, BBVA Continental, BBVA Banco Frances, BBVA Chile or any affiliate of the BBVA Group, of its affiliates' salespeople, traders, and other professionals may provide oral or written market commentary or trading strategies to its clients that reflect opinions that are contrary to the opinions expressed herein. Furthermore, BBVA Bancomer or any of its affiliates' BBVA Securities Inc., BBVA Brazil, BBVA Continental, BBVA Banco Frances, BBVA Chile or any affiliate of the BBVA Group's proprietary trading and investment businesses may make investment decisions that are inconsistent with the recommendations expressed herein.

No part of this document may be (i) copied, photocopied or duplicated by any other form or means (ii); redistributed or forwarded; or (iii) quoted, without the prior written consent of BBVA Bancomer. No part of this report may be copied, conveyed, distributed or furnished to any person or entity in any country (or persons or entities in the same) in which its distribution is prohibited by law. Failure to comply with these restrictions may breach the laws of the relevant jurisdiction.

This document is provided in the United Kingdom solely to those persons to whom it may be addressed according to the Financial Services and Markets Act 2000 (Financial Promotion) Order 2001 and it is not to be directly or indirectly delivered to or distributed among any other type of persons or entities. In particular, this document is only aimed at and can be delivered to the following persons or entities (i) those outside the United Kingdom (ii) those with expertise regarding investments as mentioned under Section 19(5) of Order 2001, (iii) high net-worth entities; and (iv) any other person or entity under Section 49(1) of Order 2001 to whom the contents hereof can be legally revealed.

This document is being distributed for BBVA Bancomer in Singapore by Banco Bilbao Vizcaya Argentaria (BBVA), Singapore Branch purely as a resource and for general informational purposes only, and is intended for general circulation. Accordingly, this research document does not take into account the specific investment objectives, financial situation, or needs of any particular person and is exempted from the same by Regulation 34 of the Financial Advisers Regulations ("FAR") (as required under Section 27 of the Financial Advisers Act (Cap. 110) of Singapore ("FAA")).

Please note Banco Bilbao Vizcaya Argentaria (BBVA) is not an Authorised Deposit taking Institution within the meaning of the Banking Act 1959 nor is it regulated by the Australian Prudential Regulatory Authority (APRA).

The remuneration system concerning the analyst/s author/s of this report is based on multiple criteria, including the results obtained by BBVA Bancomer BBVA Securities Inc., BBVA Brazil, BBVA Continental, BBVA Banco Frances, BBVA Chile and by BBVA Group in the fiscal year, which, in turn, include the results generated by the investment banking business, common representation or credit related services; nevertheless, they do not receive any remuneration based on revenues from the mentioned areas or a specific transaction in investment banking, common representation or credit related services.

The information contained in this document should be taken only a general guide on matters that may be of interest. The application and impact of the laws may vary substantially depending on specific circumstances. Changes in regulations and the risks inherent in electronic communication may cause delays, omissions, or inaccuracy in the information contained in this site. Accordingly, the information contained in the site is supplied on the understanding that the authors and editors do not hereby intend to supply any form of consulting, legal, accounting or other advice. As such, it should not be considered a substitute for the direct advice provided by accounting and fiscal advisors or other competent consultants.

All images and texts and texts are the property of BBVA Bancomer and may not be downloaded from the Internet, distributed, stored, re-used, re-transmitted, modified or used in any way, except as specified in this document, without the express written consent of BBVA Bancomer. BBVA Bancomer reserves all intellectual property rights to the fullest extent of the law. None of the information contained herein may be interpreted as a concession by implication, exclusion or any other means, of any patent or brand of BBVA Bancomer or of any third party. Nothing established herein should be interpreted as a concession of any license or right under any BBVA Bancomer copyright.

BBVA Bancomer, as well as its executives and employees have adopted the Código de Conducta de Grupo Financiero BBVA Bancomer, which is available in our internet site [www.bancomer.com](http://www.bancomer.com).

BBVA Bancomer, BBVA and the entities of the BBVA Group, including BBVA Global Markets Research, are subject to BBVA Group Policy on Conduct in the Securities Markets. In each entity where the Group Conducts Businesses in the Security Markets, the Policy is supplemented with the Internal Standards of Conduct which, among other regulations, include rules to prevent and avoid conflicts of interests with the ratings given, including information barriers. The BBVA Group Code of Conduct for Security Market Operations is available for reference at the following web site: [www.bbva.com](http://www.bbva.com) / Corporate Governance / Conduct in the Securities Markets.

BBVA Bancomer is regulated by the Comisión Nacional Bancaria y de Valores.

**“Banco Bilbao Vizcaya Argentaria S.A. (CE number AFR194) is regulated by the Hong Kong Monetary Authority and the Securities and Futures Commission in Hong Kong”**

BBVA Bancomer BBVA Brazil, BBVA Continental, BBVA Banco Frances, BBVA Chile as well as other entities in the BBVA Group that are not members of the *FINRA* (Financial Industry Regulatory Authority), are not subject to the rules of disclosure affecting such members.

This material is being distributed into the United States in reliance on an exemption from broker-dealer registration under Rule 15a-6 of the Rules under the Securities Exchange Act of 1934. Any trades in the securities discussed in this report must be effected through a U.S. registered broker/dealer as we are not authorized to accept any order to effect trades in any security discussed in this report within the U.S.