

Weekly Watch

Asia

3 June 2011
Economic Analysis

Asia
Stephen Schwartz
stephen.schwartz@bbva.com.hk

Mario Nevares
mario.nevares@bbva.com.hk

Fielding Chen
fielding.chen@bbva.com.hk

Le Xia
xia.le@bbva.com.hk

Jenny Zheng
jenny.zheng@bbva.com.hk

Serena Wang
serena.wang@bbva.com.hk

Zhigang Li
zhigang.li@bbva.com.hk

Sumedh Deorukhkar
sumedh.deorukhkar@grupobbva.com

Markets
Richard Li
richard.li@bbva.com.hk

Mario Nevares
mario.nevares@bbva.com.hk

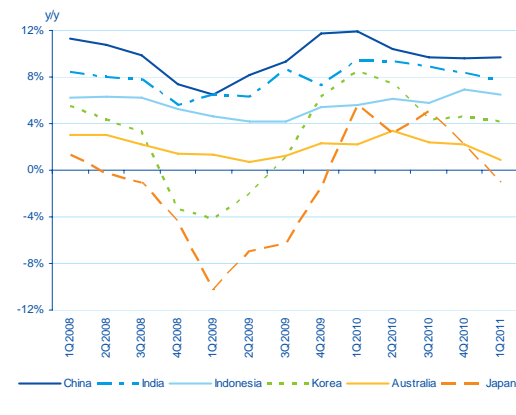
Growth moderating amidst high inflation

As flagged in recent publications (*Asia Outlook*), we have been expecting a slowdown in Asia's growth momentum on headwinds from rising oil prices, supply disruptions in Japan, and financial market tensions in Europe. Recent indicators bear this out. Industrial production in Korea and PMI in China (Highlights) point to moderating trends, and first quarter GDP in India disappointed to the downside (Chart 1). That said, we expect the slowdown to be temporary, confined mainly to the second quarter, and it could provide some welcome relief from overheating pressures. Nevertheless growth figures remain strong, as does inflation which, in spite of some easing, is still above target ranges in most economies. To counter inflation pressures, the Thai authorities raised interest rates this past week for a fourth time this year, to 3.0% (Chart 2).

Slowing momentum

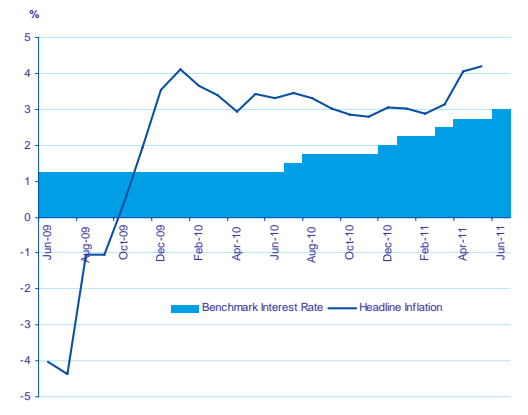
First quarter GDP in India edged down to 7.8% y/y, from 8.2% in the previous quarter, and lower than expectations (Highlights). Meanwhile, Australia's economy shrank -1.2% (q/q), in line with expectations (consensus: -1.1% q/q) while the Philippines grew by a lower-than-expected 4.9% (consensus: 5.4%) from a previous 7.1%. Elsewhere in the region, inflation quickened, including in Thailand, Korea, and Indonesia.

Chart 1
First quarter GDP outturns where strong, though moderating in a few cases



Source: BBVA Research and Bloomberg

Chart 2
Thailand hikes interest rates again



Source: BBVA Research and Bloomberg

Highlights

- Markets →
- Highlights →
- Calendar →
- Markets Data →
- Charts →

China: Moderation in May PMI

The latest PMI outturn signals a healthy slowdown

India: first quarter GDP growth eases below 8% y/y

Growth is slowing in India, but we expect more interest rate hikes to counter inflation

Hong Kong banks to undergo stress tests

The HKMA is keeping a watchful eye on rapid credit growth

Economic Analysis

Richard Li
richard.li@bbva.com.hk

Mario Nevares
mario.nevares@bbva.com.hk

Markets

Concerns over global growth slowdown and Greek debt default battered stock markets, with regional index broadly lower compared to previous week close, driving it index to its longest string of weekly losses since October 2008. In FX markets, tentative signs of labor market sluggishness reinforced expectation that the Fed may keep its ultra-loose monetary policy for longer. As such, the USD index ended lower by 2.1%, allowing most Asian currencies to post modest gains against the USD this week.

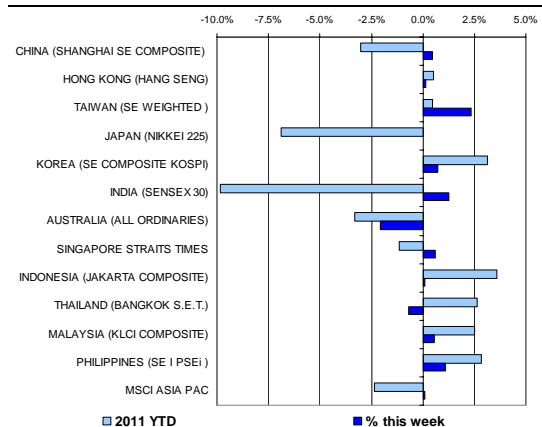
Markets Preoccupied by Moderating Growth Outlook

Data out of the region broadly suggested slower growth momentum in the second quarter, which fell in line with the moderation trend in global PMI. As markets shifted attention from growth to inflation, government yields in major Asian bond markets fell and bond swap spreads were tighter. Markets appeared to start pricing out some rate hikes expected this year and next, despite elevated inflation. It seems to us the market has over-reacted on one-month observations. Second-quarter setback could be temporary, as highlighted in our Quarterly Report. As long as Asia could resume growth in the second half of the year, Asian central banks will have to tighten policy to keep inflation expectation anchored. Take Korea as an example. While CPI for May fell slightly, it was still 100 bps well above the BoK's mid-target of 3.0%. Moreover, core inflation continued to edge up, and slacks in the labor markets are fairly limited. We see needs for the BoK to hike rates gradually to keep inflation at bay, and will likely to deliver this month.

Data Shows Foreign Buying of Asia's Fixed Income Remains Strong

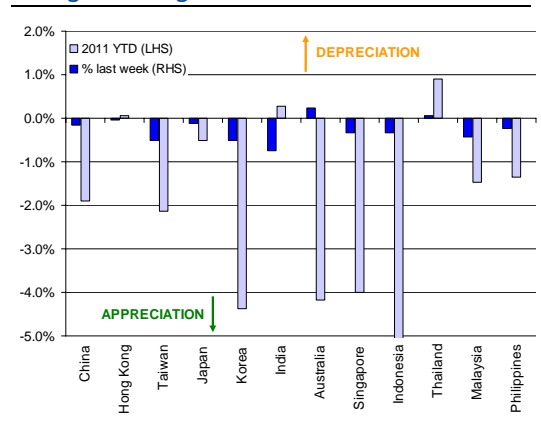
Latest data on foreign holdings of bonds in Malaysia and Indonesia showed that foreign investors continued to add Asian bonds to their fixed income portfolio. Total holdings in Malaysia climbed from MYR 146.8 bn in March to MYR 173.1 bn in April. In Indonesia, foreign investors bought IDR4.5 trillion government bond in May, bringing the total sum to IDR226 trillion. Demand remained strong, supporting the latest forecast upgrade by IIF on capital flows to emerging markets. Higher yields and strong fundamentals that stand in sharp contrast with US and many debt-ridden European countries world may have underpinned demand. Better growth dynamics coupled with strong capital flows will continue to support Asian currency appreciation trend in the medium term in our view.

Chart 3
Stock markets



Source: BBVA Research and Bloomberg

Chart 4
Foreign exchange markets



Source: BBVA Research and Bloomberg

Highlights

China: Moderation in May PMI heralds a healthy trend toward a soft landing

China's Purchasing Manager Index (PMI) for May further declined to 52.0% from 52.9% in April, in line with our expectations, but slightly higher than market consensus (BBVA: 51.9%; consensus: 51.6%). The outturn was the third straight monthly decline from March. Encouragingly, the trend of moderation continues to be mild, indicating that the probability of an abrupt slowdown (or "hard landing") is quite small. That said, the PMI is still within the expansion zone (+50). Almost all the main subcomponents (including production, new orders, employment, supplier delivery and raw material inventory) declined from the previous month, to varying degrees. In particular, new orders (with a weight of 30%) and raw materials inventory (10%) declined by 1.7 and 2.5 percentage points respectively. The decline in the latter suggests that firms have begun to destock. The outturn should help reinforce investors' confidence that China can achieve a soft-landing, as the authorities continue seeking to avert overheating and tame inflation through monetary tightening. Our full-year GDP growth forecast remains 9.4%, consistent with a soft-landing base scenario. On the policy front, we anticipate further gradual monetary tightening in the form of interest rate hikes and increases in the required reserve ratio (RRR) in the months ahead.

India: First quarter GDP growth eases below 8% y/y

Growth surprises in 1Q11 across many Asian economies have been significantly positive. In this context, data released this past week shows India to be an exception, with real GDP growth easing to 7.8 % y/y (below consensus of 8.2% y/y), and from 8.3% in 4Q10. The latest outturn is still one of the highest across among the world's fast-growing emerging market economies, and is still in line with our expectations of a stable trend growth rate of 8.1% y/y for all of 2011. On a seasonally adjusted basis, we estimate that GDP grew 2.4% q/q from a 0.11% fall in 4Q10. The moderation was mainly driven by a significant pullback in investment activity (+0.4% y/y vs. +7.8% in 4Q10), led by supply bottlenecks such as project disputes and delays, parliamentary indecision and governance issues. A tightening policy stance amidst rising price pressures coupled with high and volatile global commodity prices also weighed on investment sentiment. Growth was buoyed by still-strong consumption demand (+8.0% y/y in 1Q11) led by rising income levels, along with pent-up government expenditure. Meanwhile, the strong global industrial cycle in 1Q11 boosted export growth (+25% y/y). Consumption and net exports together contributed 83% of GDP growth in 1Q11. From a supply perspective, growth continued to be led by the services sector, while industrial growth was dragged down due by sluggish investment activity. Agriculture GDP posted reasonable gains (+7.5% y/y), driven by a favorable base effects and bumper winter crop produce. Notwithstanding the ongoing growth moderation, we maintain our view of another 50 bps rate hike in 2011 as the RBI remains focused on containing high inflation, even at the cost of sacrificing some near term growth.

Hong Kong banks to undergo stress tests

On concerns of rapid credit growth, the Hong Kong Monetary Authority (HKMA) at the end of May imposed a requirement on commercial banks to undergo stress tests to gauge their ability to weather a potential outflow of liquidity. The stress scenarios are expected to be based on an assumed capital outflow amounting to half of HK\$ 1.38 trillion in customer deposits over a six-to-twelve month horizon. This move reflects the authorities' increasing awareness of potential risks of fast credit expansion since mid-2010. By end-March, the local currency loan-to-deposit ratio for Hong Kong banks had reached about 82%, compared to 71% in early 2010 (the ratio reached 90-100% in some smaller banks). The increase in the ratio is mainly due to (1) a surge in lending to mainland Chinese companies as China undergoes domestic credit tightening, (2) strong domestic demand for mortgages under a low interest rate environment, and (3) slow growth in HKD deposits as depositors increasingly switch to higher yielding foreign currencies, including Renminbi (RMB) deposits, which have almost tripled since last August and accounted for 7.6% of total bank deposits in Hong Kong as of April.

[Home](#) →

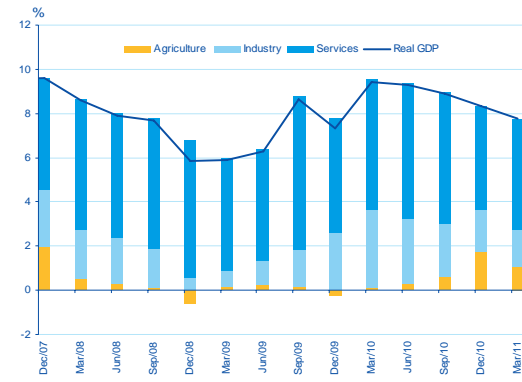
[Markets](#) →

[Calendar](#) →

[Markets Data](#) →

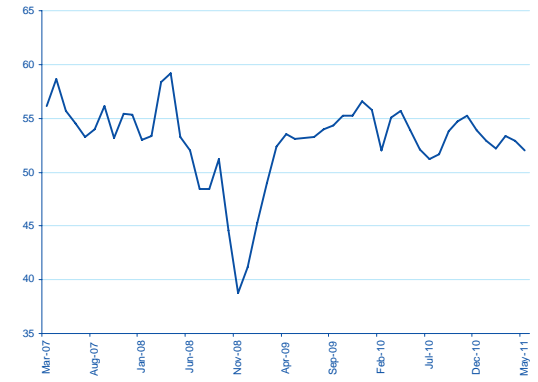
[Chart](#) →

Chart 5
India's first quarter GDP eases



Source: BBVA Research and Bloomberg

Chart 6
China's PMI signals a healthy moderation



Source: BBVA Research and Bloomberg

Calendar Indicators

Australia	Date	Period	Prior	Cons.
Unemployment Rate	09-Jun	MAY	4.90%	--
China	Date	Period	Prior	Cons.
Trade Balance (USD)	10-Jun	MAY	\$11.42B	\$17.00B
Exports YoY%	10-Jun	MAY	29.90%	21.80%
Imports YoY%	10-Jun	MAY	21.80%	22.30%
Actual FDI (YoY)	10-15 JUN	MAY	15.20%	--
Indonesia	Date	Period	Prior	Cons.
Money Supply - M2 (YoY)	07-10 JUN	APR	16.00%	--
India	Date	Period	Prior	Cons.
Industrial Production YoY	10-Jun	APR	7.30%	--
Japan	Date	Period	Prior	Cons.
Japan Money Stock M2 YoY	08-Jun	MAY	2.70%	2.70%
Adjusted Current Account Total	08-Jun	APR	¥752.7B	¥266.0B
Current Account Balance YOY%	08-Jun	APR	-34.30%	-83.50%
Trade Balance - BOP Basis	08-Jun	APR	¥240.3B	-¥379.0B
Machine Tool Orders (YoY)	09-Jun	MAY P	32.30%	--
Malaysia	Date	Period	Prior	Cons.
Industrial Production YoY	09-Jun	APR	2.40%	--
Manufacturing Sales Value YoY%	09-Jun	APR	14.10%	--
Philippines	Date	Period	Prior	Cons.
Consumer Price Index (YoY)	07-Jun	MAY	4.50%	5.00%
Total Exports (YoY)	10-Jun	APR	4.00%	--
Korea	Date	Period	Prior	Cons.
South Korea Money Supply M2	09-Jun	APR	4.30%	--
Producer Price Index (YoY)	10-Jun	MAY	6.80%	--
Taiwan	Date	Period	Prior	Cons.
CPI YoY%	07-Jun	MAY	1.34%	1.60%
Total Trade Bal in US\$ Billion	08-Jun	MAY	\$2.96B	\$2.53B
Total Exports (YoY)	08-Jun	MAY	24.60%	7.40%
Total Imports (YoY)	08-Jun	MAY	25.70%	11.10%
Vietnam	Date	Period	Prior	Cons.
Domestic Vehicle Sales (YoY)	6-10 JUN	MAY	-2.60%	--

Indicator of the Week: India Industrial Production for April (June 10)

Forecast: 5.5% y/y Consensus: not available yet Prior: 7.3% y/y

Comment: India has been an example in Asia of moderating growth trends. In a surprising outturn, however, India's industrial production (IP) growth rebounded in March, raising the question whether the slowdown has bottomed out. In this regard, April IP will be important, although the index is notoriously volatile. We expect growth to remain steady in April, supported by robust exports, consumption demand, inventory restocking and higher infrastructure output. Market impact: A lower outturn would dent sentiment, and reduce expectations of aggressive interest rate hikes.

Home →

Markets →

Highlights →

Markets Data →

Charts →

Calendar Events

Australia - RBA Cash Target, June 7

We expect no change in the interest rates

Current	Expected
4.75%	4.75%

Indonesia - Bank Indonesia Reference Rate, June 9

We expect no change in the interest rates

Current	Expected
6.75%	6.75%

Korea - Monetary Policy Meeting, 7-Day Repo Rate, June 10

We expect a hike of 25 bp in the 7-Day Repo Rate

Current	Expected
3.00%	3.25%

Markets Data

STOCK MARKETS	INDEX	Last price	% change over a week	Year to date	% Change over 1 Y
	China - Shanghai Comp.	2722.3	0.5	-3.1	6.6
	Hong Kong - Hang Seng	23152.6	0.1	0.5	17.0
	Taiwan - Weighted	9016.2	2.3	0.5	22.5
	Japan - Nikkei 225	9524.2	0.0	-6.9	-3.9
	Korea - Kospi	2115.5	0.7	3.1	27.3
	India - Sensex 30	18494.2	1.2	-9.8	8.6
	Australia - SPX/ASX 200	4587.6	-2.1	-3.3	2.3
	Singapore - Strait Times	3153.9	0.6	-1.1	12.9
	Indonesia - Jakarta Comp	3833.8	0.0	3.5	40.2
	Thailand - SET	1059.8	-0.7	2.6	38.4
	Malaysia - KLCI	1557.2	0.6	2.5	20.3
	Philippines - Manila Comp.	4320.4	1.1	2.8	28.8

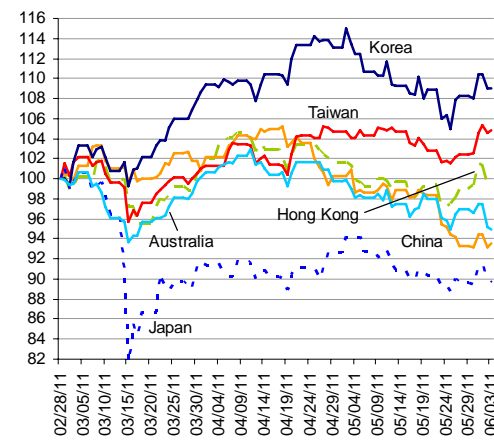
Last update: Friday, 11.15 Hong Kong time.

FOREIGN EXCHANGE MARKETS	CURRENCY	Spot	% change over a week	Forward 3-month	Forward 12-month
	China (CNY/USD)	6.48	0.15	6.46	6.36
	Hong Kong (HKD/USD)	7.78	0.03	7.8	8
	Taiwan (TWD/USD)	28.7	0.52	28.50	27.90
	Japan (JPY/USD)	80.7	0.10	80.7	80.4
	Korea (KRW/USD)	1077	0.51	1083.36	1098.36
	India (INR/USD)	44.8	1.07	45.5	47
	Australia (USD/AUD)	1.07	-0.26	1	n.a.
	Singapore (SGD/USD)	1.23	0.33	1.23	1.2
	Indonesia (IDR/USD)	8537	0.33	8619	8898
	Thailand (THB/USD)	30.3	-0.07	30.50	30.9
	Malaysia (MYR/USD)	3.02	0.42	3.0	3
	Philippines (PHP/USD)	43.2	0.23	43.26	41.98

Last update: Friday, 11.15 Hong Kong time.

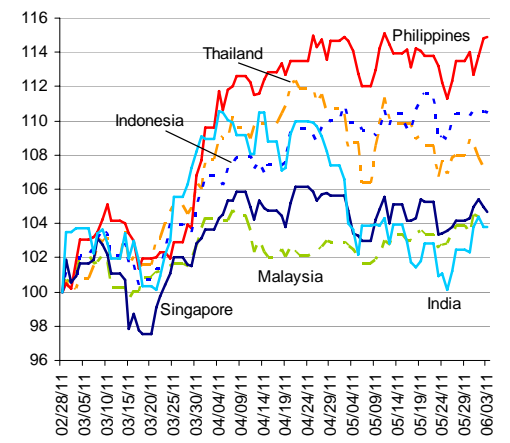
Charts

Chart 6
Stock Markets



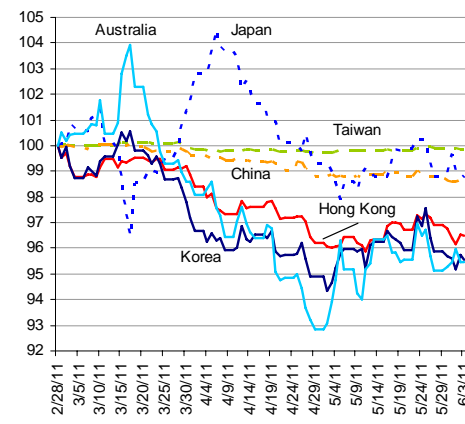
Source: BBVA Research and Bloomberg

Chart 7
Stock Markets



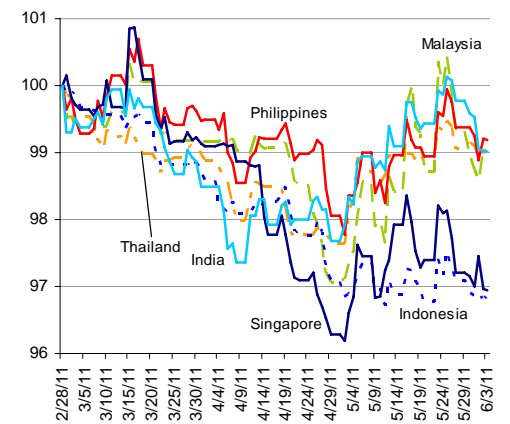
Source: BBVA Research and Bloomberg

Chart 8
Foreign Exchange Markets



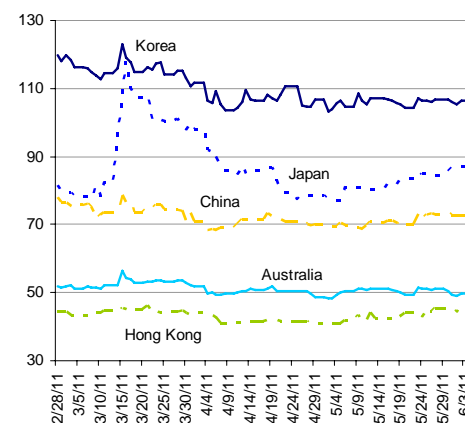
Source: BBVA Research and Bloomberg

Chart 9
Foreign Exchange Markets



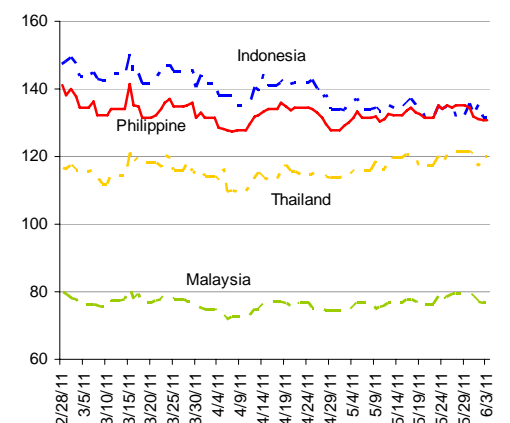
Source: BBVA Research and Bloomberg

Chart 10
Credit Default Swaps



Source: BBVA Research and Bloomberg

Chart 11
Credit Default Swaps



Source: BBVA Research and Bloomberg

DISCLAIMER

This document and the information, opinions, estimates and recommendations expressed herein, have been prepared by Banco Bilbao Vizcaya Argentaria, S.A. (hereinafter called "BBVA") to provide its customers with general information regarding the date of issue of the report and are subject to changes without prior notice. BBVA is not liable for giving notice of such changes or for updating the contents hereof.

This document and its contents do not constitute an offer, invitation or solicitation to purchase or subscribe to any securities or other instruments, or to undertake or divest investments. Neither shall this document nor its contents form the basis of any contract, commitment or decision of any kind.

Investors who have access to this document should be aware that the securities, instruments or investments to which it refers may not be appropriate for them due to their specific investment goals, financial positions or risk profiles, as these have not been taken into account to prepare this report. Therefore, investors should make their own investment decisions considering the said circumstances and obtaining such specialized advice as may be necessary. The contents of this document are based upon information available to the public that has been obtained from sources considered to be reliable. However, such information has not been independently verified by BBVA and therefore no warranty, either express or implicit, is given regarding its accuracy, integrity or correctness. BBVA accepts no liability of any type for any direct or indirect losses arising from the use of the document or its contents. Investors should note that the past performance of securities or instruments or the historical results of investments do not guarantee future performance.

The market prices of securities or instruments or the results of investments could fluctuate against the interests of investors. Investors should be aware that they could even face a loss of their investment. Transactions in futures, options and securities or high-yield securities can involve high risks and are not appropriate for every investor. Indeed, in the case of some investments, the potential losses may exceed the amount of initial investment and, in such circumstances, investors may be required to pay more money to support those losses. Thus, before undertaking any transaction with these instruments, investors should be aware of their operation, as well as the rights, liabilities and risks implied by the same and the underlying stocks. Investors should also be aware that secondary markets for the said instruments may be limited or even not exist.

BBVA or any of its affiliates, as well as their respective executives and employees, may have a position in any of the securities or instruments referred to, directly or indirectly, in this document, or in any other related thereto; they may trade for their own account or for third-party account in those securities, provide consulting or other services to the issuer of the aforementioned securities or instruments or to companies related thereto or to their shareholders, executives or employees, or may have interests or perform transactions in those securities or instruments or related investments before or after the publication of this report, to the extent permitted by the applicable law.

BBVA or any of its affiliates' salespeople, traders, and other professionals may provide oral or written market commentary or trading strategies to its clients that reflect opinions that are contrary to the opinions expressed herein. Furthermore, BBVA or any of its affiliates' proprietary trading and investing businesses may make investment decisions that are inconsistent with the recommendations expressed herein. No part of this document may be (i) copied, photocopied or duplicated by any other form or means (ii) redistributed or (iii) quoted, without the prior written consent of BBVA. No part of this report may be copied, conveyed, distributed or furnished to any person or entity in any country (or persons or entities in the same) in which its distribution is prohibited by law. Failure to comply with these restrictions may breach the laws of the relevant jurisdiction.

In the United Kingdom, this document is directed only at persons who (i) have professional experience in matters relating to investments falling within article 19(5) of the financial services and markets act 2000 (financial promotion) order 2005 (as amended, the "financial promotion order"), (ii) are persons falling within article 49(2) (a) to (d) ("high net worth companies, unincorporated associations, etc.") Of the financial promotion order, or (iii) are persons to whom an invitation or inducement to engage in investment activity (within the meaning of section 21 of the financial services and markets act 2000) may otherwise lawfully be communicated (all such persons together being referred to as "relevant persons"). This document is directed only at relevant persons and must not be acted on or relied on by persons who are not relevant persons. Any investment or investment activity to which this document relates is available only to relevant persons and will be engaged in only with relevant persons. The remuneration system concerning the analyst/s author/s of this report is based on multiple criteria, including the revenues obtained by BBVA and, indirectly, the results of BBVA Group in the fiscal year, which, in turn, include the results generated by the investment banking business; nevertheless, they do not receive any remuneration based on revenues from any specific transaction in investment banking.

BBVA is not a member of the FINRA and is not subject to the rules of disclosure affecting such members.

"BBVA is subject to the BBVA Group Code of Conduct for Security Market Operations which, among other regulations, includes rules to prevent and avoid conflicts of interests with the ratings given, including information barriers. The BBVA Group Code of Conduct for Security Market Operations is available for reference at the following web site: www.bbva.com / Corporate Governance".

BBVA is a bank supervised by the Bank of Spain and by Spain's Stock Exchange Commission (CNMV), registered with the Bank of Spain with number 0182.