

# Economic Watch

## Spain

Madrid, 4 January 2012  
Economic Analysis

Spain Unit

## 2011 ends with GDP contraction in the fourth quarter and average annual growth of 0.7%

- **4Q11 data point towards a contraction of GDP**

If the trends shown by available indicators at the dead line of this Economic Watch persist, GDP growth would have contracted by between 0.1% and 0.2% qoq in 4Q11. This would confirm the deterioration in growth prospects observed since 2Q11.

- **Consumption and investment indicators signal weakening internal demand**

Domestic demand has been affected by an uncertain environment, the fiscal consolidation process and the persistence of financial tensions, specially in Europe. Particularly, the pace of job destruction in 4Q11 drove down household spending, while the reduction in VAT did not stop housing demand from remaining at historic lows.

- **October trade balance figures suggest a slowdown in exports in the last quarter of the year**

Slower growth in the developed economies, coupled with the decline in consumer and business confidence among our main trade partners and increased uncertainty in the international financial markets have continued to fuel downside risks.

- **The significant deviation (close to 2pp of GDP) from the public deficit target for 2011 is a blow for the announced fiscal consolidation process and means that further adjustments will be necessary**

The government's determination to address this deviation rapidly is well-received and is necessary to prevent a loss of confidence by investors. If the 2011 target had been met, the government would have only needed to reduce the deficit by 1.5 of GDP in 2012. The current deviation announced means that further measures will be necessary, these will primarily affect the autonomous communities and will have an impact on internal demand growth in 2012. This will probably be reflected in the economic outlook we will describe in our February edition of Spain Economic Outlook.

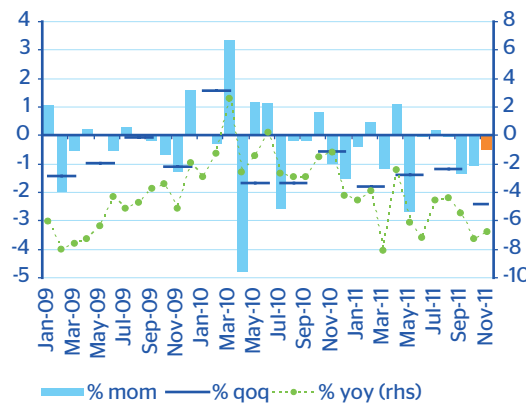
### Consumer spending declined in 4Q11

Once seasonally and working day adjusted (SWDA), real retail sales fell 0.5% mom in November compared to the stagnation expected. All products, except for personal goods (clothing, shoes, cosmetics, etc.), contributed to the negative performance of this indicator. Given the drop registered in October and assuming that December figures will be in line with forecasts, retail sales will have fallen 2.4% in 4Q11 qoq (SWDA).

Demand for cars also decreased in 4Q11, although the positive figures seen in November (1.4% mom SWDA) and December (0.5% mom SWDA) have eased the pace of this decline. The number of cars registered also fell 2.1% qoq (SWDA) between September and December compared to the fall of 6.5% qoq recorded in 3Q11. The rise in demand from rental companies (in November) and businesses (October and December) was not sufficient to offset the ongoing drop in purchases of private vehicles in 4Q11.

Chart 1

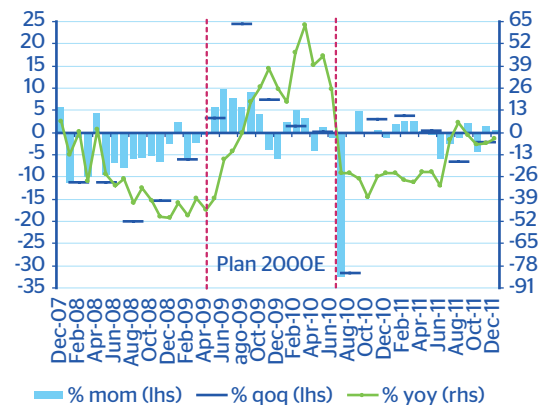
Spain: retail sales (constant prices. SWDA data)



SWDA: seasonally and working day adjusted  
Source: BBVA Research based on INE data

Chart 2

Spain: car registrations (SWDA data)



SWDA: seasonally and working day adjusted  
Source: BBVA Research based on ANFAC and Ganvam

### Real estate market activity remains at historic lows

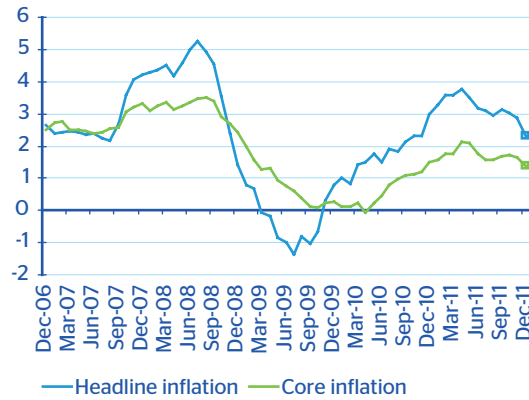
Although in October the decline in purchases (0.7% mom SWDA) was lower than in the two preceding months, housing demand is still not showing any clear signs of recovery. Therefore, home purchases in October remain at historic lows, and are still shaped by the ongoing financial tensions, economic weakness and fiscal uncertainty surrounding property transactions. In the economic context seen in the last quarter of the year, the reduction in VAT is not having a great deal of effect on demand. It is observed in mortgage activity: mortgages granted to purchase homes dropped 7.0% mom (SWDA) in October. Construction activity once again contracted; in October 5.9 thousand of new construction permits were issued, a drop of 21.7% mom (SWDA) and home rehabilitation permits also declined by 6.0% mom (SWDA).

### The leading CPI indicator signals a significant slowdown in annual inflation in December

According to the leading CPI indicator, annual inflation has slowed by 0.5 percentage points (pp) to 2.4% yoy<sup>1</sup>. Our forecasts indicate that the main reason for this slowdown is the more moderate growth in energy prices but also the lower increase in processed food prices, while inflation in the services and non-energy industrial goods has held relatively stable. As our result, our base scenario points to a slowdown in underlying inflation of around 0.3pp to 1.4% yoy.

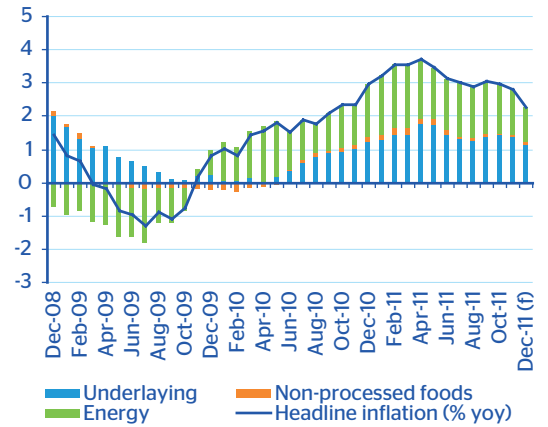
1: Definitive inflation figures published on 13 January could differ from leading data.

Chart 3  
Spain: inflation (yoy change)



Source: BBVA Research based on INE data

Chart 4  
Spain: contributions to headline inflation growth



Source: BBVA Research based on INE data

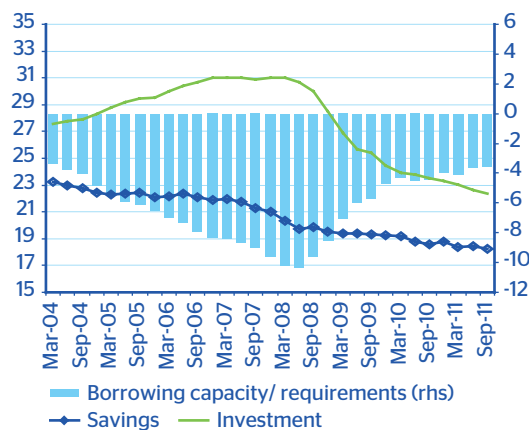
### Spain's borrowing requirement in 3Q11 was 3.5% of GDP, 0.1pp less than in 2Q11

Spain's borrowing requirement adjustment continues. At the close of the third quarter, Spain's borrowing requirement was 3.5% of GDP (cumulative annual figure), 0.1pp less than in 2Q11. This difference is the result of the slightly lower fall in investment (from 22.6% of GDP in 2Q11 to 22.4%) compared to savings which fell only 0.1pp to 18.3% of GDP. The borrowing capacity of households was reduced further in 3Q11 (cumulative annual figure), to 4.2% of gross disposable income, from 4.7% in 2Q11 due to the decline in savings (from 12.6% of gross disposable income in 2Q11 to 12.0%) and with investment holding steady at around 8.9% of gross disposable income.

From a business standpoint, a slight uptick in investment is observed (0.1pp to 12.4% of GDP) offset by the increase in savings (0.2pp to 12.8% of GDP). As a result, the borrowing capacity of companies (cumulative annual figures) was largely unaltered at around 1.7% of GDP in 3Q11.

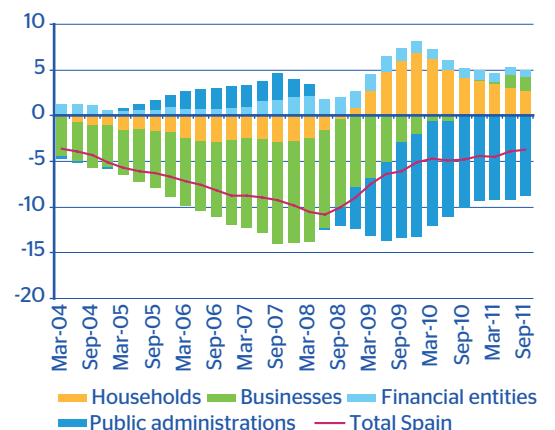
After remaining unchanged for three quarters, the public administration balance was reduced by 0.4pp to 8.8% of GDP in 3Q11. The reduction of the deficit has been caused by two factors: the slight improvement in the savings rate (-4.6% of GDP) and a further contraction in public investment (-0.3pp on the 3.5% of cumulative GDP in 2Q11).

Chart 5  
Spain: savings and investment (% GDP, cumulative annual figure)



Source: BBVA Research based on INE data

Chart 6  
Spain: borrowing capacity/requirements by agent (% GDP, cumulative annual figure)



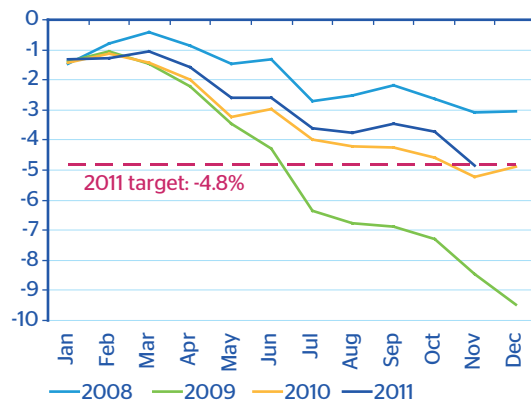
Source: BBVA Research based on INE data

**Although the cumulative deficit to November 2011 stood at 4.84% of GDP, the scope of the deviation from the target will depend on the budget outturn in December**

The November figure was affected mainly by the negative impact of the change in methodology introduced with the new base 2008, which brings forward investment costs (previously held to the end of the year) and puts back tax receipts to the moment of accrual. In practice, this led to a revenue reduction (by around 1.2pp of GDP), which will have corrected in December when revenues from personal income tax, corporate tax and VAT are included that are receivable in January and February 2012. If these adjustments had not been made, the cumulative deficit to November would have been around 3.28% of GDP but, because of not fulfil 2011 deficit target, December deficit had been particularly important.

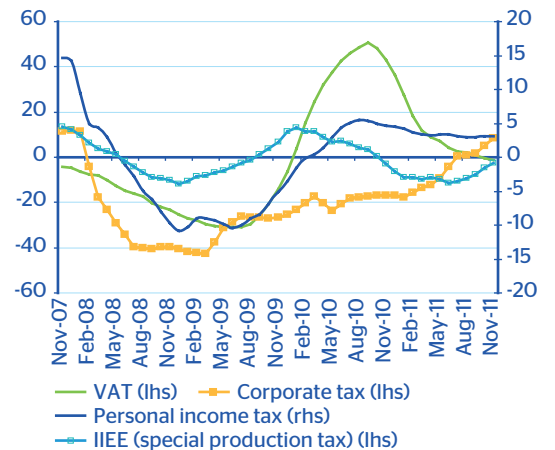
Data to November continue to reflect a sharp adjustment in non-financial expenditure which affects practically all expense items. The largest adjustments were recorded in capital expenditure (down almost 40% compared to the same period in 2010) and in current transfers between public administrations, which fell by around 20%, due to the decline in transfers to autonomous communities caused by fewer down payments in the financing system. At the same time, interest expense continues to mark yoy growth of over 20%. Tax revenue through to November 2011 increased by 0.9% overall yoy in like-for-like terms, performing slightly better than the previous month due mainly to revenues from inspections (1,420 million euros). This is mainly because of the ongoing rebound in personal income tax receipts, some improvement in the VAT base and the slight rise in corporate tax receipts. The improvement in corporate tax receipts was due to the higher revenues from inspections and the positive impact of changes in legislation (tax hikes and limit on the adjustment of goodwill and tax loss carryforwards), that should significantly boost growth in this item in December.

Chart 7  
**Central government: non-financial balance (cumulative annual, % of GDP)**



Source: BBVA Research based on MEH and INE data

Chart 8  
**Spain: fiscal revenue (yoy change like-for-like in 12m centred moving average)**



Source: BBVA Research based on MEH and INE data

**Cabinet approves agreement of non-budgetary availability for 8.9 billion euros and 6.1 billion euros tax hike**

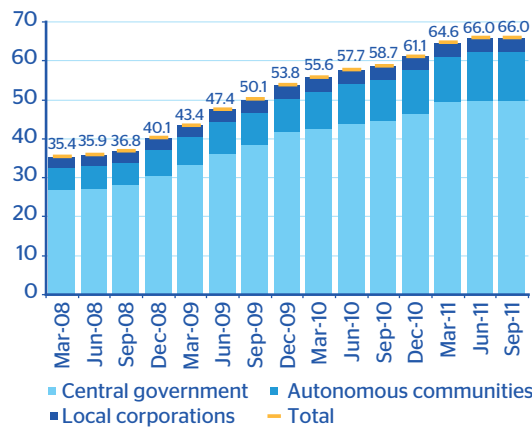
In anticipation of a potential deviation from the 2011 public deficit target, the Spanish government has announced adjustment measures for a total amount of 15 billion euros. 60% of the required adjustment will be achieved by significantly reducing government spending (8.9 billion euros), and the remaining 40% by raising taxes (mainly direct taxes) which is expected to raise around 6.1 billion euros. Specifically, marginal rates on income and capital will rise substantially (7 and 6 points, respectively).

If the 2011 target had been met, the government would have only needed to reduce the deficit by 1.5% of GDP in 2012. The current deviation means that further measures will be necessary and these (approximately two thirds) will primarily affect the autonomous communities. Furthermore, 2012 revenue will also fall short of the targets set in the previous government's Stability Programme (which specified real GDP growth of 2.3% in 2012), requiring further adjustments to meet the deficit target of 4.4%.

### Spanish public debt grew at a slower pace in 3Q11, remaining at 66% of GDP

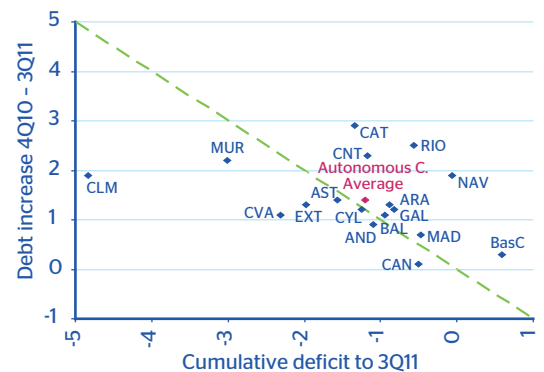
Public debt remained unchanged at 66.0% of GDP in 3Q11, with a cumulative annual increase of 4.9pp on December 2010. This slowdown in the pace of growth was observed in all areas of public administration, although it was particularly evident in central government, where debt scarcely increased, and, above all, in local corporations which reduced their debt by 0.1pp of GDP. The total debt increase seen in the autonomous communities (1.4pp) was in line with the 3Q11 deficit (1.2% of GDP). Although debt increased in all the autonomous communities, the scale of the increase was uneven. Catalonia, La Rioja and Cantabria saw the largest debt increases (significantly higher than their cumulative deficit in 3Q11). Meanwhile, the Canary Islands, Madrid, the Basque Country and Andalusia showed the smallest increases, in line with their registered deficits. As a result, Valencia, Catalonia, Castile-La Mancha and the Balearic Islands are still the regions with the highest relative debt levels (much higher than the average regional figure of 12.6% of GDP). By instrument, loans continue to grow faster than securities issues due mainly to the autonomous communities' limited access to the wholesale markets.

Chart 9  
Spain: public debt performance according to the protocol of excessive deficit (% GDP)



Source: BBVA Research based on MEH and INE data

Chart 10  
Spain: deficit and debt increases in autonomous communities at 3Q11 (% regional GDP)

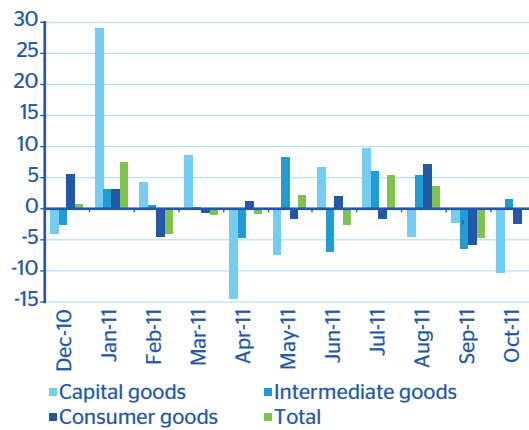


Source: BBVA Research based on MEH and INE data

### October trade balance figures suggest a slowdown in exports in the last quarter of the year

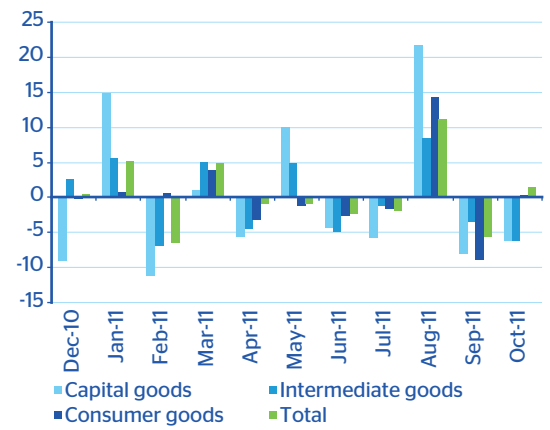
Volumes for October, adjusted for seasonal and calendar effects, reflected a slight contraction in goods exports (-0.1% mom, SWDA) following the downward correction to July and August figures seen in September. In the largest export sectors, weakness owed mainly to the decline in capital goods (-10.2% mom SWDA) and consumer goods (-2.3% mom SWDA). At the same time, imports grew slightly (+1.5% mom SWDA), albeit reversing the slump witnessed in September. Imports of capital and intermediate goods were the poorest performers. Therefore, the October trade balance figure heralds a significant slowdown in exports in the year's fourth quarter following the rebound seen in the 3Q (3Q11: +5.4% qoq SWDA) due to weak global growth and ongoing financing tensions in the eurozone.

Chart 11  
Goods exports volumes,  
large sectors (% mom; SWDA)



Source: BBVA Research based on Customs data

Chart 12  
Goods imports volumes,  
large sectors (% mom; SWDA)



Source: BBVA Research based on Customs data

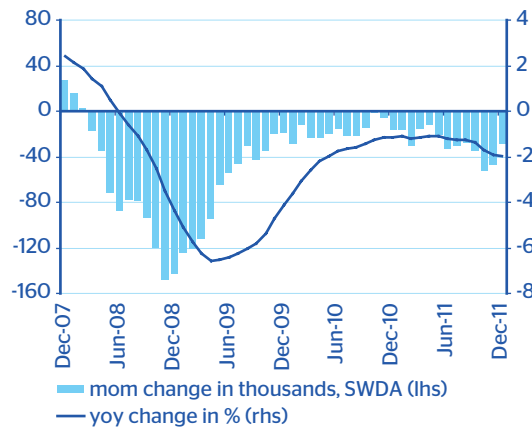
### The October current account balance stood at -39 billion euros, 3 billion less than September's figure

The 12-month cumulative current account deficit was reduced by 3.1 billion to October 2011, standing at -39 billion euros. The sharp adjustment in the balance of goods deficit was notable (100 million euros less), in line with the stabilisation observed in the October trade deficit. The 12-month cumulative surplus in services was close to 34 billion euros (up 1 billion euros) in October. The income deficit increased by 300 million euros, offset by the transfer balance deficit which dropped sharply by around 2.2 billion euros.

### December job market figures were better than expected but not enough to avoid the pace of job destruction in 4Q11

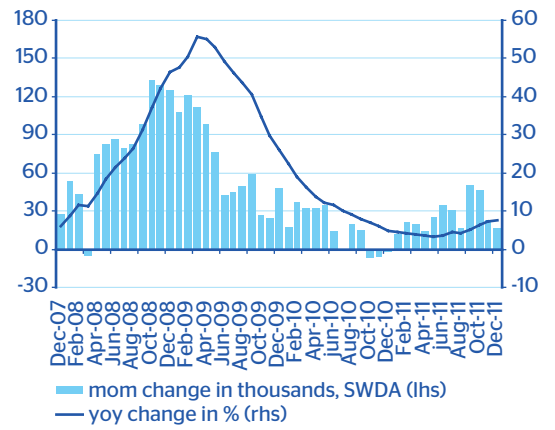
Further jobs were destroyed on the labour market in December but less than in the two preceding months. Correcting for seasonal and calendar effects, forecasts suggest a decline in Social Security affiliations of 28,000 (19,000 less than in November) and an increase of 17,000 in registered unemployment (6,000 less than in November). While all productive sectors marked a better-than-expected performance, corrected data indicate that non-farm activities continued to destroy jobs in December. In 4Q11 as a whole, affiliations fell further (0.7% qoq SWDA), while registered unemployment increased by 2.5% qoq (SWDA), suggesting a decline in activity during the fourth quarter.

Chart 13  
Spain: average social security affiliation



Source: BBVA Research based on MTIN

Chart 14  
Spain: registered unemployment

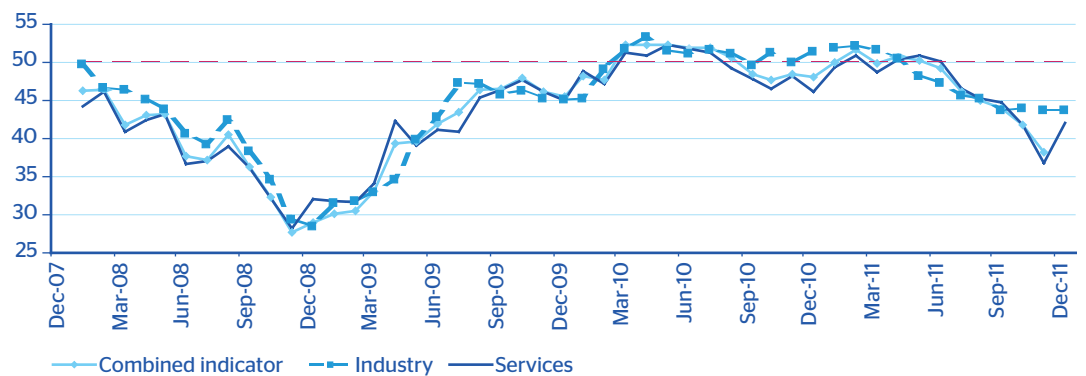


Source: BBVA Research based on SPEE

### Despite the slower decline seen in December, purchasing indicators in industry and services confirm the drop in economic activity in 4Q11

While the manufacturing and services price indicators (PMIs) signal a slowdown in the pace of deterioration in activity in December (in line with labour market data), the negative figures observed in October and November will shape economic performance in 4Q11, skewing growth forecasts downwards.

Chart 15  
Spain: PMIs\*



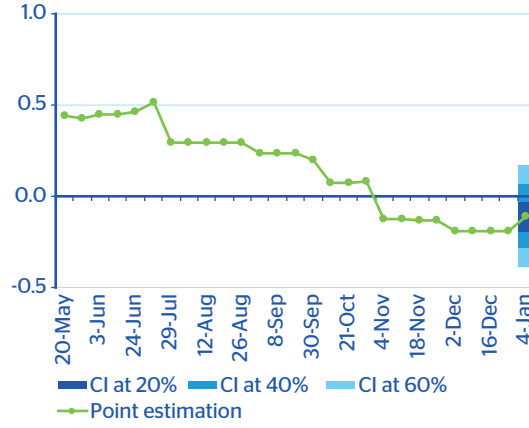
\* SWDA data. Levels above 50 indicate expansion.  
Source: BBVA Research based on Markit Economics

### The probability of GDP contraction in 4Q11 remains high

On around 80% of 4Q11 data, the real time GDP growth forecast for 4Q11 stands at between -0.1% and -0.2% qoq using the MICA-BBVA model developed by BBVA Research. As we mentioned in our last quarterly Spain Economic Outlook report published in early November<sup>2</sup>, downside risks have increased. Therefore, the probability of a decrease in Spanish GDP in 4Q11 has risen to 67%. Whether the outlook for lower growth gathers momentum will depend on policies adopted both externally and internally.

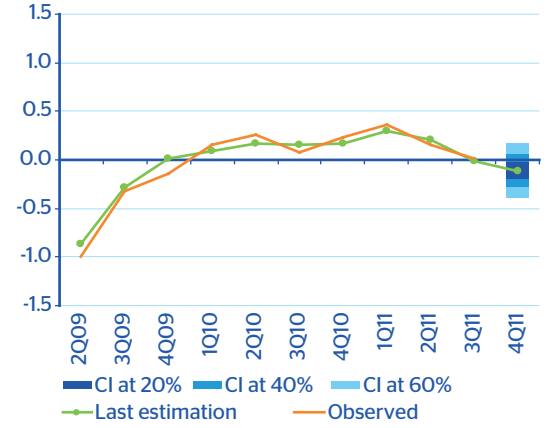
2: Available at: [http://www.bbvaerearch.com/KETD/ketd/bin/ing/publi/espana/novedades/detalle/348\\_235059.jsp?id=tc:348-176089-64](http://www.bbvaerearch.com/KETD/ketd/bin/ing/publi/espana/novedades/detalle/348_235059.jsp?id=tc:348-176089-64)

Chart 16  
Spain: 4Q11 GDP growth forecasts using the MICA-BBVA model by forecast date (% qoq)



Source: BBVA Research

Chart 17  
Spain: GDP growth observed and forecasts using MICA-BBVA model (% qoq)



Current forecast: 4 January 2012.  
Source: BBVA Research based on INE data



**DISCLAIMER**

This document and the information, opinions, estimates and recommendations expressed herein, have been prepared by Banco Bilbao Vizcaya Argentaria, S.A. (hereinafter called "BBVA") to provide its customers with general information regarding the date of issue of the report and are subject to changes without prior notice. BBVA is not liable for giving notice of such changes or for updating the contents hereof.

This document and its contents do not constitute an offer, invitation or solicitation to purchase or subscribe to any securities or other instruments, or to undertake or divest investments. Neither shall this document nor its contents form the basis of any contract, commitment or decision of any kind.

**Investors who have access to this document should be aware that the securities, instruments or investments to which it refers may not be appropriate for them due to their specific investment goals, financial positions or risk profiles, as these have not been taken into account to prepare this report.** Therefore, investors should make their own investment decisions considering the said circumstances and obtaining such specialized advice as may be necessary. The contents of this document is based upon information available to the public that has been obtained from sources considered to be reliable. However, such information has not been independently verified by BBVA and therefore no warranty, either express or implicit, is given regarding its accuracy, integrity or correctness. BBVA accepts no liability of any type for any direct or indirect losses arising from the use of the document or its contents. Investors should note that the past performance of securities or instruments or the historical results of investments do not guarantee future performance.

**The market prices of securities or instruments or the results of investments could fluctuate against the interests of investors. Investors should be aware that they could even face a loss of their investment. Transactions in futures, options and securities or high-yield securities can involve high risks and are not appropriate for every investor. Indeed, in the case of some investments, the potential losses may exceed the amount of initial investment and, in such circumstances, investors may be required to pay more money to support those losses. Thus, before undertaking any transaction with these instruments, investors should be aware of their operation, as well as the rights, liabilities and risks implied by the same and the underlying stocks. Investors should also be aware that secondary markets for the said instruments may be limited or even not exist.**

BBVA or any of its affiliates, as well as their respective executives and employees, may have a position in any of the securities or instruments referred to, directly or indirectly, in this document, or in any other related thereto; they may trade for their own account or for third-party account in those securities, provide consulting or other services to the issuer of the aforementioned securities or instruments or to companies related thereto or to their shareholders, executives or employees, or may have interests or perform transactions in those securities or instruments or related investments before or after the publication of this report, to the extent permitted by the applicable law.

BBVA or any of its affiliates' salespeople, traders, and other professionals may provide oral or written market commentary or trading strategies to its clients that reflect opinions that are contrary to the opinions expressed herein. Furthermore, BBVA or any of its affiliates' proprietary trading and investing businesses may make investment decisions that are inconsistent with the recommendations expressed herein. No part of this document may be (i) copied, photocopied or duplicated by any other form or means (ii) redistributed or (iii) quoted, without the prior written consent of BBVA. No part of this report may be copied, conveyed, distributed or furnished to any person or entity in any country (or persons or entities in the same) in which its distribution is prohibited by law. Failure to comply with these restrictions may breach the laws of the relevant jurisdiction.

In the United Kingdom, this document is directed only at persons who (i) have professional experience in matters relating to investments falling within article 19(5) of the financial services and markets act 2000 (financial promotion) order 2005 (as amended, the "financial promotion order"), (ii) are persons falling within article 49(2) (a) to (d) ("high net worth companies, unincorporated associations, etc.") Of the financial promotion order, or (iii) are persons to whom an invitation or inducement to engage in investment activity (within the meaning of section 21 of the financial services and markets act 2000) may otherwise lawfully be communicated (all such persons together being referred to as "relevant persons"). This document is directed only at relevant persons and must not be acted on or relied on by persons who are not relevant persons. Any investment or investment activity to which this document relates is available only to relevant persons and will be engaged in only with relevant persons. The remuneration system concerning the analyst/s author/s of this report is based on multiple criteria, including the revenues obtained by BBVA and, indirectly, the results of BBVA Group in the fiscal year, which, in turn, include the results generated by the investment banking business; nevertheless, they do not receive any remuneration based on revenues from any specific transaction in investment banking.

BBVA is not a member of the FINRA and is not subject to the rules of disclosure affecting such members.

**"BBVA is subject to the BBVA Group Code of Conduct for Security Market Operations which, among other regulations, includes rules to prevent and avoid conflicts of interests with the ratings given, including information barriers. The BBVA Group Code of Conduct for Security Market Operations is available for reference at the following web site: [www.bbva.com / Corporate Governance](http://www.bbva.com / Corporate Governance)".**

BBVA is a bank supervised by the Bank of Spain and by Spain's Stock Exchange Commission (CNMV), registered with the Bank of Spain with number 0182.

**BBVA Research Spain:**

Chief Economist  
**Miguel Cardoso**  
+34 91 374 39 61  
miguel.cardoso@bbva.com

**Mónica Correa**  
+34 91 374 64 01  
monica.correa@bbva.com

**Juan Ramón García**  
+34 91 374 33 39  
juanramon.g@bbva.com

**Félix Lores**  
+34 91 374 01 82  
felix.lores@bbva.com

**Leticia Riva**  
leticia.riva@bbva.com  
+34 91 374 62 66

**Miguel Pérez**  
+34 91 374 75 28  
m.perezvillaseca@bbva.com

**Virginia Pou**  
+34 91 537 77 23  
virginia.pou@bbva.com

**Pep Ruiz**  
+34 91 537 55 67  
ruiz.aguirre@bbva.com

**Camilo Andrés Ulloa**  
+34 91 537 84 73  
camiloandres.ulloa@bbva.com

**BBVA Research**

*Group Chief Economist*  
**Jorge Sicilia**

*Emerging Economies:*  
**Alicia García-Herrero**  
alicia.garcia-herrero@bbva.com.hk

Cross-Country Emerging Markets Analysis  
**Álvaro Ortiz Vidal-Abarca**  
alvaro.ortiz@bbva.com

Asia  
**Stephen Schwartz**  
stephen.schwartz@bbva.com.hk  
China

India  
**Sumedh Deorukhkar**  
deorukhkar@grupobbva.com

South America  
**Joaquín Vial**  
jvial@bbva.com

Argentina  
**Gloria Sorensen**  
gsorensen@bbva.com

Chile  
**Alejandro Puente**  
apuente@bbva.com

Colombia  
**Juana Téllez**  
juana.tellez@bbva.com

Peru  
**Hugo Perea**  
hperea@grupobbva.com.pe  
Venezuela  
**Oswaldo López**  
oswaldo\_lopez@provincial.com

Mexico  
**Adolfo Albo**  
a.albo@bbva.bancomer.com  
Macroeconomic Analysis Mexico  
**Julián Cubero**  
juan.cubero@bbva.bancomer.com

*Developed Economies:*  
**Rafael Doménech**  
rdomelech@bbva.com

Spain  
**Miguel Cardoso**  
miguel.cardoso@bbva.com

Europe  
**Miguel Jiménez**  
mjimenezg@bbva.com

United States  
**Nathaniel Karp**  
nathaniel.karp@bbvacompass.com

*Financial Systems & Regulation:*  
**Santiago Fernández de Lis**  
sfernandezdelis@bbva.com

Financial Systems  
**Ana Rubio**  
arubiog@grupobbva.com

Pensions  
**David Tuesta**  
david.tuesta@bbva.com

Regulation and Public Policy  
**María Abascal**  
maria.abascal@bbva.com

*Global Areas:*

Economic Scenarios  
**Juan Ruiz**  
juan.ruiz@bbva.com

Financial Scenarios  
**Sonsoles Castillo**  
s.castillo@bbva.com

Innovation & Processes  
**Clara Barrabés**  
clara.barrabes@bbva.com

*Market & Client Strategy:*  
**Antonio Pulido**  
ant.pulido@grupobbva.com

Global Equity  
**Ana Munera**  
ana.munera@grupobbva.com

Global Credit  
**Javier Serna**  
Javier.Serna@bbvauk.com

Global Interest Rates, FX  
and Commodities  
**Luis Enrique Rodríguez**  
luisen.rodriguez@grupobbva.com

**Contact details:**

**BBVA Research**  
Paseo Castellana, 81 - 7<sup>th</sup> floor  
28046 Madrid (Spain)  
Tel: +34 91 374 60 00 and 91 537 70 00  
Fax: +34 91 374 30 25  
bbvaresearch@bbva.com  
www.bbvaresearch.com