

Mexico Weekly Flash

Next week...

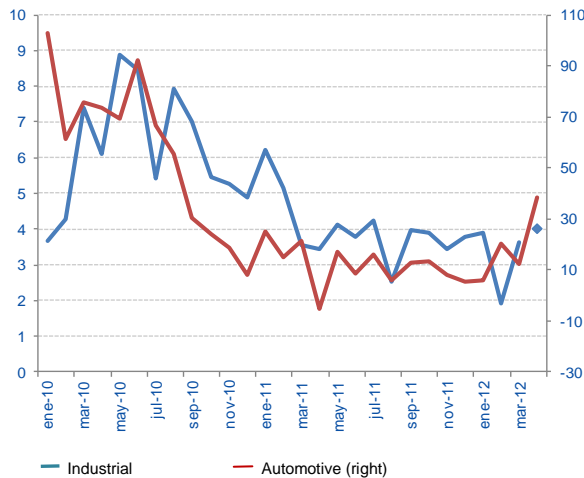
- ... Focus on industrial output for April - the first major activity data in the second quarter

Industrial output in April should have increased in line with our estimate of 0.6% per month, driven by manufacturing and construction. Some key branches such as transport equipment output should see a positive annual comparison base effect linked to the exceptional fall in April 2011 due to the lack of supplies after the Japan tsunami. In this sense, automotive output data for April 2012 (AMIA) are already known, seeing an annual 38.5% increase spurred by the comparison with a monthly decline in April 2011 of 20%, a decline only surpassed during the global collapse at the start of 2009. The construction industry should see growth driven mostly by private development, although it should be highlighted that public sector construction output has gained share in the first quarter of the year. Industrial output figures for April will be very important for surveying the growth outlook for the entire Mexican economy in the second quarter of the year, not only due to uncertainty in the global setting but also to the statistical effect the correction for the leap year could cause.

- Monetary policy should not affect the MXN. Holding the short Udibonos section recommended

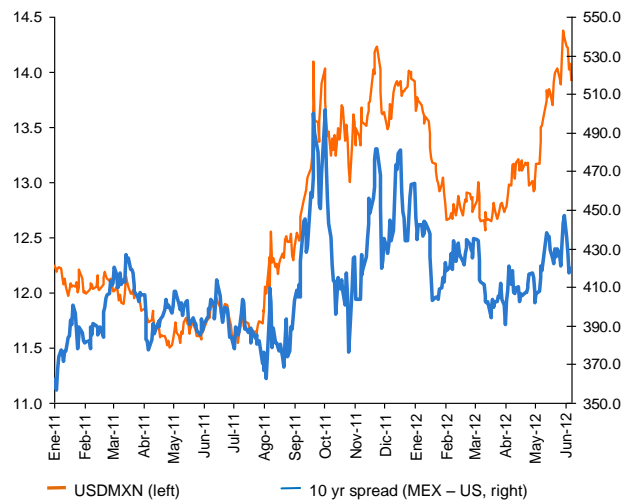
Monetary policy statement is neutral with Banxico again leaving the possibility of a move at any time open. We do not think a quick rise is likely but nominal curves are at difficult-to-sustain levels. Given the seasonal inflation rises, we stay long in the short section of the Udibonos curve. As for currencies, we expect the MXN to continue to fluctuate due to external factors and therefore remain cautious.

Chart 1
Automotive and industrial output (y/y % change)



Source: BBVA Research with data from INEGI and AMIA

Chart 2
10-year bond spread (Mexico less US, bp) and Exchange rate (USDMXN)



Source: Bloomberg

Calendar: Indicators

Industrial Output for April (June 11)

Forecast: 0.6% m/m, 4.0% y/y SA	Consensus:N.A.	Previous: 1.5% m/m, 3.6% y/y SA
---------------------------------	----------------	---------------------------------

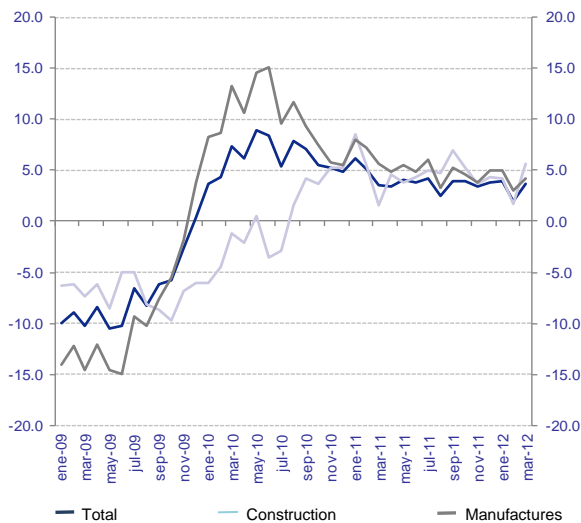
GDP 1Q12, demand components (June 14)

Forecast: AD 1.5% q/q, 3.5% y/y SA	Consensus: N.A.	Previous: AD 0.0% q/q, 3.9% y/y SA
------------------------------------	-----------------	------------------------------------

With GDP growth figures for 1Q12 known, seeing a higher-than-expected increase (0.8% e, 1.3% q/q o), the composition of this growth will be important. Based on the performance of variables such as retail sales, consumer confidence and jobs and salary growth in real terms, we believe private consumption will have continued to rise at a good rate in the first months of this year. In this way, on the output side, GDP in the services sector expanded over said period at 0.8% q/q, double that from the previous quarter. Additionally, manufacturing will likely have continued its recovery at the start of the year, as signaled by the gross fixed capital indicator with 7.4% annual growth in the first two months of the year vs. 5.8% in the last quarter of 2011. Capital goods imports were also better at the start of the year than at the end of last: 17% vs. 12.2%. In all, we expect domestic demand components to have been key to GDP growth in the first quarter and maintain our forecast for the year at around 3.7%.

Chart 3

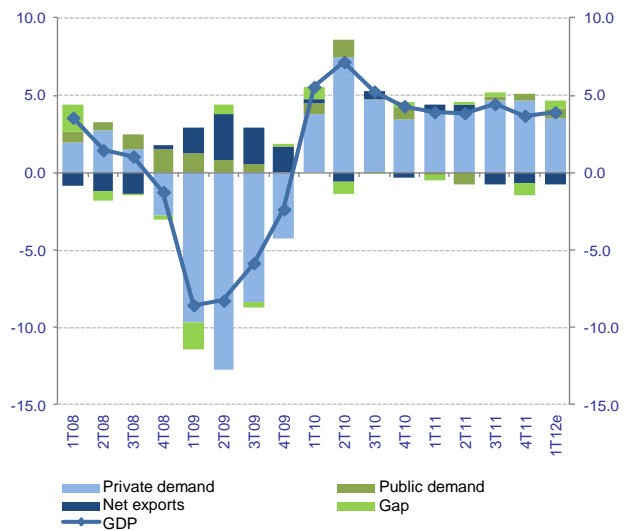
Industrial output (% change y/y)



Source: BBVA Research with INEGI data

Chart 4

GDP and components (y/y % change and contribution)



Source: BBVA Research with INEGI data

- **We continue outside nominal curves**

Although the monetary policy statement is neutral, Banxico again leaves the possibility of a move at any time open. We do not see a quick rise but nominal curves at a difficult-to-sustain levels, global risks do not appear to be decreasing and the likelihood of more financial stimulus seems to be consolidating. We therefore remain outside nominal curves and await clearer triggers so as to apply directional strategies.

Global markets seem to see Mexican bonds as a type of safe-haven asset which has steadied the correlation between the MXN and domestic debt instruments. This means that the greatest threat to domestic assets would be an upward correction in the risk premium (minimums in the US and Mexico) and not so much a moderate decline in global economic conditions.

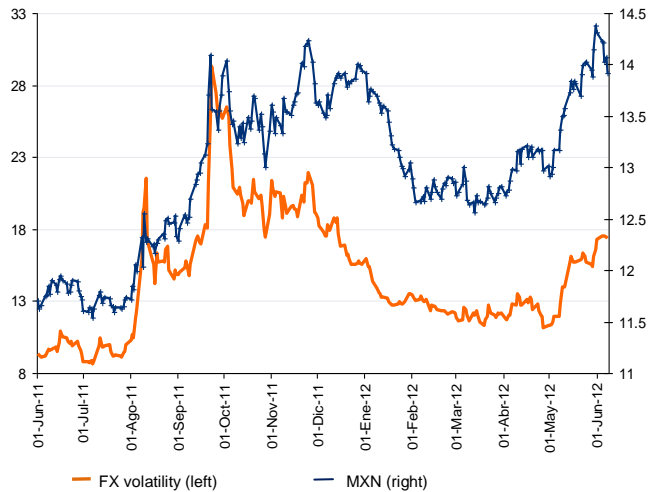
In this way, and based on the current level, nominal curves could be more reactive to upward triggers (even in an overseas inflow context). As there is no clear motivation for domestic monetary action and given the seasonal upswings in inflation, we remain long in the short part of the Udibonos curve, which will continue to be a safe-haven asset for domestic and foreign investors.

- **Banxico stance should not affect the MXN**

Although it highlights the currency's recent weakness, Banxico sees the MXN as a key stabilizing factor. The central bank has given no signs for now of considering new interventionist measures or changing the current auction mechanism of USD400mn.

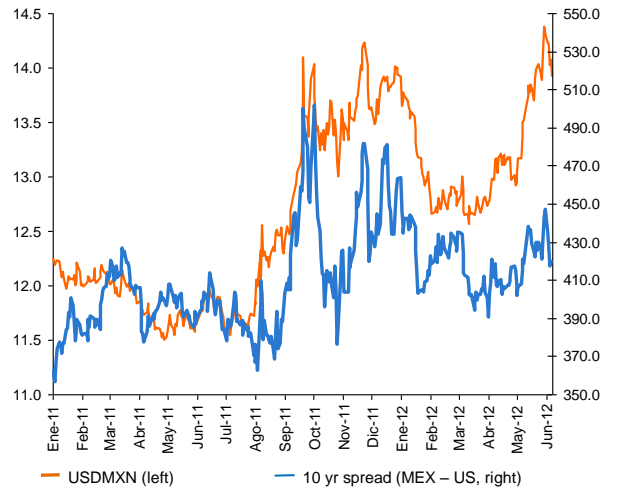
We expect the MXN to continue to fluctuate due to external factors and therefore remain cautious.

Chart 5
Mexico: MXN/USD and implied 3-month volatility (%)



Source: Bloomberg

Chart 6
10-year bond spread (Mexico less US, bp) and Exchange rate (USDMXN)



Source: Bloomberg

Technical Analysis

IPC



Source: BBVA, Bancomer, Bloomberg

The IPC short-term outlook remains unchanged. It continues to trade above the 200-day rolling average (36,879pts) although the attempted bounce over the week was not enough to place it above the 10-day rolling average (37,500pts) despite trading above this for two sessions during the week. Until it breaks down through the 200-day rolling average, we do not recommend closing short-term positions. Above the 10-day rolling average, the next resistance sits at the 30-day rolling average at 38,130pts.

Previous Rec.: It found resistance at 38,000pts over the week and we cannot rule out that, after hitting this level, it has started a short-term downward move.

MXN



Source: BBVA, Bancomer, Bloomberg

The dollar remained trading with a major upward move and ended the week above the important resistance of MXN14.30, representing the maximum of the previous year. Although it managed to trade above MXN14.50, it returned big in the intraday, with doji candlestick appearing. The next candle should be negative to be able to see a downward trend change pattern. Short-term over-purchasing remains very high.

Previous Rec.: An over-reaction toward MXN14.30 cannot be ruled out.

3Y M BOND

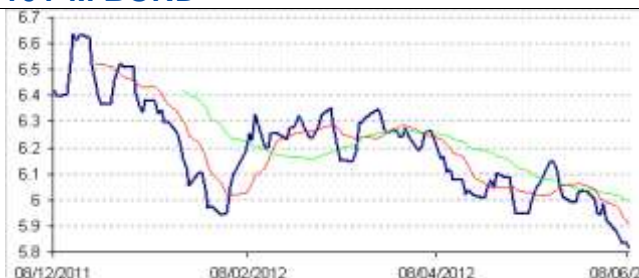


Source: BBVA, Bancomer, Bloomberg

3-YEAR M BOND (yield): With no major changes, it continued to trade at 200-day rolling average levels. Exit if it breaks down through 4.75%. Initial resistance at 4.85%.

Previous Rec.: There is no exit signal since it continues to trade above the 20-day rolling average (4.79%) and oscillating indicators do not point to over-purchasing.

10Y M BOND



Source: BBVA, Bancomer, Bloomberg

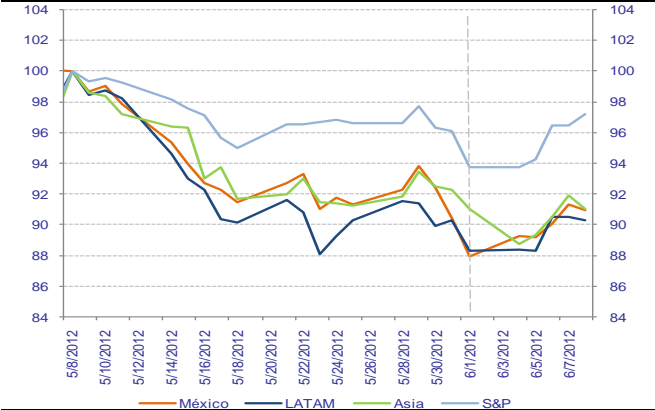
10-YEAR M BOND (yield): Breaking the support by coming in below 5.93%, meaning the bond is at the 2011 minimum and the RSI at 30 points. Any bounce from this support would hit resistance at 5.9%.

Previous Rec.: We do not recommend an exit unless it breaks downward through 5.93%.

Markets

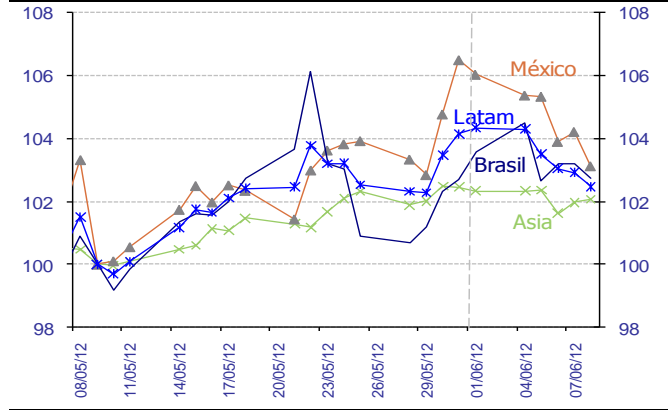
- In a context of economic data pointing to cycle slowdown, market expectations of more monetary support from central banks increase. This leads to gains on stock markets and stronger LatAm currencies.

Chart 7
Stock Markets: MSCI Indices
 (May 8, 2012 index = 100)



Source: Bloomberg & BBVA Research

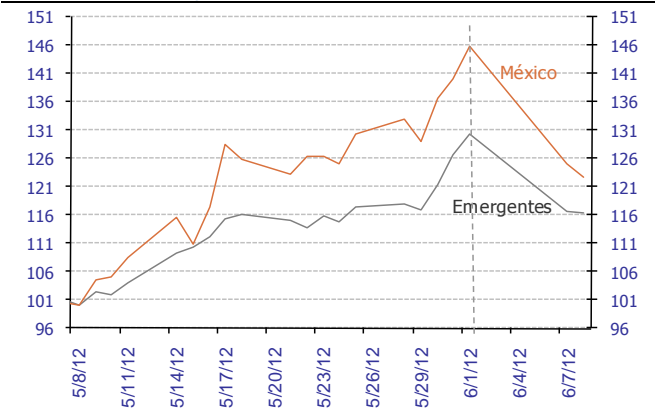
Chart 8
Foreign exchange: dollar exchange rates
 (May 8, 2012 index = 100)



Source: Bloomberg and BBVA Research. Note: LATAM includes Argentina, Brazil, Chile, Colombia and Peru. Asia includes the Philippines, South Korea, Taiwan, Singapore, Indonesia and Thailand. Non-weighted averages

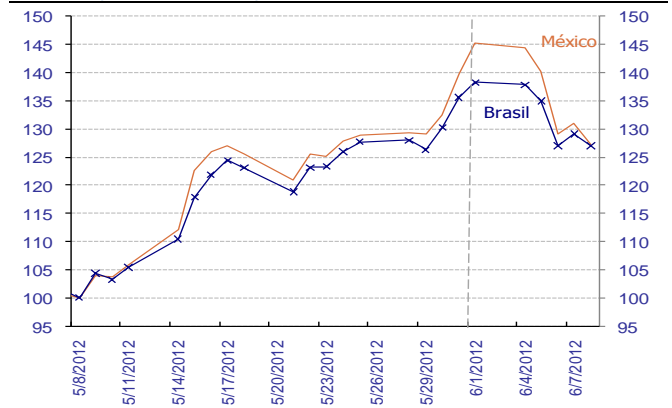
- Fall in global risk aversion over the week after statements from the ECB chairman on a readiness-to-act as the region's growth outlook declines.

Chart 9
Risk: EMBI+ (May 8, 2012 index = 100)



Source: Bloomberg & BBVA Research

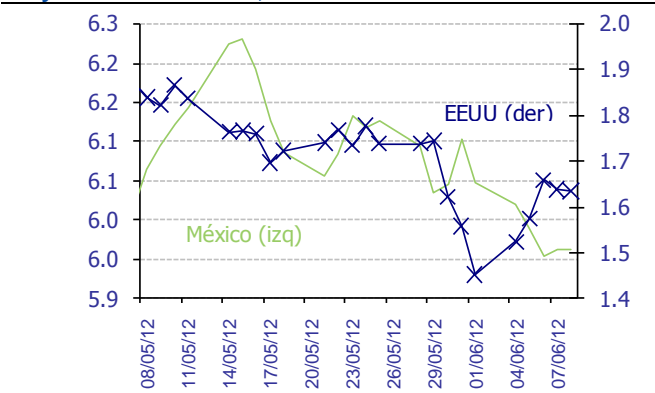
Chart 10
Risk: 5 year CDS (May 8, 2012 index=100)



Source: Bloomberg & BBVA Research

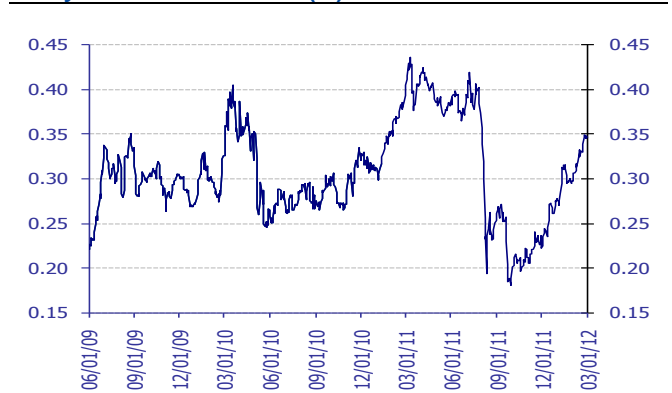
- 10Y interest rate in US moves up slightly over the week after hitting all-time lows. Rates in Mexico record a slight fall over the week.

Chart 11
10-year interest rates*, last month



Source: Bloomberg & BBVA Research

Chart 12
Carry-trade Mexico index (%)

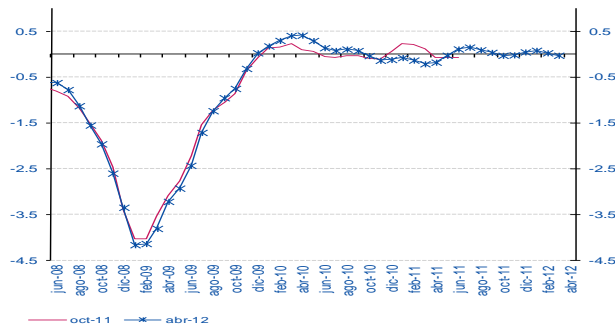


Source: BBVA Research with data from Bloomberg

Activity, inflation, monetary conditions

- Output holds positive performance, situation indicators point to 2Q12 with quarterly rates around 0.7%.

Chart 13
BBVA Research Synthetic Activity Indicator for the Mexican economy



Source: BBVA Research with data from INEGI, AMIA and BEA
 Weighted sum of 21 different indicators of activity, expenditure and expectation, based on trend series.

- Inflation ceases downward surprises while output moved up.

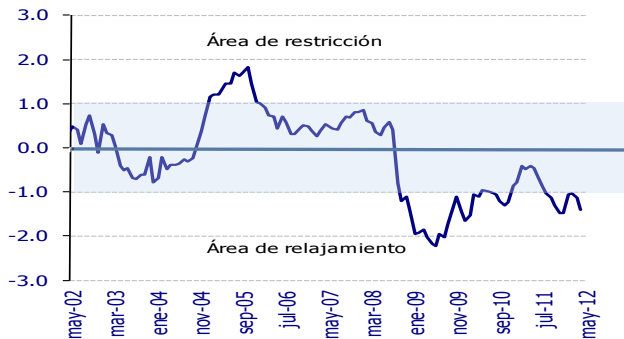
Chart 15
Inflation Surprise Index (July 2002=100)



Source: BBVA Research with data from Banxico from the monthly surveys on the expectations of economic specialists in the private sector.

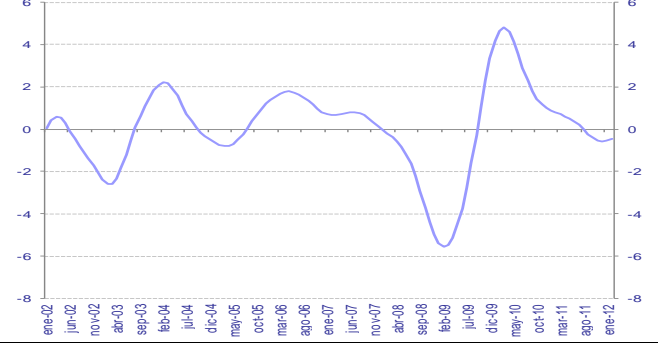
- Monetary Conditions ease due to exchange rate depreciation in May

Chart 17
Monetary Conditions Index



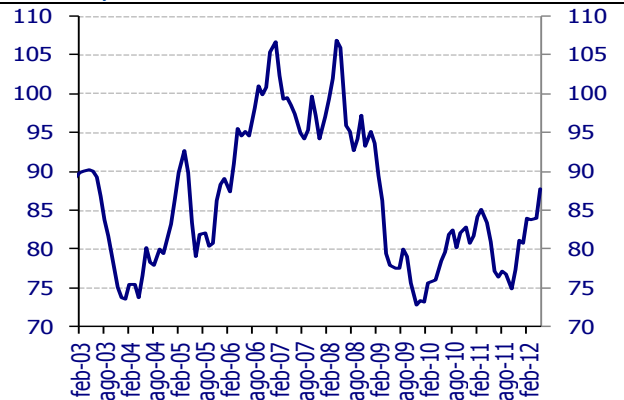
Source: BBVA Research.

Chart 14
Advance Indicator of Activity (% change y/y)



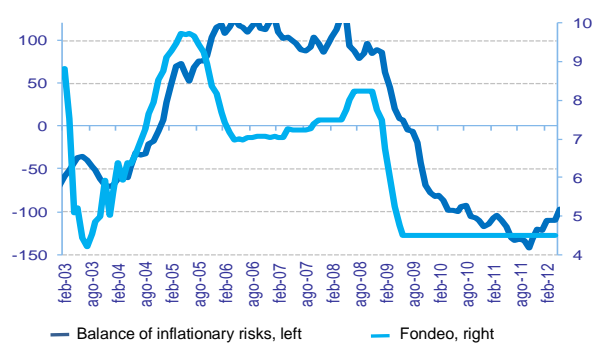
Source: INEGI

Chart 16
Activity Surprise Index (2002=100)



Source: BBVA Research with data from Bloomberg. Difference between recorded data and the Bloomberg consensus for seven activity variables in Mexico. Standardized index. Rises (falls): positive (negative) surprises.

Chart 18
Balance of Inflationary Risks* and Lending Rate (standardized and %; monthly averages)



Source: BBVA Research. * Standardized and weighted index (of inflation and economic growth) based on economic indicators of economic activity and inflation. A rise in the index points to a greater weight of inflationary risks over growth risks and thus a greater possibility of monetary restriction

Claudia Ceja
claudia.ceja@bbva.bancomer.com
+5255 5621 9715
Octavio Gutiérrez Engelmán
o.gutierrez3@bbva.bancomer.com
+5255 5621 9245
Iván Martínez
ivan.martinez.2@bbva.com

Julian Cubero
juan.cubero@bbva.com
Ociel Hernández
o.hernandez@bbva.bancomer.com
+5255 5621 9616
Rodrigo Ortega
r.ortega@bbva.bancomer.com
+52 55 5621 9701

Alejandro Fuentes Pérez
a.fuentes@bbva.bancomer.com
+52 55 5621 9705
Arnoldo López
arnoldo.lopez@bbva.com
Cecilia Posadas
c.posadas@bbva.com

Pedro Uriz
pedro.uriz2@bbva.com



| Av. Universidad 1200, Col. Xoco, Mexico 03339 D.F. | researchmexico@bbva.bancomer.com | www.bbva.com

IMPORTANT DISCLOSURES

The BBVA Group companies identified by the research analysts' names included on page 7 of this report have participated in or contributed to its preparation, including the information, opinions, estimates, forecasts and recommendations therein.

For recipients in the European Union, this document is distributed by Banco Bilbao Vizcaya Argentaria, S.A. (hereinafter called "BBVA"). BBVA is a bank supervised by the Bank of Spain and by Spain's Stock Exchange Commission (CNMV), registered with the Bank of Spain with number 0182.

For recipients in Mexico, this document is distributed by BBVA Bancomer, S.A. Institución de Banca Múltiple, Grupo Financiero BBVA Bancomer (hereinafter called "BBVA Bancomer"). BBVA Bancomer is a bank supervised by the Comisión Nacional Bancaria y de Valores de México.

For recipients in USA, this document is being distributed by BBVA Securities Inc. (hereinafter called "BBVA Securities"), a subsidiary of Banco Bilbao Vizcaya Argentaria, S.A. ("BBVA") registered with and supervised by the U.S. Securities and Exchange Commission and a member of the Financial Industry Regulatory Authority ("FINRA") and the Securities Investor Protection Corporation. U.S. persons wishing to execute any transactions should do so only by contacting a representative of BBVA Securities in the U.S. Unless local regulations provide otherwise, non-U.S. persons should contact and execute transactions through a BBVA branch or affiliate in their home jurisdiction.

BBVA and BBVA Group companies or affiliates (art. 42 of the Royal Decree of 22 August 1885 Code of Commerce), are subject to the BBVA Group Policy on Conduct for Security Market Operations which establishes common standards for activity in these entities' markets, but also specifically for analysis and analysts. This BBVA policy is available for reference at the following web site: www.bbva.com.

Analysts residing outside the U.S. who have contributed to this report are not registered with or qualified as research analysts by FINRA or the New York Stock Exchange and may not be considered "associated persons" of BBVA Securities (as such term is construed by the rules of FINRA). As such, they are not subject to NASD Rule 2711 restrictions on communications with subject companies, public appearances and trading of securities held in research analysts' accounts.

BBVA is subject to a Code of Conduct for Security Market Operations, which details the standards of the above-mentioned overall policy for the EU. Among other regulations, it includes rules to prevent and avoid conflicts of interests with the ratings given, including information barriers. This Code of Conduct for Security Market Operations is available for reference at the following web site: www.bbva.com / Corporate Governance.

BBVA Bancomer is subject to a Code of Conduct and to Internal Standards of Conduct for Security Market Operations, which details the standards of the above-mentioned overall policy for Mexico. Among other regulations, it includes rules to prevent and avoid conflicts of interests with the ratings given, including information barriers. These Code and the Internal Standards is available for reference at the following web site: www.bancomer.com/GrupoBBVABancomer/Conócenos.

BBVA Securities is subject to a Capital Markets Code of Conduct, which details the standards of the above-mentioned overall policy for USA. Among other regulations, it includes rules to prevent and avoid conflicts of interests with the ratings given, including information barriers.

EXCLUSIVELY FOR RECIPIENTS RESIDENT IN MEXICO

In the past twelve months, BBVA Bancomer has granted banking credits to the following companies covered in this report: **ALFA, AXTEL, CONSTRUCCION Y SERVICIOS INTEGRALES SIGMA, CORPORACION GEO, DAIMLER MEXICO, FACILEASING, GENOMMA LAB INTERNACIONAL, GRUPO CARSO, GRUPO CASA SABA, GRUPO CEMENTOS DE CHIHUAHUA, GRUPO COMERCIAL CHEDRAUI, GRUPO PALACIO DE HIERRO, IMPULSORA DEL DESARROLLO Y EL EMPLEO EN AMERICA LATINA, INDUSTRIAS BACHOCO, INMOBILIARIA RUBA, PEMEX CORPORATIVO, TIENDAS CHEDRAUI, URBI DESARROLLOS URBANOS, VOLKSWAGEN LEASING.**

In the past twelve months, BBVA Bancomer has granted *Representación Común* services to the following companies covered in this report: **N/A**

BBVA or one or more of its affiliates makes a market/provides liquidity in the securities of the following companies covered in this report: MexDer Contrato de Futuros (Dólar de Estados Unidos de América (DEUA), TIIE de 28 días (TE28), Swap de TIIE, CETES de 91 días (CE91)), Bonos M, Bonos M3, Bonos M10, Índice de Precios y Cotizaciones de la BMV (IPC), Contrato de Opciones (IPC, Acciones América Móvil, Cemex, CPO, Femsa UBD, Gcarso A1, Telmex L), Udibonos.

As far as it is known, a Director, Executive Manager or Manager reporting directly to the BBVA Bancomer General Manager has the same position in the following companies that may be covered in this report: Alfa, Aisea, America Movil, Asur, CMR, Coca-Cola Femsa, Consorcio Hogar, Dine, El Puerto de Liverpool, Fomento Económico Mexicano, Gruma, Grupo Aeroportuario del Pacífico, Grupo Aeroportuario del Sureste, Grupo Bimbo, Grupo Carso, Grupo Financiero Inbursa, Grupo Kuo, Grupo Modelo, Grupo Posadas, Grupo Televisa, Industrias Peñoles, Invex Controladora, México, Grupo Aeroportuario del Centro Norte, Sanborns Hermanos, Sears Roebuck de México, Telecom, Telefonos de México, Tenaris, Urbi Desarrollos Urbanos, Vitro.

BBVA Bancomer, and, as applicable, its affiliates within BBVA Bancomer Financial Group, may hold from time to time investments in the securities or derivatives financial instruments with underlying securities covered in this report, which represents 10% or more of its securities or investment portfolio, or 10% or more of the issue or underlying of the securities covered.

DISCLAIMER

This document and the information, opinions, estimates, forecasts and recommendations expressed herein have been prepared to provide BBVA Group's customers with general information and are current as of the date hereof and subject to changes without prior notice. Neither BBVA nor any of its affiliates is responsible for giving notice of such changes or for updating the contents hereof.

This document and its contents do not constitute an offer, invitation or solicitation to purchase or subscribe to any securities or other instruments, to undertake or divest investments, or to participate in any trading strategy. Neither shall this document nor its contents form the basis of any contract, commitment or decision of any kind.

Investors who have access to this document should be aware that the securities, instruments or investments to which it refers may not be appropriate for them due to their specific investment goals, financial positions or risk profiles, as these have not been taken into account to prepare this report. Therefore, investors should make their own investment decisions considering the said circumstances and obtaining such specialized advice as may be necessary. Other than the disclosures relating to BBVA Group, the contents of this document are based upon information available to the public that has been obtained from sources considered to be reliable. However, such information has not been independently verified by BBVA or any of its affiliates and therefore no warranty, either express or implicit, is given regarding its accuracy, integrity or correctness. To the extent permitted by law, **BBVA and its affiliates accept no liability of any type for any direct or indirect losses or damages arising from the use of this document or its contents. Investors should note that the past performance of securities or instruments or the historical results of investments do not guarantee future performance.**

The market prices of securities or instruments or the results of investments could fluctuate against the interests of investors. Investors should be aware that they could even face a loss of their investment. Transactions in futures, derivatives, options on securities or high-yield securities can involve high risks and are not appropriate for every investor. Indeed, in the case of some investments, the potential losses may exceed the amount of initial investment and, in such circumstances; investors may be required to pay more money to support those losses. Thus, before undertaking any transaction with these instruments, investors should be aware of their operation, as well as the rights, liabilities and risks implied by the same and the underlying securities. Investors should also be aware that secondary markets for the said instruments may not exist.

BBVA or any of its affiliates' salespeople, traders, and other professionals may provide oral or written market commentary or trading strategies to its clients that reflect opinions that are contrary to the opinions expressed herein. Furthermore, BBVA or any of its affiliates' proprietary trading and investing businesses may make investment decisions that are inconsistent with the recommendations expressed herein. No part of this document may be (i) copied, photocopied or duplicated by any other form or means (ii) redistributed or (iii) quoted, without the prior written consent of BBVA. No part of this report may be copied, conveyed, distributed or furnished to any person or entity in any country (or persons or entities in the same) in which its distribution is prohibited by law. More specifically, this document is in no way intended for, or to be distributed or used by an entity or person resident or located in a jurisdiction in which the said distribution, publication, use of or access to the document contravenes the law which requires BBVA or any of its affiliates to obtain a licence or be registered. Failure to comply with these restrictions may breach the laws of the relevant jurisdiction.

The remuneration system concerning the analysts responsible for the preparation of this report is based on multiple criteria, including the revenues obtained by BBVA and, indirectly, the results of BBVA Group in the fiscal year, which, in turn, include the results generated by the investment banking business; nevertheless, they do not receive any remuneration based on revenues from any specific transaction in investment banking.

In the United Kingdom, this document is directed only at persons who (i) have professional experience in matters relating to investments falling within article 19(5) of the financial services and markets act 2000 (financial promotion) order 2005 (as amended, the "financial promotion order"), (ii) are persons falling within article 49(2) (a) to (d) ("high net worth companies, unincorporated associations, etc.") of the financial promotion order, or (iii) are persons to whom an invitation or inducement to engage in investment activity (within the meaning of section 21 of the financial services and markets act 2000) may otherwise lawfully be communicated (all such persons together being referred to as "relevant persons"). This document is directed only at relevant persons and must not be acted on or relied on by persons who are not relevant persons. Any investment or investment activity to which this document relates is available only to relevant persons and will be engaged in only with relevant persons.

BBVA Hong Kong Branch (CE number AFR194) is regulated by the Hong Kong Monetary Authority and the Securities and Futures Commission of Hong Kong.

This document is distributed in Singapore by the BBVA's office in this country for general information purposes and it is generally accessible. In this respect, this document does not take into account the specific investment goals, the financial situation or the need of any particular person and it is exempted from Regulation 34 of the Financial Advisors Regulation ("FAR") (as required in Section 27 of the Financial Advisors Act (Chapter 110) of Singapore ("FAA"))

BBVA, BBVA Bancomer or BBVA Securities are not authorised deposit institutions in accordance with the definition of the Banking Act 1959 nor are they regulated by the Australian Prudential Regulatory Authority (APRA)

GENERAL DISCLAIMER FOR THE EVENT THAT THE READERS HAVE ACCESSED TO THE REPORT THROUGH THE INTERNET

Internet Access

In the event that this document has been accessed via the internet or via any other electronic means which allows its contents to be viewed, the following information should be read carefully:

The information contained in this document should be taken only a general guide on matters that may be of interest. The application and impact of the laws may vary substantially depending on specific circumstances. BBVA does not warrant that this report and/or its contents published on the Internet are appropriate for use in all geographic areas, or that the financial instruments, securities, products or services that can be referenced on it are available or appropriate for sale or use in all jurisdictions or to all investors or counterparties. Recipients of this report acceding to it through the Internet are acceding on their own initiative and are responsible for compliance with local regulations applicable to them.

Changes in regulations and the risks inherent in electronic communications may cause delays, omissions, or inaccuracy in the information contained in this site. Accordingly, the information contained in the site is supplied on the understanding that the authors and editors do not hereby intend to supply any form of consulting, legal, accounting or other advice.

All images and texts are the property of BBVA and may not be downloaded from the Internet, copied, distributed, stored, re-used, re-transmitted, modified or used in any way, except as specified in this document, without the express written consent of BBVA. BBVA reserves all intellectual property rights to the fullest extent of the law.