

Mexico Weekly Flash

Next week...

- **Remittances in September will help in assessing the strength of the US cycle**

The 2.0% y/y growth in the US economy for the third quarter, linked to better-than-expected retail sales figures, industrial output and housing created optimism surrounding the US recovery. Nonetheless, weak investment and lower sales and revenue recently reported by corporations should not be forgotten, especially in the face of their possible link to the so-called Fiscal Cliff. In this sense, an additional sector helping to provide further information on the US cycle is remittances, given their link to employment and flexibility.

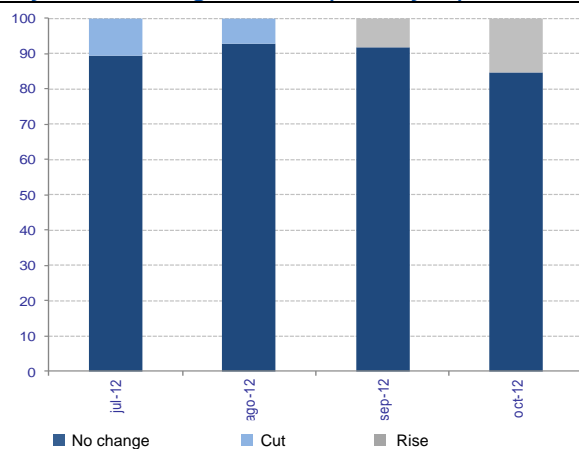
This is very important given the mixed figures on US economic performance and the outlook of a slowdown at the Bank of Mexico which sees a downward bias to inflation. Specifically today, Banxico adopted a more restrictive tone, warning that if inflationary shocks continue and the decline in the inflation curve is not confirmed, a higher rate would be likely. Notwithstanding the downturn in the short-term inflationary risk balance, the central bank stated that the downward risks for both domestic and global economic output increased, meaning medium-term inflationary pressures are declining. In this way, in a scenario of disappearing supply shocks, the monetary pause is likely to continue.

- **Exchange rate: limited effect from the Banxico statement, risk aversion prevails**

Figures on higher unemployment in Spain and lower-than-expected corporate reports in the US prevailed over the positive growth data in the US and led to lower risk appetite. The Banxico statement could have a strengthening effect although it should not be taken as a factor leading to major currency appreciation. This considering that global risk was a heavyweight factor on the variable in recent months.

Chart 1

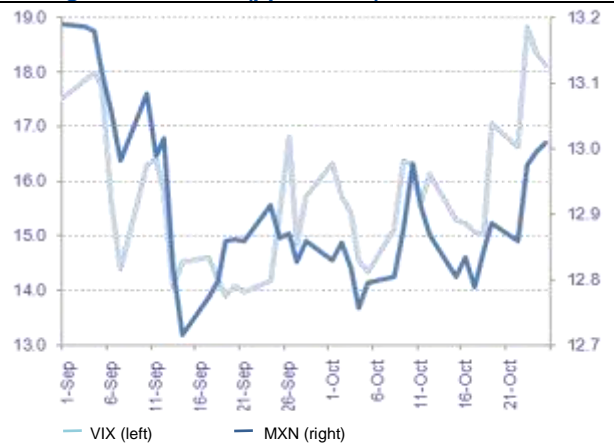
Expectations regarding the next move in monetary policy in the coming 6 months (% analysts)



Source: BBVA Research with data from the Financial Market Analysts' Survey

Chart 2

Exchange rate and VIX (ppd and %)



Source: BBVA Research and Bloomberg

Calendar: Indicators

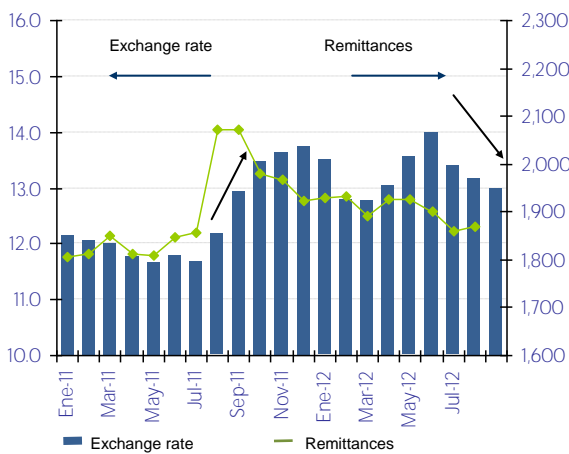
Remittances in September (October 24)

Previous: 1,895.5 md

On November 1, the Bank of Mexico will release figures on remittances received in Mexico for September this year. We expect to see a major contraction in the yearly rate in dollars which could be higher than that seen in August. The reasons behind this are: 1) *A comparative effect* due to the exchange rate (pesos per dollar) in September last year rose by over 6% compared to the month before, a situation which, linked to the positive trend in Mexican migrant employment in the US, led to extraordinary remittance levels that month with annual growth of 21.4%, the highest since 2007. 2) *A stronger exchange rate* in September 2012, recording an over 1% decline compared to the previous month. 3) *Weak Mexican migrant employment*. While preliminary figures from the *Current Population Survey* show that Mexican migrant employment in September in the US could have increased, it is still below levels seen in the first half of the year.

Chart 3

Exchange rate and remittances to Mexico (pesos per dollar and millions of dollars)



Source: BBVA Research with Banxico figures

Note: Remittance figures are seasonally-adjusted using TRAMO-SEATS

Technical Analysis

IPC



The weekly adjustment in the IPC took it below the 10-day rolling average. With the RSI barely at 55pts, we can expect the adjustment to continue toward the 41,500/41,400pts range where the last resistance in the IPC sits, as well as the 30-day rolling average. In this way, we believe the market will be able to respect this floor and move upward again; however, it should be stated that a downward break through 41,400pts would point to a move beyond simple profit-taking and open the door to a return to the 40,500pts zone, or even 40,000pts where the upward trend base has remained since October last year.

Previous Rec. (10/22/12): We recommend maintaining a low investment level, cashing-in with issuers having seen good performance in recent weeks and waiting for the market to return to testing supports.

Source: BBVA, Bancomer, Bloomberg

MXN



The dollar remained trading near the MXN13.00 resistance over the entire week. We believe it may see an upward break to this level and seek out MXN13.30, moving up the 30 cent accumulation between MXN12.70 and MXN13.00 it maintained in previous weeks.

Previous Rec. (10/22/12). It has traded between MXN12.70 and MXN13.00 over the last month. If it breaks through the high part of this range, it could move toward MXN13.30.

Source: BBVA, Bancomer, Bloomberg

3Y M BOND



3Y M BOND (yield): The bond bounced toward the 5% zone, slightly above the previous high. With the RSI at 77pts and a major opening-up between the bond and its 30-day rolling average, we believe the upswing could halt at this level and return to 4.85%.

Previous Rec. (10/22/12). With the positive upward cross through the 10- and 30-day averages, we could expect a return to the 4.9%-5% range. Floor at 4.75%.

Source: BBVA, Bancomer, Bloomberg

10Y M BOND



10Y M BOND (yield): The bond saw an upward week, hitting 5.5%. We still see some upward move in this bond, seeking out the 5.6% level.

Previous Rec. (10/15/12). Only if it hits above 5.4% could we consider a trend change.

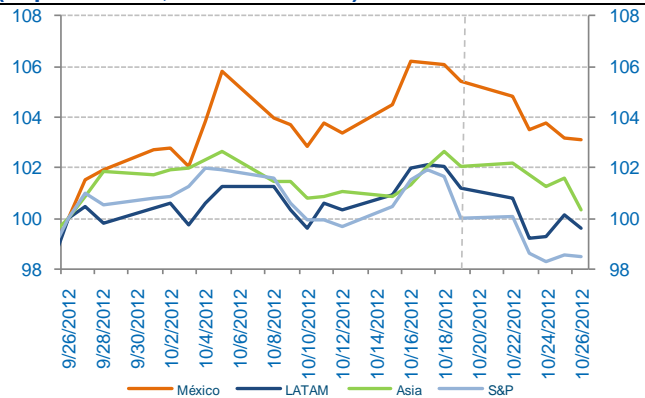
Source: BBVA, Bancomer, Bloomberg

Markets

- Figures on lower growth and higher unemployment in Spain, in addition to lower-than-expected corporate reports in the US, led to declines on stock markets and a lower peso.

Chart 7

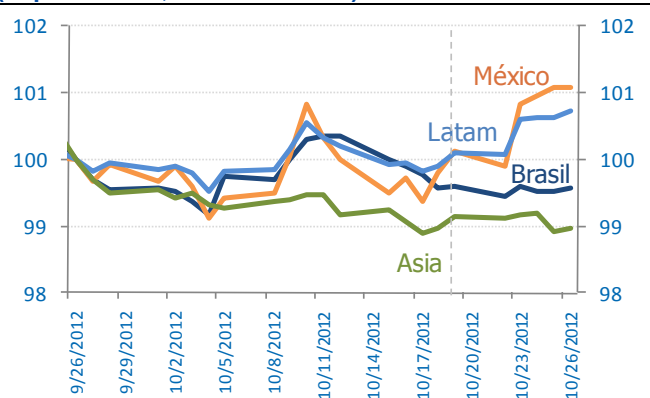
Stock Markets: MSCI Indices (September 26, 2012 index=100)



Source: Bloomberg & BBVA Research

Chart 8

Foreign exchange: dollar exchange rates (September 26, 2012 index=100)

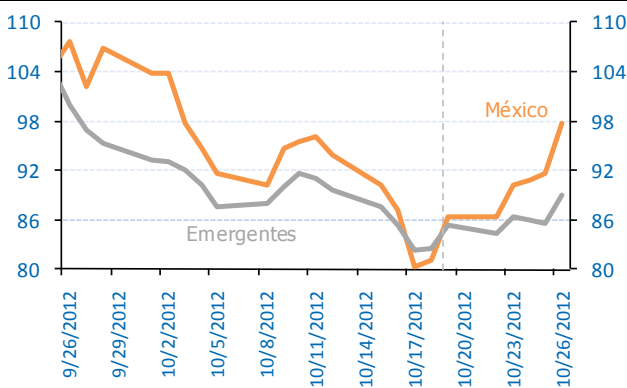


Source: Bloomberg and BBVA Research Note: LATAM includes Argentina, Brazil, Chile, Colombia and Peru. Asia includes the Philippines, South Korea, Taiwan, Singapore, Indonesia and Thailand. Non-weighted averages

- Higher global risk aversion after it was announced that the Spanish economy contracted for the fifth consecutive quarter and the unemployment rate continues to increase

Chart 9

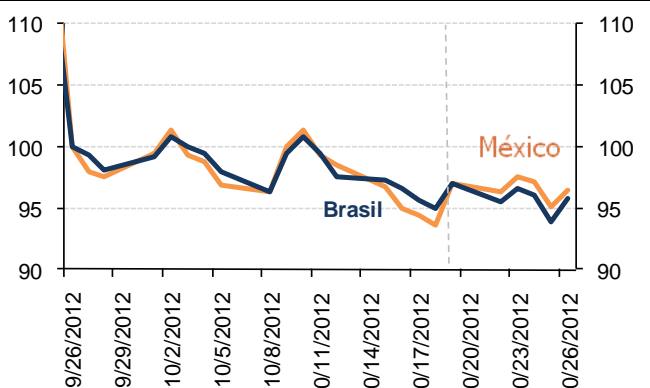
Risk: EMBI+ (September 26, 2012 index=100)



Source: Bloomberg & BBVA Research

Chart 10

Risk: 5-year CDS (September 26, 2012 index=100)

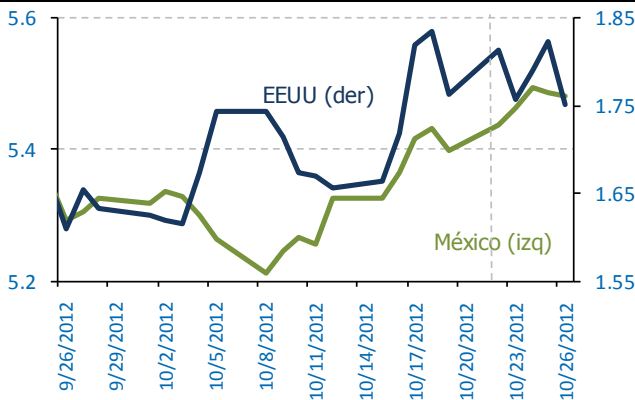


Source: Bloomberg & BBVA Research

- Decline in US interest rates due to renewed concern surrounding the debt crisis in Europe. Rates in Mexico increased.

Chart 11

10-year interest rates*, last month



Source: Bloomberg & BBVA Research

Chart 12

Carry-trade Mexico index (%)

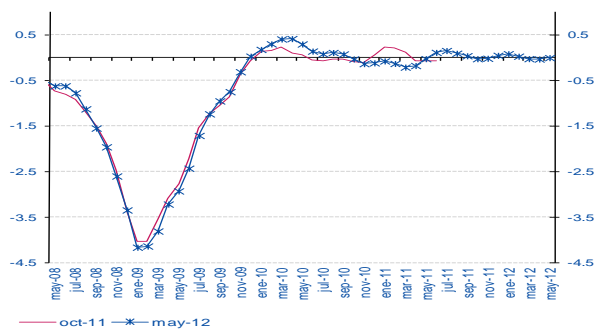


Source: BBVA Research with data from Bloomberg

Activity, inflation, monetary conditions

- Output holds positive albeit moderate performance, situation indicators point to 3Q12 with quarterly rates above 0.5%.

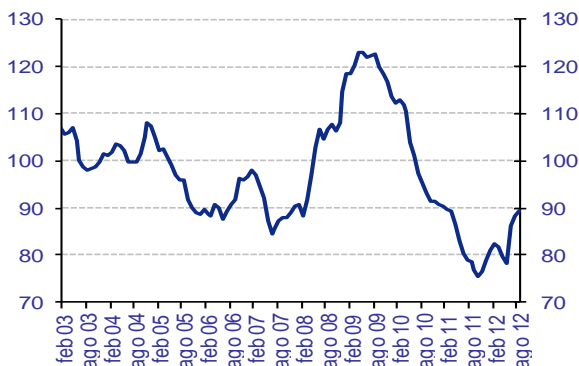
Chart 13
BBVA Research Synthetic Activity Indicator for the Mexican economy



Source: BBVA Research with data from INEGI, AMIA and BEA. Weighted sum of 21 different indicators of activity, expenditure and expectation, based on trend series.

- Recently we have seen upward surprises in inflation and output.

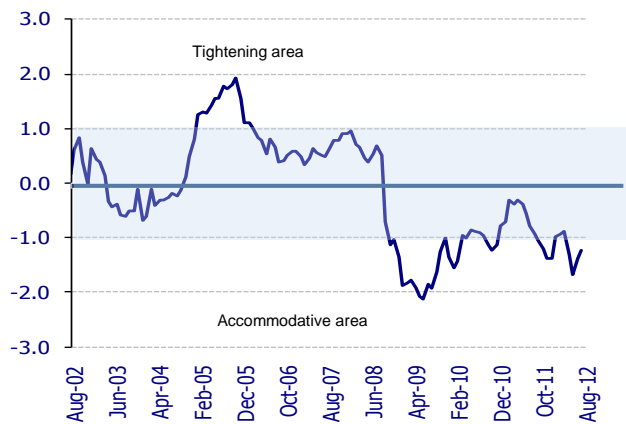
Chart 15
Inflation Surprise Index (July 2002=100)



Source: BBVA Research with data from Banxico from the monthly surveys on the expectations of economic specialists in the private sector.

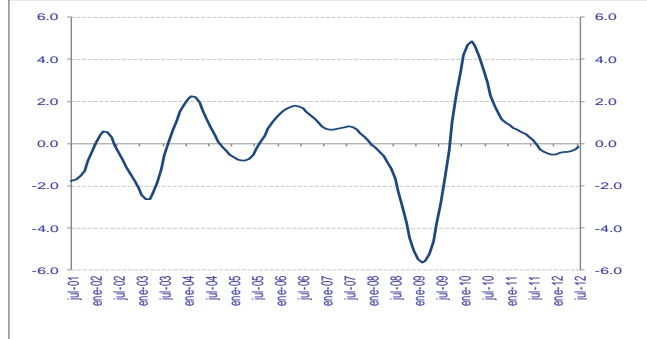
- Monetary conditions slightly reduced their looseness after currency appreciation.

Chart 17
Monetary Conditions Index



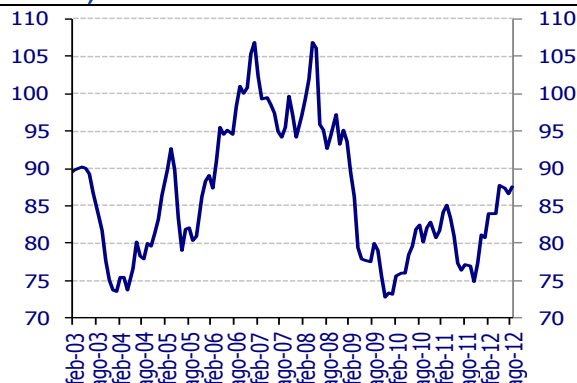
Source: BBVA Research

Chart 14
Advance Indicator of Activity, trend (% change y/y)



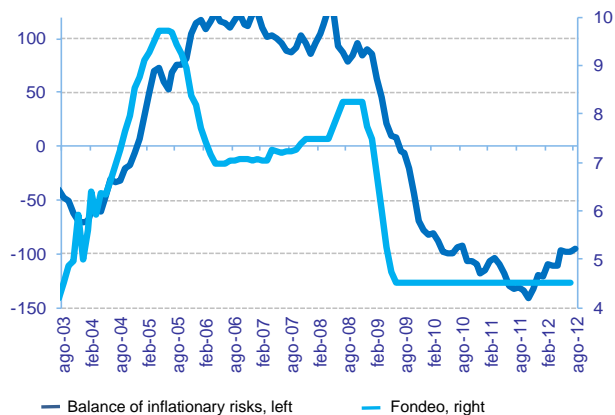
Source: INEGI

Chart 16
Activity Surprise Index (2002=100)



Source: BBVA Research with data from Bloomberg. Difference between recorded data and the Bloomberg consensus for seven activity variables in Mexico. Standardized index. Rises (falls): positive (negative) surprises.

Chart 18
Balance of Inflationary Risks* and Lending Rate (standardized and %; monthly averages)



Source: BBVA Research. * Standardized and weighted index (of inflation and economic growth) based on economic indicators of economic activity and inflation. A rise in the IBR signals greater weight of inflationary risks over those of growth and, therefore, more likelihood of monetary restriction

Claudia Ceja
claudia.ceja@bbva.bancomer.com

Juan Luis Ordaz
juan.ordaz@bbva.com

Alejandro Fuentes Pérez
a.fuentes@bbva.bancomer.com

Octavio Gutiérrez Engelmán
o.gutierrez3@bbva.bancomer.com

Ociel Hernández
o.hernandez@bbva.bancomer.com

Arnoldo López
arnoldo.lopez@bbva.com

Iván Martínez
ivan.martinez.2@bbva.com

Rodrigo Ortega
r.ortega@bbva.bancomer.com

Cecilia Posadas
c.posadas@bbva.com



| Av. Universidad 1200, Col. Xoco, Mexico 03339 D.F. | researchmexico@bbva.bancomer.com | www.bbva.com/research

IMPORTANT DISCLOSURES

The BBVA Group companies identified by the research analysts' names included on page 7 of this report have participated in or contributed to its preparation, including the information, opinions, estimates, forecasts and recommendations therein.

For recipients in the European Union, this document is distributed by Banco Bilbao Vizcaya Argentaria, S.A. (hereinafter called "BBVA"). BBVA is a bank supervised by the Bank of Spain and by Spain's Stock Exchange Commission (CNMV), registered with the Bank of Spain with number 0182.

For recipients in Mexico, this document is distributed by BBVA Bancomer, S.A. Institución de Banca Múltiple, Grupo Financiero BBVA Bancomer (hereinafter called "BBVA Bancomer"). BBVA Bancomer is a bank supervised by the Comisión Nacional Bancaria y de Valores de México.

For recipients in USA, this document is being distributed by BBVA Securities Inc. (hereinafter called "BBVA Securities"), a subsidiary of Banco Bilbao Vizcaya Argentaria, S.A. ("BBVA") registered with and supervised by the U.S. Securities and Exchange Commission and a member of the Financial Industry Regulatory Authority ("FINRA") and the Securities Investor Protection Corporation. U.S. persons wishing to execute any transactions should do so only by contacting a representative of BBVA Securities in the U.S. Unless local regulations provide otherwise, non-U.S. persons should contact and execute transactions through a BBVA branch or affiliate in their home jurisdiction.

BBVA and BBVA Group companies or affiliates (art. 42 of the Royal Decree of 22 August 1885 Code of Commerce), are subject to the BBVA Group Policy on Conduct for Security Market Operations which establishes common standards for activity in these entities' markets, but also specifically for analysis and analysts. This BBVA policy is available for reference at the following web site: www.bbva.com.

Analysts residing outside the U.S. who have contributed to this report are not registered with or qualified as research analysts by FINRA or the New York Stock Exchange and may not be considered "associated persons" of BBVA Securities (as such term is construed by the rules of FINRA). As such, they are not subject to NASD Rule 2711 restrictions on communications with subject companies, public appearances and trading of securities held in research analysts' accounts.

BBVA is subject to a Code of Conduct for Security Market Operations, which details the standards of the above-mentioned overall policy for the EU. Among other regulations, it includes rules to prevent and avoid conflicts of interests with the ratings given, including information barriers. This Code of Conduct for Security Market Operations is available for reference at the following web site: [www.bbva.com / Corporate Governance](http://www.bbva.com/CorporateGovernance).

BBVA Bancomer is subject to a Code of Conduct and to Internal Standards of Conduct for Security Market Operations, which details the standards of the above-mentioned overall policy for Mexico. Among other regulations, it includes rules to prevent and avoid conflicts of interests with the ratings given, including information barriers. These Code and the Internal Standards is available for reference at the following web site: www.bancomer.com/GrupoBBVABancomer/Conocenos.

BBVA Securities is subject to a Capital Markets Code of Conduct, which details the standards of the above-mentioned overall policy for USA. Among other regulations, it includes rules to prevent and avoid conflicts of interests with the ratings given, including information barriers.

EXCLUSIVELY FOR RECIPIENTS RESIDENT IN MEXICO

In the past twelve months, BBVA Bancomer has granted banking credits to the following companies covered in this report: **ALFA, AXTEL, CONSTRUCCION Y SERVICIOS INTEGRALES SIGMA, CORPORACION GEO, DAIMLER MEXICO, FACILEASING, GENOMMA LAB INTERNACIONAL, GRUPO CARSO, GRUPO CASA SABA, GRUPO CEMENTOS DE CHIHUAHUA, GRUPO COMERCIAL CHEDRAUI, GRUPO PALACIO DE HIERRO, IMPULSORA DEL DESARROLLO Y EL EMPLEO EN AMERICA LATINA, INDUSTRIAS BACHOCO, INMOBILIARIA RUBA, PEMEX CORPORATIVO, TIENDAS CHEDRAUI, URBI DESARROLLOS URBANOS, VOLKSWAGEN LEASING.**

In the past twelve months, BBVA Bancomer has granted *Representación Común* services to the following companies covered in this report: **N/A**

BBVA or one or more of its affiliates makes a market/provides liquidity in the securities of the following companies covered in this report: MexDer Contrato de Futuros (Dólar de Estados Unidos de América (DEUA), TIIE de 28 días (TE28), Swap de TIIE, CETES de 91 días (CE91)), Bonos M, Bonos M3, Bonos M10, Índice de Precios y Cotizaciones de la BMV (IPC), Contrato de Opciones (IPC, Acclones América Móvil, Cemex, CPO, Femsa UBD, Gcarso A1, Telmex L), Udibonos.

As far as it is known, a Director, Executive Manager or Manager reporting directly to the BBVA Bancomer General Manager has the same position in the following companies that may be covered in this report: Alfa, Asea, America Movil, AMX, Asur, CMR, Coca-Cola Femsa, Consorcio Hogar, Dine, El Puerto de Liverpool, Fomento Economico Mexicano, Gruma, Grupo Aeroportuario del Pacifico, Grupo Aeroportuario del Sureste, Grupo Bimbo, Grupo Carso, Grupo Financiero Inbursa, Grupo Kuo, Grupo Maseca, Grupo Modelo, Grupo Posadas, Grupo Televisa, Industrias Peñoles, Invex Controladora, KOF, México, Grupo Aeroportuario del Centro Norte, Sanborns Hermanos, Sears Roebuck de México, Telecom, Telefonos de México, Tenaris, Urbi Desarrollos Urbanos, Vitro.

BBVA Bancomer, and, as applicable, its affiliates within BBVA Bancomer Financial Group, may hold from time to time investments in the securities or derivatives financial instruments with underlying securities covered in this report, which represents 10% or more of its securities or investment portfolio, or 10% or more of the issue or underlying of the securities covered.

DISCLAIMER

This document and the information, opinions, estimates, forecasts and recommendations expressed herein have been prepared to provide BBVA Group's customers with general information and are current as of the date hereof and subject to changes without prior notice. Neither BBVA nor any of its affiliates is responsible for giving notice of such changes or for updating the contents hereof.

This document and its contents do not constitute an offer, invitation or solicitation to purchase or subscribe to any securities or other instruments, to undertake or divest investments, or to participate in any trading strategy. Neither shall this document nor its contents form the basis of any contract, commitment or decision of any kind.

Investors who have access to this document should be aware that the securities, instruments or investments to which it refers may not be appropriate for them due to their specific investment goals, financial positions or risk profiles, as these have not been taken into account to prepare this report. Therefore, investors should make their own investment decisions considering the said circumstances and obtaining such specialized advice as may be necessary. Other than the disclosures relating to BBVA Group, the contents of this document are based upon information available to the public that has been obtained from sources considered to be reliable. However, such information has not been independently verified by BBVA or any of its affiliates and therefore no warranty, either express or implicit, is given regarding its accuracy, integrity or correctness. To the extent permitted by law, **BBVA and its affiliates accept no liability of any type for any direct or indirect losses or damages arising from the use of this document or its contents. Investors should note that the past performance of securities or instruments or the historical results of investments do not guarantee future performance.**

The market prices of securities or instruments or the results of investments could fluctuate against the interests of investors. Investors should be aware that they could even face a loss of their investment. Transactions in futures, derivatives, options on securities or high-yield securities can involve high risks and are not appropriate for every investor. Indeed, in the case of some investments, the potential losses may exceed the amount of initial investment and, in such circumstances; investors may be required to pay more money to support those losses. Thus, before undertaking any transaction with these instruments, investors should be aware of their operation, as well as the rights, liabilities and risks implied by the same and the underlying securities. Investors should also be aware that secondary markets for the said instruments may not exist.

BBVA or any of its affiliates' salespeople, traders, and other professionals may provide oral or written market commentary or trading strategies to its clients that reflect opinions that are contrary to the opinions expressed herein. Furthermore, BBVA or any of its affiliates' proprietary trading and investing businesses may make investment decisions that are inconsistent with the recommendations expressed herein. No part of this document may be (i) copied, photocopied or duplicated by any other form or means (ii) redistributed or (iii) quoted, without the prior written consent of BBVA. No part of this report may be copied, conveyed, distributed or furnished to any person or entity in any country (or persons or entities in the same) in which its distribution is prohibited by law. More specifically, this document is in no way intended for, or to be distributed or used by an entity or person resident or located in a jurisdiction in which the said distribution, publication, use of or access to the document contravenes the law which requires BBVA or any of its affiliates to obtain a licence or be registered. Failure to comply with these restrictions may breach the laws of the relevant jurisdiction.

The remuneration system concerning the analysts responsible for the preparation of this report is based on multiple criteria, including the revenues obtained by BBVA and, indirectly, the results of BBVA Group in the fiscal year, which, in turn, include the results generated by the investment banking business; nevertheless, they do not receive any remuneration based on revenues from any specific transaction in investment banking.

In the United Kingdom, this document is directed only at persons who (i) have professional experience in matters relating to investments falling within article 19(5) of the financial services and markets act 2000 (financial promotion) order 2005 (as amended, the "financial promotion order"), (ii) are persons falling within article 49(2) (a) to (d) ("high net worth companies, unincorporated associations, etc.") of the financial promotion order, or (iii) are persons to whom an invitation or inducement to engage in investment activity (within the meaning of section 21 of the financial services and markets act 2000) may otherwise lawfully be communicated (all such persons together being referred to as "relevant persons"). This document is directed only at relevant persons and must not be acted on or relied on by persons who are not relevant persons. Any investment or investment activity to which this document relates is available only to relevant persons and will be engaged in only with relevant persons.

BBVA Hong Kong Branch (CE number AFR194) is regulated by the Hong Kong Monetary Authority and the Securities and Futures Commission of Hong Kong.

This document is distributed in Singapore by the BBVA's office in this country for general information purposes and it is generally accessible. In this respect, this document does not take into account the specific investment goals, the financial situation or the need of any particular person and it is exempted from Regulation 34 of the Financial Advisors Regulation ("FAR") (as required in Section 27 of the Financial Advisors Act (Chapter 110) of Singapore ("FAA"))

BBVA, BBVA Bancomer or BBVA Securities are not authorised deposit institutions in accordance with the definition of the Banking Act 1959 nor are they regulated by the Australian Prudential Regulatory Authority (APRA)

GENERAL DISCLAIMER FOR THE EVENT THAT THE READERS HAVE ACCESSED TO THE REPORT THROUGH THE INTERNET

Internet Access

In the event that this document has been accessed via the internet or via any other electronic means which allows its contents to be viewed, the following information should be read carefully:

The information contained in this document should be taken only a general guide on matters that may be of interest. The application and impact of the laws may vary substantially depending on specific circumstances. BBVA does not warrant that this report and/or its contents published on the Internet are appropriate for use in all geographic areas, or that the financial instruments, securities, products or services that can be referenced on it are available or appropriate for sale or use in all jurisdictions or to all investors or counterparties. Recipients of this report acceding to it through the Internet are acceding on their own initiative and are responsible for compliance with local regulations applicable to them.

Changes in regulations and the risks inherent in electronic communications may cause delays, omissions, or inaccuracy in the information contained in this site. Accordingly, the information contained in the site is supplied on the understanding that the authors and editors do not hereby intend to supply any form of consulting, legal, accounting or other advice.

All images and texts are the property of BBVA and may not be downloaded from the Internet, copied, distributed, stored, re-used, re-transmitted, modified or used in any way, except as specified in this document, without the express written consent of BBVA. BBVA reserves all intellectual property rights to the fullest extent of the law.